



ATTACHMENT I – General Qualifications
ANNUAL REQUEST FOR QUALIFICATIONS AND EXPERIENCE NO:
ADSP015-00004729

STATE PROCUREMENT OFFICE
Department of Administration
100 North 15th Avenue, Suite 201
Phoenix, Arizona 85007

(If a firm has branch offices, complete for each specific branch office seeking work.)

1. Annual Request for Qualifications

a. FIRM (OR BRANCH OFFICE) NAME:	Bowman Consulting Group, Ltd.
b. FIRM (OR BRANCH OFFICE) STREET:	1295 W. Washington Street, Suite 108
c. FIRM (OR BRANCH OFFICE) CITY:	Tempe
d. FIRM (OR BRANCH OFFICE) STATE:	Arizona
e. FIRM (OR BRANCH OFFICE) ZIP CODE:	85281
f. YEAR ESTABLISHED:	1995
(g1). OWNERSHIP - TYPE:	S Corporation
(g2) OWNERSHIP - SMALL BUSINESS STATUS:	
h. POINT OF CONTACT NAME AND TITLE:	Troy Peterson, Principal
i. POINT OF CONTACT TELEPHONE NUMBER:	(480) 559-8355
j. POINT OF CONTACT E-MAIL ADDRESS:	tpeterson@bowmancg.com
k. NAME OF FIRM (If block 1a is a branch office):	Bowman Consulting Group, Ltd.



ATTACHMENT I – General Qualifications

**ANNUAL REQUEST FOR QUALIFICATIONS AND EXPERIENCE NO:
ADSP015-00004729**

**STATE PROCUREMENT OFFICE
Department of Administration
100 North 15th Avenue, Suite 201
Phoenix, Arizona 85007**

2. EMPLOYEES BY DISCIPLINE

a. Discipline Title	b. Function: Primary (P) or Secondary (S)	c. No. of Employees - Firm	d. No. of Employees - Branch
CADD Technician	P	23	15
Civil Engineer	P	14	7
Mining Engineer	P	1	1
Project Manager	P	16	7
Sanitary Engineer	P	1	1
Water Resources Engineer	P	4	2
Construction Manager	P	3	1
Hydrographic Surveyor	P	1	1
Total		63	35



ATTACHMENT I – General Qualifications

ANNUAL REQUEST FOR QUALIFICATIONS AND EXPERIENCE NO:
ADSP015-00004729

STATE PROCUREMENT OFFICE
Department of Administration
100 North 15th Avenue, Suite 201
Phoenix, Arizona 85007

3. PROFILE OF FIRM'S EXPERIENCE AND ANNUAL AVERAGE REVENUE FOR LAST YEAR

a. Approximate No. of Projects	b. Experience	c. Revenue Index Number (see below)
95	Housing (Residential, Multi-Family; Apartments; Condominiums)	7
7	Commercial Building (Low Rise); Shopping Centers	4
20	Codes; Standards; Ordinances	1
4	Highways; Streets; Airfield Paving; Parking Lots	4
6	Educational Facilities; Classrooms	3
12	Zoning; Land Use Studies	1
12	Construction Surveying	2
5	Cost Estimating; Cost Engineering & Analysis	1
3	Recreation Facilities (Parks)	1
150	Land Surveying	3
28	Mining & Mineralogy	6
2	Office Buildings; Industrial Parks	2
1	Rivers, Canals; Waterways; Flood Control	4
50	Infrastructure	6
60	Surveying; Platting; Mapping; Flood Plain Studies	2

PROFESSIONAL SERVICES REVENUE INDEX NUMBER

- | | |
|-----------------------------------------|-------------------------------------------|
| 1. Less than \$100,000 | 6. \$2 million to less than \$5 million |
| 2. \$100,000 to less than \$250,000 | 7. \$5 million to less than \$10 million |
| 3. \$250,000 to less than \$500,000 | 8. \$10 million to less than \$25 million |
| 4. \$500,000 to less than \$1 million | 9. \$25 million to less than \$50 million |
| 5. \$1 million to less than \$2 million | 10. \$50 million or greater |

4. Resumes of Key Personnel Proposed for this Contract (Complete one Section 4 for each key person.)

a. NAME Troy Peterson, PE	b. ROLE IN THIS CONTRACT Point of Contact Project Principal	c. YEARS EXPERIENCE	
		1. TOTAL 23	2. WITH CURRENT FIRM 4
d. LOCATION (City and State) Bowman Consulting, 1295 W. Washington St., Suite 108, Tempe, AZ			
e. EDUCATION (DEGREE AND SPECIALIZATION) MBA, Business Admin from Arizona State University. B.S. Civil Engineering from Utah State		f. PROFESSIONAL TRAINING - REGISTRATIONS AZPE #32334	
g. OTHER PROFESSIONAL QUALIFICATIONS (Organizations, Awards, etc.) American Society of Civil Engineers; Board Member of the City of Mesa Transportation Advisory Board; East Valley Partnership Transportation Committee and East Valley Partnership Economic Development Committee			

H. RELEVANT PROJECTS

1.	(1) TITLE AND LOCATION (City and State) City of Mesa, 6th Drive Water, Sewer and Gas Replacement Mesa, AZ	(2) YEAR COMPLETED	
		Professional Services 2010	Construction (if applicable) 2011
	(3) BRIEF DESCRIPTION (Brief scope, size, cost, etc.) AND SPECIFIC ROLE Provided QA/QC for civil engineering design for water, sewer and gas main replacement for the City of Mesa. The project consisted of approximately 1,300 linear feet of 8-inch sewer and 2.5-inch gas line in 6th Drive between Country Club Drive and Date. This project was challenging due to existing below standard slope. Provided sewer analysis to determine the most desirable sewer solution/ modification to improve flow characteristics.	<input checked="" type="checkbox"/>	Check if project performed with current firm
2.	(1) TITLE AND LOCATION (City and State) City of Phoenix Sanitary Sewer Relief and Replacement Program ; Phoenix, AZ	(2) YEAR COMPLETED	
		Professional Services 2010	Construction (if applicable) 2013
	(3) BRIEF DESCRIPTION (Brief scope, size, cost, etc.) AND SPECIFIC ROLE Provided QA/QC for design services under the City's Sanitary Sewer Relief Program for Projects 2 and 6. Work under the contract included design and preparation of construction drawings, to provide additional capacity at locations where existing sewers are projected to be at or near full capacity for 2010 peak flows. Our team provided design services to parallel sewers, larger replacement sewers, or redirection of flows to nearby existing sewers with excess capacity, along with required base maps, utility coordination, and cost estimating. Sizes ranged from 8-24 inches, at a few hundred feet to several thousand feet. The program was vital to sustaining the operational integrity of the City's sewer collection system.	<input checked="" type="checkbox"/>	Check if project performed with current firm
3.	(1) TITLE AND LOCATION (City and State) Nogales Border Indoor Firing Range Nogales, AZ	(2) YEAR COMPLETED	
		Professional Services 2011	Construction (if applicable) 2013
	(3) BRIEF DESCRIPTION (Brief scope, size, cost, etc.) AND SPECIFIC ROLE Project Manager for surveying, civil engineering design, construction staking, and construction administration services for a new indoor firing range at the U.S. Border Patrol station in Nogales, Arizona. Bowman was contracted with ABBA Electric through the U.S. Army Corps of Engineers. The installation of the new modular indoor firing range included re-grading of the site, a restroom building with water and sewer line extensions, and an expansion and repaving of the existing parking lot. The new indoor firing range will allow the Border Patrol officers to complete training programs using virtual reality applications in a weather controlled environment.	<input checked="" type="checkbox"/>	Check if project performed with current firm
4.	(1) TITLE AND LOCATION (City and State) FedEx Distribution Center Chandler, AZ	(2) YEAR COMPLETED	
		Professional Services 2014	Construction (if applicable) 2014
	(3) BRIEF DESCRIPTION (Brief scope, size, cost, etc.) AND SPECIFIC ROLE Serving as the Project Manager for the preliminary phase of the project. The project site, located on Queen Creek Road just east of Gilbert Road in Chandler, Arizona, consists of approximately 48 acres with proposed buildings totaling over 300,000 square feet. The scope of services include due diligence studies for zoning verification, utility availability, required roadway improvements, and cost estimates, preparation of preliminary site, grading and utility plans, and coordination of proposed improvements with city staff , owner, adjacent developers and other design professionals.	<input checked="" type="checkbox"/>	Check if project performed with current firm
5.	(1) TITLE AND LOCATION (City and State) Bumstead Office Building Unincorporated Maricopa County, AZ	(2) YEAR COMPLETED	
		Professional Services 2013	Construction (if applicable) 2013
	(3) BRIEF DESCRIPTION (Brief scope, size, cost, etc.) AND SPECIFIC ROLE Served as the project manager providing surveying and engineering design services for a gas storage maintenance building, including water system analysis and septic system design.	<input checked="" type="checkbox"/>	Check if project performed with current firm

4. Resumes of Key Personnel Proposed for this Contract (Complete one Section 4 for each key person.)

a. NAME Sherri Koshiol, PE	b. ROLE IN THIS CONTRACT Project Manager Project Engineer	c. YEARS EXPERIENCE	
		1. TOTAL 19	2. WITH CURRENT FIRM 4
d. LOCATION (City and State) Bowman Consulting, 1295 W. Washington St., Suite 108, Tempe, AZ			
e. EDUCATION (DEGREE AND SPECIALIZATION) B.S. Civil Engineering from North Dakota State University B.A. Business Management from Utah State University		f. PROFESSIONAL TRAINING - REGISTRATIONS AZPE #32334	
g. OTHER PROFESSIONAL QUALIFICATIONS (Organizations, Awards, etc.) National Society of Professional Engineers, Arizona Association of Economic Development, International Council of Shopping Centers, Leadership in Engineering Administration program (LEAP), American Council of Engineering, ASCE, Pinal Partnership, Desert Youth Hockey Association Board of Directors			

H. RELEVANT PROJECTS

1.	(1) TITLE AND LOCATION (City and State) Layton Lakes Master Planned Community Chandler, AZ	(2) YEAR COMPLETED
		Professional Services 2011
	(3) BRIEF DESCRIPTION (Brief scope, size, cost, etc.) AND SPECIFIC ROLE Provided civil design and platting services for this 350-acre, 550-lot master planned lake community and responsible for the evaluation of offsite drainage and a floodplain area affecting the site. Prepared and processed of a CLOMR/LOMR with FEMA to address the floodplain issues. Additional project coordination efforts include extensive interaction with the City of Chandler, Roosevelt Water Conservation District, Chandler Unified School District, CIPO Design Consultant, Maricopa County Environmental Services Department (MCESD), and surrounding developments. Design responsibilities include roadway, utility backbone and infrastructure, along with onsite grading of the lake and basin system use for floodplain, storm water, and amenities.	<input checked="" type="checkbox"/> Check if project performed with current firm
2.	(1) TITLE AND LOCATION (City and State) Ft. Huachuca Site Papa Training Facility Sierra Vista, AZ	(2) YEAR COMPLETED
		Professional Services 2011
	(3) BRIEF DESCRIPTION (Brief scope, size, cost, etc.) AND SPECIFIC ROLE Project Manager for the master drainage analysis for two washes that cross through a remote training center site near Sierra Vista. This included a HEC analysis and design of channel and pipe cross-sections along with rip rap protection to convey the projected flows efficiently through this project site.	<input checked="" type="checkbox"/> Check if project performed with current firm
3.	(1) TITLE AND LOCATION (City and State) Arterial Streets Reconstruction Group 4 (Stapley & Signal Butte), Water & Gas Line Design; Mesa, AZ	(2) YEAR COMPLETED
		Professional Services 2012
	(3) BRIEF DESCRIPTION (Brief scope, size, cost, etc.) AND SPECIFIC ROLE Served as the project manager providing civil design services including existing utility as-built verification and base map preparation for a City Arterial Street Reconstruction Program. This project started in January 2010 and was put on hold in August 2010 due to lack of funding and restarted in 2014. Services included reconstruction of one mile of Stapley Drive between Brown Road and University Drive and Signal Butte from Southern to Wier. Design services included ADA analysis for the reconstruction of southwest ramps and driveways, pavement reconstruction, concrete repairs, sidewalk ramp modifications, sidewalk additions, traffic signal indicator modifications, signing and striping and cost estimates. Design also included a 2-inch gas main and 12-inch water line along Stapley Road and subsurface utility investigation. Provided City of Mesa an Engineer's Opinion of Probable Construction Cost based on the 90% plans, bidding assistance, and construction administration.	<input checked="" type="checkbox"/> Check if project performed with current firm
4.	(1) TITLE AND LOCATION (City and State) City of Phoenix Hydrant Install Design, City of Phoenix, AZ	(2) YEAR COMPLETED
		Professional Services 2012
	(3) BRIEF DESCRIPTION (Brief scope, size, cost, etc.) AND SPECIFIC ROLE Bowman provided topographic mapping and engineered plans for the construction of necessary water fire hydrant services for various streets. This project includes six quarter sections of land where hydrants will be evaluated to determine if they meet the current standards within the City of Phoenix and then replace, modify or add fire hydrants and/or waterline if necessary. This project involved extensive public outreach with residents and local businesses through door hangers and mailers.	<input checked="" type="checkbox"/> Check if project performed with current firm
5.	(1) TITLE AND LOCATION (City and State) Power Road 4" HP Gas Main, City of Mesa, AZ	(2) YEAR COMPLETED
		Professional Services 2011
	(3) BRIEF DESCRIPTION (Brief scope, size, cost, etc.) AND SPECIFIC ROLE Served as project manager providing civil engineering routing and design of approximately 6,500 linear feet of 4-inch high pressure steel gas main for the City of Mesa. The Power Road corridor was fairly congested with existing water, sewer, gas, fiber-optic and electric lines. Extensive efforts were expended to identify and plan the existing utilities both horizontally and vertically. Worked closely with the City's utility locating consultant to verify the vertical locations of the utilities that fell within the selected gas main alignment. The identification of all utilities large or small was key.	<input checked="" type="checkbox"/> Check if project performed with current firm

4. Resumes of Key Personnel Proposed for this Contract (Complete one Section 4 for each key person.)

a. NAME Shelby Duplessis, PE, LEED AP	b. ROLE IN THIS CONTRACT Project Engineer	c. YEARS EXPERIENCE	
		1. TOTAL 18	2. WITH CURRENT FIRM 4
d. LOCATION (City and State) Bowman Consulting, 1295 W. Washington St., Suite 108, Tempe, AZ			
e. EDUCATION (DEGREE AND SPECIALIZATION) B.S. in Civil Engineering from Arizona State University		f. PROFESSIONAL TRAINING - REGISTRATIONS AZ PE# 55030 LEED AP #10299966	
g. OTHER PROFESSIONAL QUALIFICATIONS (Organizations, Awards, etc.) National Society of Professional Engineers, City of Peoria Historic Preservation Commission, City of Peoria Leadership Institute, Leadership in Engineering Administration Program (LEAP), American Council of Engineering Companies of Arizona			

H. RELEVANT PROJECTS

1.	(1) TITLE AND LOCATION (City and State) City of Phoenix Hydrant Install Design Phoenix, AZ	(2) YEAR COMPLETED
		Professional Services 2012
	(3) BRIEF DESCRIPTION (Brief scope, size, cost, etc.) AND SPECIFIC ROLE Provided topographic mapping and engineered plans for the construction of necessary water fire hydrant services for various streets. This project includes six quarter sections of land where hydrants will be evaluated to determine if they meet the current standards within the City of Phoenix and then replace, modify or add fire hydrants and/or waterline if necessary. This project involved extensive public outreach.	
		<input checked="" type="checkbox"/> Check if project performed with current firm
2.	(1) TITLE AND LOCATION (City and State) Desert Botanical Roundabout, Phoenix, AZ	(2) YEAR COMPLETED
		Professional Services 2009
	(3) BRIEF DESCRIPTION (Brief scope, size, cost, etc.) AND SPECIFIC ROLE Provided oversight for the design of the entrance to Desert Botanical Gardens using roundabout design geometry. Services included reconstruction of the current drainage system as well as turning movement review for large wheel based vehicles such as buses. The project team was also responsible for coordinating the complex landscape architecture to enhance the entrance into the gardens. The City considers this a signature project and will implement, where applicable, the same safety and versatility standards for moving traffic throughout the City. Design Budget: \$131,156; Construction Budget Original/Ending: \$997,249.00 / \$745,746.58	
		<input checked="" type="checkbox"/> Check if project performed with current firm
3.	(1) TITLE AND LOCATION (City and State) Greenway Road, Surprise, AZ	(2) YEAR COMPLETED
		Professional Services 2009
	(3) BRIEF DESCRIPTION (Brief scope, size, cost, etc.) AND SPECIFIC ROLE Civil engineering design for approximately one mile of arterial half-street improvements to the north side of Greenway Road from Litchfield to Bullard. The project includes paving plans with medians, left-turn lanes every quarter mile, signaling, striping, landscaping, street lighting, ITS cable, storm drainage, and the design of a 16-inch reclaimed water line and 12-inch sewer line. This project also included extensive coordination with both existing and planned utilities. Design Budget: \$242,490; Construction Budget Original/Ending: \$3M	
		<input checked="" type="checkbox"/> Check if project performed with current firm
4.	(1) TITLE AND LOCATION (City and State) Hillcrest Civil Design Services Avondale, AZ	(2) YEAR COMPLETED
		Professional Services 2010
	(3) BRIEF DESCRIPTION (Brief scope, size, cost, etc.) AND SPECIFIC ROLE Served as the senior project manager providing civil design services for this 390-acre project site, including preliminary plats, final improvement plans, two miles of offsite water lines, two miles of arterial roadway plans with associated striping plans, a park, a school site, and residential uses within 15 parcels. Significant coordination with multiple agencies was necessary due to a 114-inch APS effluent line, a high pressure gas line traversing the site, 230 and 69KV power corridors for APS, three floodplains, existing farmlands and irrigation adjacent to the site, as well as the implications of archeological remediation.	
		<input type="checkbox"/> Check if project performed with current firm
5.	(1) TITLE AND LOCATION (City and State) Sonoran Mountain Ranch Infrastructure Improvements Peoria, AZ	(2) YEAR COMPLETED
		Professional Services 2002
	(3) BRIEF DESCRIPTION (Brief scope, size, cost, etc.) AND SPECIFIC ROLE Served as the project manager providing civil design services on this \$1.5 million project including preparation of water, sewer, and drainage plans for this 700-acre project. Coordinated with the City of Peoria to provide water line infrastructure improvements, including a 180 lf 12-inch DIP water line and 5,400 lf 18-inch DIP water line (tank fill lines) from Jomax Road to the southeast corner of the site in the 75th Avenue alignment; a 2,400 fl 12-inch DIP water line, 1,500 lf 16-inch DIP distribution water line, and 4,900 lf 18-inch DIP transmission water line in East Wing Drive; and 3,800 lf 16-inch DIP, 2,600 12-inch DIP, and 600 8-inch DIP distribution water lines in Sonoran Mountain Ranch Road. Also provided construction-level drawings and specifications for arterial, collector, and local streets inclusive of utilities. Design Budget: \$2,450,000; Construction Budget Original/Ending: \$45M	
		<input type="checkbox"/> Check if project performed with current firm

4. Resumes of Key Personnel Proposed for this Contract (Complete one Section 4 for each key person.)

a. NAME Craig Bolze, PE	b. ROLE IN THIS CONTRACT Project Engineer	c. YEARS EXPERIENCE	
		1. TOTAL 26	2. WITH CURRENT FIRM 1
d. LOCATION (City and State) Bowman Consulting, 1295 W. Washington St., Suite 108, Tempe, AZ			
e. EDUCATION (DEGREE AND SPECIALIZATION) B.S. Civil Engineering from Arizona State University		f. PROFESSIONAL TRAINING - REGISTRATIONS AZPE #30488	
g. OTHER PROFESSIONAL QUALIFICATIONS (Organizations, Awards, etc.) American Society of Civil Engineers, Arizona APWA, American Society of Highway Engineers, Christians in Commerce, President of Phoenix Chapter, Christians in Commerce, Leadership Institute			

H. RELEVANT PROJECTS

1.	(1) TITLE AND LOCATION (City and State) City of Phoenix Plan review of Grading/ Drainage and Street Paving Construction On-Call Services	(2) YEAR COMPLETED	
		Professional Services Present	Construction (if applicable)
	(3) BRIEF DESCRIPTION (Brief scope, size, cost, etc.) AND SPECIFIC ROLE Provided on-call Paving, and Grading and Drainage plan review services to the City of Phoenix. Provided personal and effective project communication and coordination through personal interaction with City of Phoenix review staff at all stages of the review process in order to facilitate timely and cost effective plan review services.		
	<input checked="" type="checkbox"/> Check if project performed with current firm		
2.	(1) TITLE AND LOCATION (City and State) Consulting Civil Engineering Plan Review Services Queen Creek, AZ	(2) YEAR COMPLETED	
		Professional Services 2012	Construction (if applicable)
	(3) BRIEF DESCRIPTION (Brief scope, size, cost, etc.) AND SPECIFIC ROLE On-Call civil engineering plan review services for grading, paving, water and sewer plans, supporting water, sewer and drainage design reports, and final plats for a variety of projects in the Town.		
	<input type="checkbox"/> Check if project performed with current firm		
3.	(1) TITLE AND LOCATION (City and State) Van Buren Street Roadway, Water Transmission Main, Reclaimed Water Transmission Main, Pedestrian Underpass, and Multi-use Path Improvements	(2) YEAR COMPLETED	
		Professional Services	Construction (if applicable)
	(3) BRIEF DESCRIPTION (Brief scope, size, cost, etc.) AND SPECIFIC ROLE Served as project manager and project engineer responsible for paving and drainage roadway improvements for an existing major arterial roadway. This project also provided a new pedestrian underpass and connection to a regional multi-use pathway and trail along the Agua Fria River. Additionally, this project included the design of a well transmission main extension to a regional water storage and treatment facility and a reclaimed water transmission main extension. In order to facilitate these improvements, this project included multi-jurisdictional coordination with the Arizona Department of Transportation, Flood Control District of Maricopa County, and the City of Avondale.		
	<input type="checkbox"/> Check if project performed with current firm		
4.	(1) TITLE AND LOCATION (City and State) 7th Street (from Loop 101 to Deer Valley Road) Major Arterial Roadway, Bridge, and Storm Drain Improvements Design	(2) YEAR COMPLETED	
		Professional Services	Construction (if applicable)
	(3) BRIEF DESCRIPTION (Brief scope, size, cost, etc.) AND SPECIFIC ROLE Served as project manager/ project engineer and senior hydrologist for the 7th Street Paving and Storm Drain Improvements project encompassed paving, storm drain, and water transmission main improvements for a major arterial roadway. The project corridor extended from the Loop 101 on the south to Deer Valley Road on the north. Prior to this project, 7th Street was an unimproved major arterial street with one traffic lane in each direction with intermittent curb, gutter, and sidewalk improvements. No pavement stormwater drainage system existed for the site. However, off-site stormwater was directed to the roadway at three crossings: Cave Creek, Irma Lane Wash, and a regional detention basin in the southern portion of the site. Management of off-site stormwater was a key design consideration for this project and the success of this project was influenced by the design of stormwater runoff drainage systems/structure and conveyance features.		
	<input type="checkbox"/> Check if project performed with current firm		
5.	(1) TITLE AND LOCATION (City and State) City of Phoenix Waterline Replacement and Meter Relocation Phoenix, AZ	(2) YEAR COMPLETED	
		Professional Services 2001	Construction (if applicable) 2002
	(3) BRIEF DESCRIPTION (Brief scope, size, cost, etc.) AND SPECIFIC ROLE The project encompassed engineering survey and design services for approx. 0.5 square miles for the City of Phoenix. This project was undertaken to provide design of new 6-inch and 8-inch water distribution mains for existing neighborhoods in the City. These water mains were needed to replace aging small diameter distribution mains situated in alleys and along rear lot lines. Additionally, this project relocated existing service connections from rear yards and alleyways to street right-of-ways. Existing water lines were abandoned in-place via cutting and plugging key sections of abandoned water lines. This project required extensive right-of-way research and topographic surveys for the project area in order to establish existing project features and right-of-way.		
	<input type="checkbox"/> Check if project performed with current firm		

4. Resumes of Key Personnel Proposed for this Contract (Complete one Section 4 for each key person.)

a. NAME Kent Groh, RLS	b. ROLE IN THIS CONTRACT Survey Department Manager	c. YEARS EXPERIENCE	
		1. TOTAL 24	2. WITH CURRENT FIRM 1
d. LOCATION (City and State) Bowman Consulting, 1295 W. Washington St., Suite 108, Tempe, AZ 85281			
e. EDUCATION (DEGREE AND SPECIALIZATION) B.S. Architecture from Southern Illinois State University		f. PROFESSIONAL TRAINING - REGISTRATIONS AZ RLS# 44808	
g. OTHER PROFESSIONAL QUALIFICATIONS (Organizations, Awards, etc.) Arizona Professional Land Surveyors (APLS), National Society of Professional Surveyors (NSPS), International Right of Way Association (IRWA)			

H. RELEVANT PROJECTS

	(1) TITLE AND LOCATION (City and State)	(2) YEAR COMPLETED	
		Professional Services	Construction (if applicable)
1.	Southwest Gas Survey On-Call Services Maricopa County, AZ	Present	
	(3) BRIEF DESCRIPTION (Brief scope, size, cost, etc.) AND SPECIFIC ROLE Survey Project Principal providing on-call land surveying services in the metro Phoenix area. With approximately 15 projects completed each month, the team has completed over 175 projects to date. Aspects of the contract program include: Right-of-Way determination, boundary and easement documentation for new gas distribution lines, or replacement of aging gas distribution lines. Rigorous schedules often require survey staff to mobilize anywhere in the metro Phoenix within a 12-hours' notice.		
2.	Salt River Project (SRP) On-Call Survey Maricopa County, AZ	2014	
	(3) BRIEF DESCRIPTION (Brief scope, size, cost, etc.) AND SPECIFIC ROLE Project Manager for On-call surveying services for various tasks including right-of-way and easement staking, topographic surveys, legal descriptions and exhibits, and gas main service layouts and staking. The team has refined the coordination process, plan review, conflict identification and resolution which has allowed us to complete tasks such as a 500kv transmission line from PV Nuclear Plant to Casa Grande Topographic Survey, Arizona Cardinals/ University of Phoenix Stadium Staking, Valley Metro Light Rail Relocate, Chicago Cubs Spring Training Facility at Riverview Park staking, and the Loop 202 & University/Broadway Relocate. Bowman is currently providing mobile LiDAR scanning survey services for the SOR mobile mapping pilot project in two sections of Maricopa County. Bowman crews are performing scanning of all arterial roads, alleys, and canals within these two sections.		
3.	Layton Lakes Master Planned Community Chandler, AZ	Present	
	(3) BRIEF DESCRIPTION (Brief scope, size, cost, etc.) AND SPECIFIC ROLE Survey Project Manager for ALTA, Topographic and Boundary survey on the 832-acre Master Planned Community. Also managed the preparation of the Final Plat for the project through the City of Chandler.		
4.	San Tan Shadows Community Unincorporated Pinal County, AZ	Present	
	(3) BRIEF DESCRIPTION (Brief scope, size, cost, etc.) AND SPECIFIC ROLE Survey Project Manager for ALTA, Topographic and Boundary survey for the Community. Also managed the preparation of the Final Plat for the project through Pinal County.		
5.	Windgate Ranch Community for Toll Brothers Scottsdale, AZ	2014	
	(3) BRIEF DESCRIPTION (Brief scope, size, cost, etc.) AND SPECIFIC ROLE Served as Project Manager for residential lot staking, floodplain certification, and elevation certification.		

4. Resumes of Key Personnel Proposed for this Contract (Complete one Section 4 for each key person.)

a. NAME Doug Toney, RLS, CFedS	b. ROLE IN THIS CONTRACT Survey Project Manager	c. YEARS EXPERIENCE	
		1. TOTAL 13	2. WITH CURRENT FIRM 1
d. LOCATION (City and State) Bowman Consulting, 1295 W. Washington St. Suite, 108, Tempe, AZ			
e. EDUCATION (DEGREE AND SPECIALIZATION) B.S. in Mechanical Engineering from Arizona State University		f. PROFESSIONAL TRAINING - REGISTRATIONS AZ RLS# 55030 CFedS # 1634	

g. OTHER PROFESSIONAL QUALIFICATIONS (Organizations, Awards, etc.)
Arizona Professional Land Surveyors (APLS), National Society of Professional Surveyors (NSPS)

H. RELEVANT PROJECTS

1.	(1) TITLE AND LOCATION (City and State) Southwest Gas Survey On-Call Services Maricopa County, AZ	(2) YEAR COMPLETED
		Professional Services Present
	(3) BRIEF DESCRIPTION (Brief scope, size, cost, etc.) AND SPECIFIC ROLE Survey Project Manager providing on-call land surveying services in the metro Phoenix area. With approximately 15 projects completed each month, the team has completed over 175 projects to date. Aspects of the contract program include: Right-of-Way determination, boundary and easement documentation for new gas distribution lines, or replacement of aging gas distribution lines. Rigorous schedules often require survey staff to mobilize anywhere in the metro Phoenix within a 12-hours' notice.	<input checked="" type="checkbox"/> Check if project performed with current firm
2.	(1) TITLE AND LOCATION (City and State) Greenfield Farms Gilbert, AZ	(2) YEAR COMPLETED
		Professional Services 2014
	(3) BRIEF DESCRIPTION (Brief scope, size, cost, etc.) AND SPECIFIC ROLE Serving as the survey project manager for residential construction staking, including rough grade, wet/dry utilities, hardscape, and as-builts.	<input checked="" type="checkbox"/> Check if project performed with current firm
3.	(1) TITLE AND LOCATION (City and State) Bacara Scottsdale, AZ	(2) YEAR COMPLETED
		Professional Services Present
	(3) BRIEF DESCRIPTION (Brief scope, size, cost, etc.) AND SPECIFIC ROLE Serving as the survey project manager for residential lot staking, floodplain certification, setback certification, elevation certification	<input checked="" type="checkbox"/> Check if project performed with current firm
4.	(1) TITLE AND LOCATION (City and State) San Tan Shadows Unincorporated Pinal County, AZ	(2) YEAR COMPLETED
		Professional Services Present
	(3) BRIEF DESCRIPTION (Brief scope, size, cost, etc.) AND SPECIFIC ROLE Survey Assistant Project Manager for ALTA, Topographic and Boundary survey for the Community. Also managed the preparation of the Final Plat for the project through Pinal County.	<input checked="" type="checkbox"/> Check if project performed with current firm
5.	(1) TITLE AND LOCATION (City and State) Verrado Victory District Phase 1 Buckeye, AZ	(2) YEAR COMPLETED
		Professional Services
	(3) BRIEF DESCRIPTION (Brief scope, size, cost, etc.) AND SPECIFIC ROLE Served as survey project manager for preparation of the final plat for the residential project.	<input type="checkbox"/> Check if project performed with current firm

4. Resumes of Key Personnel Proposed for this Contract (Complete one Section 4 for each key person.)

a. NAME Alyssa Paulus, PE	b. ROLE IN THIS CONTRACT Project Engineer	c. YEARS EXPERIENCE	
		1. TOTAL 5	2. WITH CURRENT FIRM 1
d. LOCATION (City and State) Bowman Consulting, 1295 W. Washington St., Suite 108, Tempe, AZ			
e. EDUCATION (DEGREE AND SPECIALIZATION) B.S. Civil Engineering from Arizona State University		f. PROFESSIONAL TRAINING - REGISTRATIONS AZPE #58513	
g. OTHER PROFESSIONAL QUALIFICATIONS (Organizations, Awards, etc.)			

H. RELEVANT PROJECTS

1.	(1) TITLE AND LOCATION (City and State) Queen Creek Station Queen Creek, AZ	(2) YEAR COMPLETED
		Professional Services Present
	(3) BRIEF DESCRIPTION (Brief scope, size, cost, etc.) AND SPECIFIC ROLE Project Engineer for site grading, drainage, and retention for the 1,139-acre, 677-lot single family residential subdivision. Responsible for preparing technical reports and hydraulic models for drainage, water and wastewater systems. The scope of services include construction drawings: including in-depth grading and drainage studies and calculations, drainage report, mass grading plan, lift station, paving, water, sewer, final plat, Engineer of Record services and pre-construction management. CD's also include an overall project storm water pollution prevention plan and master plan. Off-site improvements include half street improvements to Ellsworth Road including paving, utilities, curb and gutter, sidewalk and landscaping.	
		<input checked="" type="checkbox"/> Check if project performed with current firm
2.	(1) TITLE AND LOCATION (City and State) Southwest Gas Valley District On-Call Engineering	(2) YEAR COMPLETED
		Professional Services Present
	(3) BRIEF DESCRIPTION (Brief scope, size, cost, etc.) AND SPECIFIC ROLE Project Engineer for the design of new gas distribution systems, gas line replacement, and abandonment on an as-needed basis for Casa Grande and surrounding communities in Pinal, Maricopa, and Gila County. Designs include services to Maricopa Station commercial development in the City of Maricopa, residential distribution services for Robson Ranch Subdivision in Pinal County, and the gas main abandonment and replacement of over 6,000 feet of gas main and 140 residential services in Gila County.	
		<input checked="" type="checkbox"/> Check if project performed with current firm
3.	(1) TITLE AND LOCATION (City and State) Layton Lakes Master Planned Community Chandler, AZ	(2) YEAR COMPLETED
		Professional Services Present
	(3) BRIEF DESCRIPTION (Brief scope, size, cost, etc.) AND SPECIFIC ROLE Serving as the Project Engineer for the 832-acre Master Planned Community. Responsible for the drainage design, technical reports, water and sewer analysis throughout the project site including hydraulic models and calculations. Coordinated with the City of Chandler, Flood Control District of Maricopa County (FCDMC) and Roosevelt Water Conservation District (RWCD) for various aspects of design. Assisted with the hydraulic analysis and preparation of a Conditional Letter of Map Revision (CLOMR) to remove lots from the floodplain. The scope of services include complete subdivision construction plans including; extensive grading and drainage analysis, drainage calculations, grading and drainage plan, drainage report, Conditional Letter of Map Revision (CLOMR) to remove some of the lots from the floodplain, paving, water and sewer plans.	
		<input checked="" type="checkbox"/> Check if project performed with current firm
4.	(1) TITLE AND LOCATION (City and State) Young's Farm Ashley County, Arkansas	(2) YEAR COMPLETED
		Professional Services 2012
	(3) BRIEF DESCRIPTION (Brief scope, size, cost, etc.) AND SPECIFIC ROLE Project Engineer for the design and technical assistance of over 560 acres of wetland restoration. The project scope included converting abandoned fish ponds into migratory bird and various wildlife habitat. Special consideration was taken to restore historic waterways and drainage patterns as well as providing a manageable moist soil unit system for the systematic flooding and dewatering to promote the growth of wetland vegetation. Responsible for topographic survey; design of moist soil units, sloughs, weirs, and spillways; and construction drawing preparation.	
		<input type="checkbox"/> Check if project performed with current firm
5.	(1) TITLE AND LOCATION (City and State) M&C Farms Prairie County, Arkansas	(2) YEAR COMPLETED
		Professional Services 2011
	(3) BRIEF DESCRIPTION (Brief scope, size, cost, etc.) AND SPECIFIC ROLE Provided engineering design and technical assistance to restore over 1,150 acres of farmland into wetlands. Responsible for topographic survey; design of moist soil units, sloughs, channel reshaping, and spillways; construction drawing preparation; and construction oversight. Coordinated with the Arkansas Game and Fish Commission for design of future Game and Fish youth hunting area within the project.	
		<input type="checkbox"/> Check if project performed with current firm

4. Resumes of Key Personnel Proposed for this Contract (Complete one Section 4 for each key person.)

a. NAME Jared Gardner, PE	b. ROLE IN THIS CONTRACT Project Engineer	c. YEARS EXPERIENCE	
		1. TOTAL 7	2. WITH CURRENT FIRM 2
d. LOCATION (City and State) Bowman Consulting, 1295 W. Washington St., Suite 108, Tempe, AZ			
e. EDUCATION (DEGREE AND SPECIALIZATION) B.S. in Civil Engineering from Brigham Young University		f. PROFESSIONAL TRAINING - REGISTRATIONS AZPE #57123	
g. OTHER PROFESSIONAL QUALIFICATIONS (Organizations, Awards, etc.)			

H. RELEVANT PROJECTS

1.	(1) TITLE AND LOCATION (City and State) Queen Creek Station Queen Creek, AZ	(2) YEAR COMPLETED	
		Professional Services 2014	Construction (if applicable)
	(3) BRIEF DESCRIPTION (Brief scope, size, cost, etc.) AND SPECIFIC ROLE Project Engineer for site grading, drainage, and retention. Responsible for the hydraulic study and hydrologic analysis. This project is a 1,139 acre, 677-lot single family subdivision located at Germann and Rittenhouse Roads The scope of services include construction drawings: including in-depth grading and drainage studies and calculations, drainage report, mass grading plan, lift station, paving, water, sewer, final plat, Engineer of Record services and pre-construction management. CD's also include an overall project storm water pollution prevention plan and master plan. Off-site improvements include half street improvements to Ellsworth Road including paving, utilities, curb and gutter, sidewalk and landscaping.	<input checked="" type="checkbox"/> Check if project performed with current firm	
2.	(1) TITLE AND LOCATION (City and State) Bordeaux Gilbert, AZ	(2) YEAR COMPLETED	
		Professional Services Present	Construction (if applicable)
	(3) BRIEF DESCRIPTION (Brief scope, size, cost, etc.) AND SPECIFIC ROLE Served as Project Engineer for site grading, drainage, and retention. Responsible for the hydraulic study and hydrologic analysis. This project is a 31 acre, 45-lot single family subdivision located on San Tan Boulevard east of Higley Road. Managed the development of the construction drawings which included: in depth grading and drainage studies and calculations, drainage report, fissure mitigation, paving, water, sewer, final plat, Engineer of Record services and pre-construction management. CD's also include an overall project storm water pollution prevention plan. Half street improvements to San Tan Boulevard including paving, utilities, curb and gutter, sidewalk and landscaping.	<input checked="" type="checkbox"/> Check if project performed with current firm	
3.	(1) TITLE AND LOCATION (City and State) Ellsworth Road Widening Queen Creek, AZ	(2) YEAR COMPLETED	
		Professional Services Present	Construction (if applicable) Present
	(3) BRIEF DESCRIPTION (Brief scope, size, cost, etc.) AND SPECIFIC ROLE Served as Project Engineer for site grading, drainage, and retention. Responsible for the hydraulic study and hydrologic analysis. This project is a 31 acre, 45-lot single family subdivision located on San Tan Boulevard east of Higley Road. Managed the development of the construction drawings which included: in depth grading and drainage studies and calculations, drainage report, fissure mitigation, paving, water, sewer, final plat, Engineer of Record services and pre-construction management. CD's also include an overall project storm water pollution prevention plan. Offsite improvements include half street improvements to San Tan Boulevard including paving, utilities, curb and gutter, sidewalk and landscaping.	<input checked="" type="checkbox"/> Check if project performed with current firm	
4.	(1) TITLE AND LOCATION (City and State) Sonoran Commons; Phoenix, AZ	(2) YEAR COMPLETED	
		Professional Services 2014	Construction (if applicable)
	(3) BRIEF DESCRIPTION (Brief scope, size, cost, etc.) AND SPECIFIC ROLE Served as Project Engineer for this 40-acre, 100-lot project site. Design services included supporting documentations and exhibits for the PAD, preliminary site plan, final improvement plans and reports, final site plans and final plats. As with the other projects in the North Black Canyon Corridor Sonoran Commons is bisected by a 404 jurisdictional wash with significant flows, adjacent to Arizona State Land Department, is comprised of significant fall across the site requiring intense grading design and required to be designed to satisfy the North Black Canyon Corridor Guidelines. The site requires cutoff walls due to the high flow rates of the washes, coordination with the U.S. Army Corps of Engineers, multiple utility agencies, the City of Phoenix, ASLD and proposed adjacent developers for ROW acquisition, land swaps and slope easements. He completed the grading and drainage studies, final draft report, and drainage calculations.	<input checked="" type="checkbox"/> Check if project performed with current firm	
5.	(1) TITLE AND LOCATION (City and State) Hendrix Pointe Estates; Mesa, AZ	(2) YEAR COMPLETED	
		Professional Services Present	Construction (if applicable)
	(3) BRIEF DESCRIPTION (Brief scope, size, cost, etc.) AND SPECIFIC ROLE Served as Project Engineer for site grading, drainage, and retention. Responsible for the hydraulic study and hydrologic analysis. This project is a 19-acre, 37-lot single family subdivision located at Brown and Crismon Roads. The scope of services include construction drawings: including in depth grading and drainage studies and calculations, drainage report, mass grading plan, paving, water, sewer, final plat, Engineer of Record services and pre-construction management. CD's also include an overall project storm water pollution prevention plan and master plan. Offsite improvements include half street improvements to Brown Road including paving, utilities, curb and gutter, sidewalk and landscaping.	<input checked="" type="checkbox"/> Check if project performed with current firm	

4. Resumes of Key Personnel Proposed for this Contract (Complete one Section 4 for each key person.)

a. NAME Jessica Sarkissian, AICP, LEED AP	b. ROLE IN THIS CONTRACT Senior Land Planner	c. YEARS EXPERIENCE	
		1. TOTAL 11	2. WITH CURRENT FIRM 2
d. LOCATION (City and State) Bowman Consulting, 1295 W. Washington St., Suite 108, Tempe, AZ			
e. EDUCATION (DEGREE AND SPECIALIZATION) MA, Administration and Public Planning from Northern Arizona University B.S. Regional Development from University of Arizona		f. PROFESSIONAL TRAINING - REGISTRATIONS AICP #270780 LEED AP	
g. OTHER PROFESSIONAL QUALIFICATIONS (Organizations, Awards, etc.) Arizona Planning Association Board Member (2013-Present), Arizona Planning Association Social Media Liaison (2013-Present), Town of Gilbert Planning Commissioner (2009-2012), Town of Gilbert Zoning Hearing Officer (2010-2012), Town of Gilbert 2011 General Plan Steering Committee Member, Town of Gilbert 2011 General Plan Sub-Committee Chair, Bolder Mountain Highlands Design Review Board (2013 – Present), Power Ranch HOA Board of Directors (2009-2010), Power Ranch HOA Design Review Board (2009-2012)			

H. RELEVANT PROJECTS

1.	(1) TITLE AND LOCATION (City and State) City Gate Gilbert, AZ	(2) YEAR COMPLETED
	(3) BRIEF DESCRIPTION (Brief scope, size, cost, etc.) AND SPECIFIC ROLE Ms. Sarkissian provided land planning and entitlement work for the approximately 61-acre regional commercial project helping to process the development through the entitlement process including Rezone, Preliminary Plat, Design Review and Final Plat. Worked with Town staff and neighbors on their comments and concerns and provided positive results with an approval.	Professional Services Present
		Construction (if applicable)
		<input checked="" type="checkbox"/> Check if project performed with current firm
2.	(1) TITLE AND LOCATION (City and State) Arizona Farms Unincorporated Pinal County, AZ	(2) YEAR COMPLETED
	(3) BRIEF DESCRIPTION (Brief scope, size, cost, etc.) AND SPECIFIC ROLE Jessica served as land planner for the 1,184-acre residential, commercial, mixed use, public and quasi-public and industrial site. Coordinated with several municipal departments to resolve issues regarding land development and circulation issues on a site with several constraints. Worked on the required submittal exhibits and document text for the entitlement process and coordinated with other firms to generate a high caliber submittal. During the Town's own General Plan Amendment, Jessica was successful in coordinating with the Town and their consultant the proposed changes into their amendment and thus ensuring a smooth transition of the new circulation design of several realigned arterials into their final General Plan.	Professional Services 2008
		Construction (if applicable)
		<input type="checkbox"/> Check if project performed with current firm
3.	(1) TITLE AND LOCATION (City and State) Bordeaux Gilbert, AZ	(2) YEAR COMPLETED
	(3) BRIEF DESCRIPTION (Brief scope, size, cost, etc.) AND SPECIFIC ROLE Serving as land planner for the 31-acre large lot residential site in the South Gilbert San Tan Character Area. Working on developing the land plan for the site taking into account the Area Plan for the site and impact on the surrounding properties. Prepared pre-application documents for the pre-plat and met with the Town for comments. Preparing the formal pre-plat submittal on the project for future site development	Professional Services 2014
		Construction (if applicable)
		<input checked="" type="checkbox"/> Check if project performed with current firm
4.	(1) TITLE AND LOCATION (City and State) Hendrix Estates Mesa, AZ	(2) YEAR COMPLETED
	(3) BRIEF DESCRIPTION (Brief scope, size, cost, etc.) AND SPECIFIC ROLE Ms. Sarkissian worked as the land planner in coordination with the land attorney on the entitlements for an approximately 19-acre, 37-lot subdivision located at Brown and Crismon Roads. Work included entitlement and coordination of rezoning and design review. Coordinated with neighbors and the City on neighbor concerns and design requirements for the site located within the Desert Uplands Character area of Mesa.	Professional Services 2014
		Construction (if applicable)
		<input checked="" type="checkbox"/> Check if project performed with current firm
5.	(1) TITLE AND LOCATION (City and State) Cloud Estates Queen Creek, AZ	(2) YEAR COMPLETED
	(3) BRIEF DESCRIPTION (Brief scope, size, cost, etc.) AND SPECIFIC ROLE As land planner, Ms. Sarkissian worked on the entitlements for an approximately 17-acre large lot subdivision that included coordination with the Town on extension and improvement of utilities and roadway. Extensive work was done to comply with the surrounding community as well as comply with the Town's General Plan and overall character of the area and give the residents a quality large lot community which implemented a variety of design and engineering standards based on a variety of lot sizes.	Professional Services 2014
		Construction (if applicable)
		<input checked="" type="checkbox"/> Check if project performed with current firm

4. Resumes of Key Personnel Proposed for this Contract (Complete one Section 4 for each key person.)

a. NAME Jeff Rybarczyk, PE	b. ROLE IN THIS CONTRACT Project Engineer	c. YEARS EXPERIENCE	
		1. TOTAL 28	2. WITH CURRENT FIRM 1
d. LOCATION (City and State) Bowman Consulting, 1295 W Washington Street, Suite 108, Tempe, AZ			
e. EDUCATION (DEGREE AND SPECIALIZATION) B.S. Civil Engineering from University of Maryland		f. PROFESSIONAL TRAINING - REGISTRATIONS AZPE #28117	
g. OTHER PROFESSIONAL QUALIFICATIONS (Organizations, Awards, etc.)			

H. RELEVANT PROJECTS

1.	(1) TITLE AND LOCATION (City and State) FedEx Distribution Center Chandler, Arizona	(2) YEAR COMPLETED	
		Professional Services 2014	Construction (if applicable) 2014
	(3) BRIEF DESCRIPTION (Brief scope, size, cost, etc.) AND SPECIFIC ROLE Serving as the Project Manager for the preliminary phase of the project. The project site, located on Queen Creek Road just east of Gilbert Road in Chandler, Arizona, consists of approximately 48 acres with proposed buildings totaling over 300,000 square feet. The scope of services include due diligence studies for zoning verification, utility availability, required roadway improvements, and cost estimates, preparation of preliminary site, grading and utility plans, and coordination of proposed improvements with city staff, owner, adjacent developers and other design professionals.	<input checked="" type="checkbox"/>	Check if project performed with current firm
2.	(1) TITLE AND LOCATION (City and State) City Gate Gilbert, Arizona	(2) YEAR COMPLETED	
		Professional Services Present	Construction (if applicable)
	(3) BRIEF DESCRIPTION (Brief scope, size, cost, etc.) AND SPECIFIC ROLE Serving as the Project Manager for approximately 67 acres of land located at the southeast corner of Baseline Road and Higley Road in Gilbert, Arizona. The scope of services include preparation of rezoning plans, exhibits and reports which included drainage report, water report and wastewater reports. Project also encompassed the preliminary plat, design review and final plat process for the entire project as well as the 20 newly created parcels within the site.	<input checked="" type="checkbox"/>	Check if project performed with current firm
3.	(1) TITLE AND LOCATION (City and State) La Jara Farms II Queen Creek, Arizona	(2) YEAR COMPLETED	
		Professional Services Present	Construction (if applicable)
	(3) BRIEF DESCRIPTION (Brief scope, size, cost, etc.) AND SPECIFIC ROLE Serving as the Project Manager for the rezoning of 83 lots on approximately 77 acres of land located at the southwest corner of Germann Road and Hawes Road in Queen Creek, Arizona. The scope of services include preparation of rezoning plans, exhibits and reports which included drainage report, water report and wastewater report, preparation and coordination of PAD submittal package, and preparation of preliminary grading and retention plans and calculations. Coordinate submittal with attorneys, planners and other design professionals.	<input checked="" type="checkbox"/>	Check if project performed with current firm
4.	(1) TITLE AND LOCATION (City and State) Desert Foothills Estates Bullhead City, Arizona	(2) YEAR COMPLETED	
		Professional Services 2007	Construction (if applicable)
	(3) BRIEF DESCRIPTION (Brief scope, size, cost, etc.) AND SPECIFIC ROLE Served as the project manager for planning and civil engineering improvement plans for a 640 acre master planned community located at Bullhead Parkway and Desert Foothills Drive in Bullhead City, Arizona. Site consisted of a section of land which was subdivided into 14 large parcels with associated roadway, drainage, and utility infrastructure improvement plans. Site was subject to large off site flows as well as numerous Army Corps of Engineers jurisdictional waterways. The 14 large parcels were then individually planned and subdivided according to buyer's directive. Finished parcels included single family lot products of varying sizes, zero lot line products, apartment homes, an RV storage facility and a fueling station and convenience store. Plan preparation included conceptual plans, preliminary plats, site plans, grading plans, roadway improvement plans, water and sewer plans, HOA exhibits and final plats. Prepare and submit Arizona Department of Environmental Quality approval to construct applications, witness water and sewer utility testing and prepare results and as built plans for submittal to Arizona Department of Environmental Quality for approval of construction permits. Prepare as built plans for submittal to city, clients and community owner.	<input type="checkbox"/>	Check if project performed with current firm
5.	(1) TITLE AND LOCATION (City and State) Citadelle Plaza Retail, Office and Entertainment Complex Glendale, Arizona	(2) YEAR COMPLETED	
		Professional Services 2005	Construction (if applicable)
	(3) BRIEF DESCRIPTION (Brief scope, size, cost, etc.) AND SPECIFIC ROLE Served as project manager for the preparation of civil improvement plans for an 8-acre retail, office and entertainment complex located at the northwest corner of 59th Avenue and Utopia Road in Glendale, Arizona. Site consisted of eight buildings with pedestrian areas, grand entrance plaza and underground storm water retention. Design plans included site plan, grading and drainage plan with underground retention, utility plan, Off-site road improvement plan and storm water pollution prevention plan. Coordinate project improvement plans with architect and other design professionals.	<input type="checkbox"/>	Check if project performed with current firm

E. RESUMES OF KEY PERSONNEL PROPOSED FOR THIS CONTRACT

(Complete one Section E for each key person.)

12. NAME Chad Crockett, PE	13. ROLE IN THIS CONTRACT Project Engineer	14. YEARS EXPERIENCE	
		a. TOTAL 8	b. WITH CURRENT FIRM 1.5
15. FIRM NAME AND LOCATION <i>(City and State)</i> Bowman Consulting Group, 305 E. 4th Street, Safford, AZ			
16. EDUCATION <i>(DEGREE AND SPECIALIZATION)</i> B.S., Civil Engineering, Arizona State University		17. CURRENT PROFESSIONAL REGISTRATION <i>(STATE AND DISCIPLINE)</i> Registered Professional Engineer Arizona No. Civil 54517	
18. OTHER PROFESSIONAL QUALIFICATIONS <i>(Publications, Organizations, Training, Awards, etc.)</i>			

19. RELEVANT PROJECTS

(1) TITLE AND LOCATION <i>(City and State)</i>	(2) YEAR COMPLETED	
	PROFESSIONAL SERVICES	CONSTRUCTION <i>(If applicable)</i>
Town of Duncan Riverside Well Site Improvements, Duncan, Arizona	2012	2013
a. (3) BRIEF DESCRIPTION <i>(Brief scope, size, cost, etc.)</i> AND SPECIFIC ROLE <input type="checkbox"/> Check if project performed with current firm Project Manager - Construct a new back-up well next to the existing town well. Includes site grading, a new well head, sanitary seal, connection to the existing piping system, electrical service and switch gear, and sealing of two existing but unusable well casings at the same location.		
Curt Ensign Storm Shelter, Safford, Arizona	2012	2013
b. (3) BRIEF DESCRIPTION <i>(Brief scope, size, cost, etc.)</i> AND SPECIFIC ROLE <input type="checkbox"/> Check if project performed with current firm Project Manager - design a reinforce concrete shelter that meets or exceeds the requirements of the International Building Code.		
Morenci High School Parking Lot, Morenci, Arizona	2012	2012
c. (3) BRIEF DESCRIPTION <i>(Brief scope, size, cost, etc.)</i> AND SPECIFIC ROLE <input checked="" type="checkbox"/> Check if project performed with current firm Project Manager - The project replaced an aged facility with a new one with enhanced pedestrian safety, effect needed draining improvements, and greatly enhance the aesthetics of the area with landscaping and replacement lighting.		
Springerville Firefighter Facility, Springerville, AZ	2014	IP
d. (3) BRIEF DESCRIPTION <i>(Brief scope, size, cost, etc.)</i> AND SPECIFIC ROLE <input checked="" type="checkbox"/> Check if project performed with current firm Project Manager - Prepare a Preliminary Engineering Report in Accordance with the Economic Development Administration's Engineering report requirements in order to assist in the procurement of funding to construct Phase One of the Southwest Natural Resources Training Facilities which is a planned multiuse center.		
Big Ditch Improvement Project - Phase B	2013	2014
e. (3) BRIEF DESCRIPTION <i>(Brief scope, size, cost, etc.)</i> AND SPECIFIC ROLE <input checked="" type="checkbox"/> Check if project performed with current firm Project Manager - An EPA Section 319 Water Quality Improvement Project Grant was awarded to the Pioneer Irrigation District to complete Phase B which extended the 36" HDPE pipe from the Phase A termination point as far east as funds would allow converting a portion of the Bid Ditch open canal to buried pipe.		

E. RESUMES OF KEY PERSONNEL PROPOSED FOR THIS CONTRACT

(Complete one Section E for each key person.)

12. NAME Reed Larson, PE	13. ROLE IN THIS CONTRACT Project Engineer	14. YEARS EXPERIENCE	
		a. TOTAL 18+	b. WITH CURRENT FIRM 2
15. FIRM NAME AND LOCATION <i>(City and State)</i> Bowman Consulting Group, 305 E. 4th Street, Safford, AZ			
16. EDUCATION <i>(DEGREE AND SPECIALIZATION)</i> BS, Civil Engineering, University of Arizona MS, Civil Engineering, Purdue University		17. CURRENT PROFESSIONAL REGISTRATION <i>(STATE AND DISCIPLINE)</i> Registered Professional Engineer AZ No. Civil 35158	
18. OTHER PROFESSIONAL QUALIFICATIONS <i>(Publications, Organizations, Training, Awards, etc.)</i>			

19. RELEVANT PROJECTS

(1) TITLE AND LOCATION <i>(City and State)</i>	(2) YEAR COMPLETED	
	PROFESSIONAL SERVICES	CONSTRUCTION <i>(If applicable)</i>
Gila Valley Temple, Central, AZ	2009	2010
a. (3) BRIEF DESCRIPTION <i>(Brief scope, size, cost, etc.)</i> AND SPECIFIC ROLE <input type="checkbox"/> Check if project performed with current firm Project Manager - The project consisted of building a temple and meeting house. The project included boundary and topographic surveys for a 17 acre site; and the design of all the infrastructure for the project as well as construction staking and oversight. Working closely with the City of Safford to design a 12" water main to be installed under US Highway 70 and railroad to service site and future developments was essential.		
Burro Alley Roadway Design		
b. (3) BRIEF DESCRIPTION <i>(Brief scope, size, cost, etc.)</i> AND SPECIFIC ROLE <input type="checkbox"/> Check if project performed with current firm Project Manager - Burro Alley is the main thoroughfare for the town of Morenci, AZ. The project included resurfacing existing roadway; constructing new curb, gutter, and sidewalk; a retaining wall; decorative had rails; and street lighting. Design and construction management services were provided.		
Sulfide Ore Leaching	2013	2014
c. (3) BRIEF DESCRIPTION <i>(Brief scope, size, cost, etc.)</i> AND SPECIFIC ROLE <input checked="" type="checkbox"/> Check if project performed with current firm Project Manager - Modifications to the leaching and SX/EW processes at FMSO in order to maximize recovery from the sulfide ores. The project includes the design of a new Conveyor and Air Blower System; as well as a Raffinate System Upgrade and the design of new SX Settlers.		
Morenci Training Center, Morenci, Arizona	2013	2013
d. (3) BRIEF DESCRIPTION <i>(Brief scope, size, cost, etc.)</i> AND SPECIFIC ROLE <input checked="" type="checkbox"/> Check if project performed with current firm Project Manager - The Morenci Town Center is the parking area that ties the Morenci Day Care Center and the Community Center together. Services included the grading and drainage design for new sidewalks, island curb and new parking lot along with the design of new underground storm drains.		
Shannon Road	2013	2014
e. (3) BRIEF DESCRIPTION <i>(Brief scope, size, cost, etc.)</i> AND SPECIFIC ROLE <input checked="" type="checkbox"/> Check if project performed with current firm This project consists of a 1 mile realignment of the existing Shannon Road from Copper Verde Lane to Riverside Drive in Clifton, AZ which will serve as a collector road for the Coper Verde Subdivision. Construction activity will include grading, paving, storm drains, guardrails, etc. and a corrugated multi-plate Con-Arch structure where the realignment crosses over the existing railroad tracks.		

E. RESUMES OF KEY PERSONNEL PROPOSED FOR THIS CONTRACT

(Complete one Section E for each key person.)

12. NAME Richard Thomas, PE	13. ROLE IN THIS CONTRACT Project Engineer	14. YEARS EXPERIENCE	
		a. TOTAL 37+	b. WITH CURRENT FIRM 1.5
15. FIRM NAME AND LOCATION <i>(City and State)</i> Bowman Consulting Group, 305 E. 4th Street, Safford, AZ			
16. EDUCATION <i>(DEGREE AND SPECIALIZATION)</i> B.S., Civil Engineering, University of Arizona		17. CURRENT PROFESSIONAL REGISTRATION <i>(STATE AND DISCIPLINE)</i> Registered Professional Engineer Arizona No. Civil No. 20958 Mechanical No. 15653 Land Surveying No. 16619 Sanitary No. 25612	
18. OTHER PROFESSIONAL QUALIFICATIONS <i>(Publications, Organizations, Training, Awards, etc.)</i>			

19. RELEVANT PROJECTS

(1) TITLE AND LOCATION <i>(City and State)</i>	(2) YEAR COMPLETED	
	PROFESSIONAL SERVICES	CONSTRUCTION <i>(If applicable)</i>
City of Safford Water System Improvements, Safford, AZ	2010	2011
a. (3) BRIEF DESCRIPTION <i>(Brief scope, size, cost, etc.)</i> AND SPECIFIC ROLE <input type="checkbox"/> Check if project performed with current firm Project Manager - Design and construction two 2-million gallon and one 3-million gallon water storage tanks purposely sited at the largest demand and future growth areas at Hillcrest, Lebanon and Discovery Park in order to repair the City's largest 10-Million Gallon water storage facility due to deterioration.		
City of Safford Morris Well Solar Project Safford, AZ	2011	2011
b. (3) BRIEF DESCRIPTION <i>(Brief scope, size, cost, etc.)</i> AND SPECIFIC ROLE <input type="checkbox"/> Check if project performed with current firm Project Engineer - developed design plans and documents for the expansion of the Hillcrest Booster Station solar array to also power the Morris Wells during daytime hours.		
Town of Patagonia Water System Improvements, Patagonia, AZ	2012	IP
c. (3) BRIEF DESCRIPTION <i>(Brief scope, size, cost, etc.)</i> AND SPECIFIC ROLE <input checked="" type="checkbox"/> Check if project performed with current firm Project Manager in the design and construction of approximately 8,655 l.f. of 6", 12" water main and appurtenances. 22 fire hydrants, 19 services, pipe installation by directional drilling and/or boring and casing and water production facilities.		
City of Safford Solomon Water System Improvements, Safford, AZ	2011	2014
d. (3) BRIEF DESCRIPTION <i>(Brief scope, size, cost, etc.)</i> AND SPECIFIC ROLE <input checked="" type="checkbox"/> Check if project performed with current firm Project Manager -assisted in the procurement of a \$2.4 million dollar Community Development Block Grant (CDBG) for improvements to the water distribution system which included installation of approximately 3,610 lf of 12-inch diameter pipeline and 10,356 lf of 2", 6" and 8" diameter water mains.		
New Swift Trail Site Development, Safford, AZ	2012	IP
e. (3) BRIEF DESCRIPTION <i>(Brief scope, size, cost, etc.)</i> AND SPECIFIC ROLE <input checked="" type="checkbox"/> Check if project performed with current firm Project Manager - Conceptual site plan with a Grading and Drainage Plan for the overall detailed site plan. Dimensions locating structures horizontally and vertically, and access locations, a final Grading and Drainage plan with design of storm water retention facilities, percolation rate testing and septic/leach sewage disposal system design, well location with setbacks, ADOT driveway design, State Land access layout and Storm Water Pollution Protection Plan.		

5. EXAMPLE PROJECTS WHICH BEST ILLUSTRATE PROPOSED TEAM'S QUALIFICATIONS FOR THIS CONTRACT

(Present no more than five (5) projects. Complete one Section 5 for each project.)

a. TITLE AND LOCATION <i>(City and State)</i> FedEx Distribution Center Chandler, AZ		b. YEAR COMPLETED PROFESSIONAL SERVICES 2014		CONSTRUCTION <i>(If applicable)</i>
23. PROJECT OWNER'S INFORMATION				
c. PROJECT OWNER FedEx	d. ORIGINAL BUDGET/NTE AMOUNT OF PROJECT \$125,000	e. TOTAL COST OF PROJECT \$130,000		

f. BRIEF DESCRIPTION OF PROJECT AND RELEVANCE TO THIS CONTRACT (include scope, size, and length of project)

Provided civil design for a 311,000 sq. ft. distribution facility on a 48-acre site, located on Queen Creek Road just east of Gilbert Road in Chandler. The scope of services included: due diligence studies for zoning verification, utility availability, required roadway improvements, and cost estimates, preparation of preliminary site, grading and utility plans, and coordination of proposed improvements with city staff, owner, adjacent developers and other design professionals. Project required coordination of improvements with the City of Chandler, FAA, Roosevelt Water Conservation District, MCESD, offsite improvement engineer, overall property developer (75 acres), architect, other engineering disciplines and the design/ build contractor.



5. EXAMPLE PROJECTS WHICH BEST ILLUSTRATE PROPOSED TEAM'S QUALIFICATIONS FOR THIS CONTRACT

(Present no more than five (5) projects. Complete one Section 5 for each project.)

a. TITLE AND LOCATION <i>(City and State)</i> El Oso Park Phoenix, AZ	b. YEAR COMPLETED	
	PROFESSIONAL SERVICES 2012	CONSTRUCTION <i>(If applicable)</i> 2013

23. PROJECT OWNER'S INFORMATION

c. PROJECT OWNER City of Phoenix	d. ORIGINAL BUDGET/NTE AMOUNT OF PROJECT \$14,907	e. TOTAL COST OF PROJECT \$
--------------------------------------------	-------------------------------------------------------------	---------------------------------------

f. BRIEF DESCRIPTION OF PROJECT AND RELEVANCE TO THIS CONTRACT (include scope, size, and length of project)

Bowman provided design services and construction administration and inspection services during the construction phase for the complete re-development of this 40-acre City Park including sports facilities, trails, and open space areas in West Phoenix.



5. EXAMPLE PROJECTS WHICH BEST ILLUSTRATE PROPOSED TEAM'S QUALIFICATIONS FOR THIS CONTRACT

(Present no more than five (5) projects. Complete one Section 5 for each project.)

a. TITLE AND LOCATION <i>(City and State)</i> Mesa Arterial Streets Reconstruction (Stapley, Recker & Signal Butte) Groups 1 & 4 including Water & Gas Line Design (COM Project 44-007-001) Mesa, AZ	b. YEAR COMPLETED	
	PROFESSIONAL SERVICES 2010	CONSTRUCTION <i>(If applicable)</i> Ongoing

23. PROJECT OWNER'S INFORMATION

c. PROJECT OWNER City of Mesa	d. ORIGINAL BUDGET/NTE AMOUNT OF PROJECT \$189,040	e. TOTAL COST OF PROJECT
-----------------------------------------	--------------------------------------------------------------	--------------------------

f. BRIEF DESCRIPTION OF PROJECT AND RELEVANCE TO THIS CONTRACT (include scope, size, and length of project)

Bowman provided civil engineering design and survey services for the City of Mesa Arterial Reconstruction Project, which includes existing utility as-built verification and base map preparation for the City Arterial Street Reconstruction Program, which included reconstruction of 1 mile of Stapley Drive between Brown Road and University Drive, Recker Road north of Thomas, and Signal Butte from Southern to Wier. Design services include the design of those areas of pavement reconstruction, concrete repairs, sidewalk ramp modifications, sidewalk additions, traffic signal indicator modifications, signing and striping and cost estimates. In 2011 the City requested that we add the design of a 2-inch gas main and 12-inch waterline along Stapley. Additional topographic survey was obtained as well as underground utilities vertical location. In addition, we are providing the City of Mesa an Engineer's Opinion of Probable Construction Cost based on the 90% plans, bidding assistance, and construction administration.



5. EXAMPLE PROJECTS WHICH BEST ILLUSTRATE PROPOSED TEAM'S QUALIFICATIONS FOR THIS CONTRACT

(Present no more than five (5) projects. Complete one Section 5 for each project.)

a. TITLE AND LOCATION <i>(City and State)</i> SRP On-Call Surveying Services	b. YEAR COMPLETED	
	PROFESSIONAL SERVICES 2014	CONSTRUCTION <i>(If applicable)</i>

23. PROJECT OWNER'S INFORMATION

c. PROJECT OWNER Salt River Project (SRP)	d. ORIGINAL BUDGET/NTE AMOUNT OF PROJECT \$ T&M	e. TOTAL COST OF PROJECT
-----------------------------------------------------	---------------------------------------------------------------	--------------------------

f. BRIEF DESCRIPTION OF PROJECT AND RELEVANCE TO THIS CONTRACT (include scope, size, and length of project)

On-call survey services for various tasks including right-of-way and easement staking, topographic surveys, legal descriptions and exhibits, and gas main and service layouts and staking. Our team has refined the processes of coordination, plan review, conflict identification and resolution which has allowed us to complete tasks such as the 500kv Transmission Line from PV Nuclear Plant to Casa Grande Topographic Survey, Arizona Cardinals/ University of Phoenix Stadium Staking, Valley Metro Light Rail Relocate, Chicago Cubs Spring Training Facility and Riverview Park Staking, and the Loop 202 & University/ Broadway Relocate. Bowman is currently providing mobile LiDAR scanning survey services for the SOR mobile mapping pilot project in two sections of Maricopa County. Bowman crews are performing scanning of all arterial roads, sub-arterial roads, alleys, and canals within these two sections.

5. EXAMPLE PROJECTS WHICH BEST ILLUSTRATE PROPOSED TEAM'S QUALIFICATIONS FOR THIS CONTRACT

(Present no more than five (5) projects. Complete one Section 5 for each project.)

a. TITLE AND LOCATION <i>(City and State)</i> City of Phoenix Fire Hydrant Install Design Project –#WS85500393 Phoenix, AZ	b. YEAR COMPLETED	
	PROFESSIONAL SERVICES 2013	CONSTRUCTION <i>(If applicable)</i> 2013

23. PROJECT OWNER'S INFORMATION

c .PROJECT OWNER City of Phoenix	d .ORIGINAL BUDGET/NTE AMOUNT OF PROJECT Design Cost \$114,319	e. TOTAL COST OF PROJECT
--------------------------------------------	--------------------------------------------------------------------------	--------------------------

f. BRIEF DESCRIPTION OF PROJECT AND RELEVANCE TO THIS CONTRACT (include scope, size, and length of project)

Bowman provided topographic mapping and engineered plans for the construction of necessary water fire hydrant services for various streets. This project included six quarter sections of land where hydrants will be evaluated to determine if they meet the current standards within the City of Phoenix and then replace, modify or add fire hydrants and/or waterline if necessary. This project involved extensive public outreach with residents and local businesses through door hangers and mailers. A dedicated phone line was installed to receive calls and talk with interested citizens.

Project challenges included numerous discrepancies between the as-builts, Phoenix water maps and the actual field conditions. Significant site visits and investigation were also required with potholing to adequately design the proposed solutions. Additionally public outreach was very time consuming as hundreds of neighbors were notified and interest arose in relation to the affects onto their properties from the improvements. Calls and questions from the public were addressed individually to inform the neighbors of the process, timing and what to expect.





ATTACHMENT I – General Qualifications

ANNUAL REQUEST FOR QUALIFICATIONS AND EXPERIENCE NO:
ADSPO15-00004729

STATE PROCUREMENT OFFICE
Department of Administration
100 North 15th Avenue, Suite 201
Phoenix, Arizona 85007

6. ADDITIONAL INFORMATION

a. PROVIDE ANY ADDITIONAL INFORMATION YOU FEEL MAY BE NECESSARY TO DESCRIBE YOUR FIRMS QUALIFICATIONS. (ATTACH ADDITIONAL SHEETS AS NEEDED.)

See Attached Organizational Charts

7. ANNUAL AVERAGE PROFESSIONAL SERVICES REVENUES OF FIRM FOR LAST 3 YEARS

a. Percentage of Total Work Attributable to State, Federal and Municipal Government	20%
b. Percentage of Total Work Attributable to Non-Government Work:	80%

8. AUTHORIZED REPRESENTATIVE. The foregoing is a statement of facts.

Signature: 

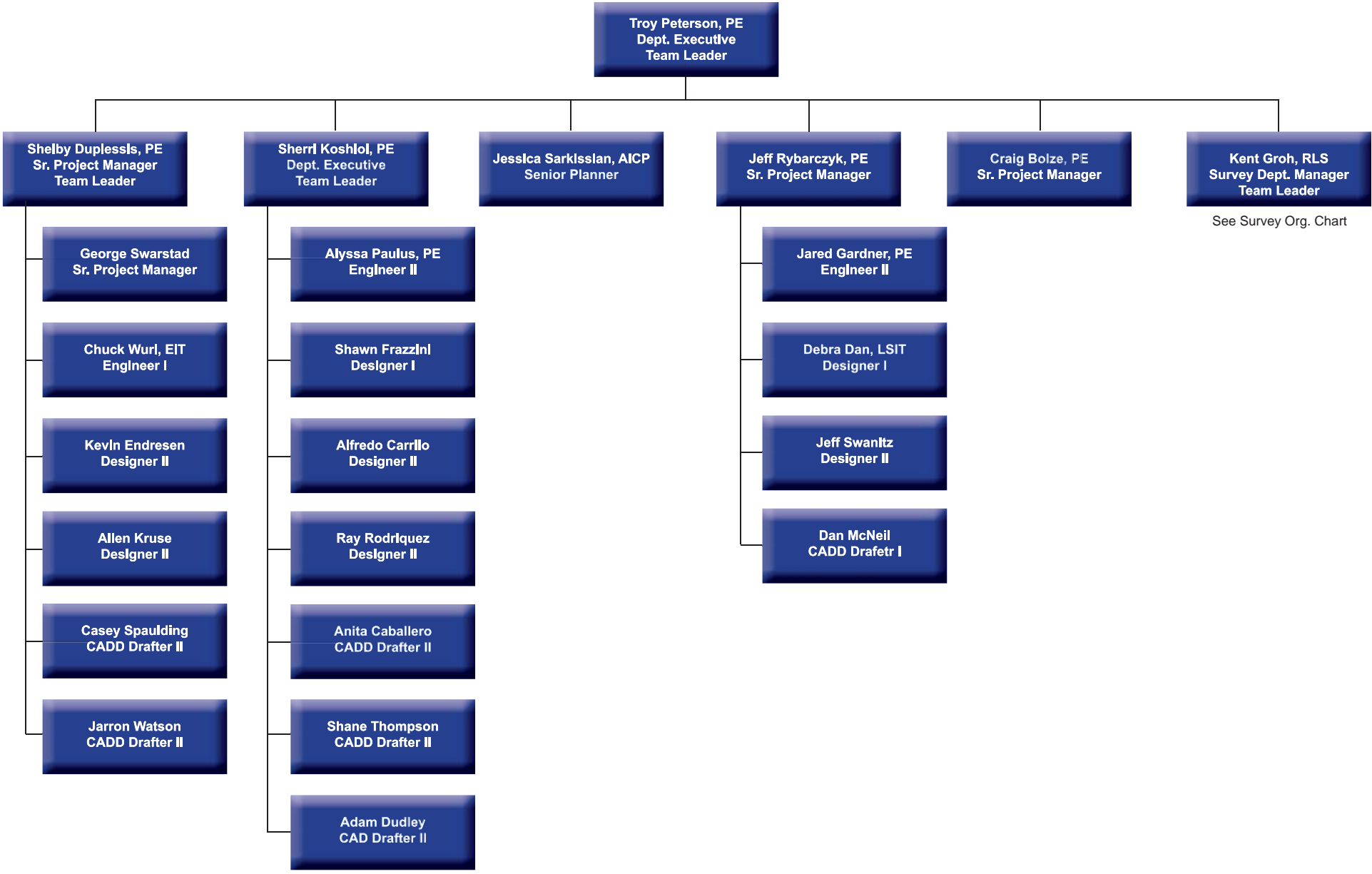
Date: 12/22/2014

Name: Troy Peterson, PE

Title: Principal

Bowman

CONSULTING



Kent Groh, LS
Survey Dept. Manager
Team Leader

Doug Toney, LS, CFedS
Project Manager

Tim Held, LS
Computer Tech II

Phil Fedor, LS, CST III
Asst. Project Manager

Anthony Grass
Computer Tech I

Mary Payan
Party Chief

Terry Sunderland, CST I
Jr. Party Chief

Phil Fedor, LS, CST III
Party Chief

Bryan Taebel
Party Chief

Mark Knutson
Instrument Operator

Daniel McCaffrey
Instrument Operator

Kyle Elliott
Intern