



ATTACHMENT I – General Qualifications

ANNUAL REQUEST FOR QUALIFICATIONS AND EXPERIENCE NO:
ADSP015-00004729

STATE PROCUREMENT OFFICE
Department of Administration
100 North 15th Avenue, Suite 201
Phoenix, Arizona 85007

(If a firm has branch offices, complete for each specific branch office seeking work.)

1. Annual Request for Qualifications

a. FIRM (OR BRANCH OFFICE) NAME:	HDR Engineering, Inc.
b. FIRM (OR BRANCH OFFICE) STREET:	3200 East Camelback Road, Suite 350
c. FIRM (OR BRANCH OFFICE) CITY:	Phoenix
d. FIRM (OR BRANCH OFFICE) STATE:	Arizona
e. FIRM (OR BRANCH OFFICE) ZIP CODE:	85018
f. YEAR ESTABLISHED:	1959 (in Arizona); 1985 (Phoenix)
(g1). OWNERSHIP - TYPE:	Private Corporation
(g2). OWNERSHIP - SMALL BUSINESS STATUS:	N/A
h. POINT OF CONTACT NAME AND TITLE:	David Skinner Vice President/Southwest Area Operations Manager
i. POINT OF CONTACT TELEPHONE NUMBER:	602.522.7700
j. POINT OF CONTACT E-MAIL ADDRESS:	David.Skinner@hdrinc.com
k. NAME OF FIRM (If block 1a is a branch office):	HDR Engineering, Inc.



ATTACHMENT I – General Qualifications
ANNUAL REQUEST FOR QUALIFICATIONS AND EXPERIENCE NO:
ADSP015-00004729

STATE PROCUREMENT OFFICE
Department of Administration
100 North 15th Avenue, Suite 201
Phoenix, Arizona 85007

2. EMPLOYEES BY DISCIPLINE

a. Discipline Title	b. Function: Primary (P) or Secondary (S)	c. No. of Employees - Firm	d. No. of Employees - Branch
Aeronautical Engineer	P	2	1
Archeologist	P	80	1
Architect	P	646	9
Biologist	P	69	1
CADD Technician	P	588	17
Civil Engineer	P	660	7
Construction Manager	P	210	6
Electrical Engineer	P	264	7
Environmental Engineer	P	99	1
Environmental Scientist	P	369	2
Geographical Information System Specialist	P	93	2
Geologist	P	71	1
Landscape Architect	P	35	0
Mechanical Engineer	P	187	9
Project Manager	P	1,759	20
Sanitary Engineer	P	243	6
Soils Engineer	P	52	2
Structural Engineer	P	257	12
Technician/Analyst	P	1,164	14
Transportation Engineer	P	802	15
Water Resources Engineer	P	248	2
(Other Employees - Not Listed)	P/S	693	22
Total		8,591	157



ATTACHMENT I – General Qualifications
**ANNUAL REQUEST FOR QUALIFICATIONS AND EXPERIENCE NO:
ADSP015-00004729**

STATE PROCUREMENT OFFICE
Department of Administration
100 North 15th Avenue, Suite 201
Phoenix, Arizona 85007

(If a firm has branch offices, complete for each specific branch office seeking work.)

1. **Annual Request for Qualifications**

a. FIRM (OR BRANCH OFFICE) NAME:	HDR Engineering, Inc.
b. FIRM (OR BRANCH OFFICE) STREET:	101 North 1st Avenue, Suite 1950
c. FIRM (OR BRANCH OFFICE) CITY:	Phoenix
d. FIRM (OR BRANCH OFFICE) STATE:	Arizona
e. FIRM (OR BRANCH OFFICE) ZIP CODE:	85003
f. YEAR ESTABLISHED:	2005
(g1). OWNERSHIP - TYPE:	Private Corporation
(g2). OWNERSHIP - SMALL BUSINESS STATUS:	N/A
h. POINT OF CONTACT NAME AND TITLE:	Jason Mikkelsen Managing Principal
i. POINT OF CONTACT TELEPHONE NUMBER:	602.792.8800
j. POINT OF CONTACT E-MAIL ADDRESS:	<u>Jason.Mikkelsen@hdrinc.com</u>
k. NAME OF FIRM (If block 1a is a branch office):	HDR Engineering, Inc.



ATTACHMENT I – General Qualifications
ANNUAL REQUEST FOR QUALIFICATIONS AND EXPERIENCE NO:
ADSP015-00004729

STATE PROCUREMENT OFFICE
Department of Administration
100 North 15th Avenue, Suite 201
Phoenix, Arizona 85007

2. EMPLOYEES BY DISCIPLINE

a. Discipline Title	b. Function: Primary (P) or Secondary (S)	c. No. of Employees - Firm	d. No. of Employees - Branch
Aeronautical Engineer	P	2	0
Archeologist	P	80	0
Architect	P	646	0
Biologist	P	69	0
CADD Technician	P	588	0
Civil Engineer	P	660	2
Construction Manager	P	210	0
Electrical Engineer	P	264	0
Environmental Engineer	P	99	0
Environmental Scientist	P	369	0
Geographical Information System Specialist	P	93	0
Geologist	P	71	0
Landscape Architect	P	35	2
Mechanical Engineer	P	187	0
Project Manager	P	1,759	3
Sanitary Engineer	P	243	0
Soils Engineer	P	52	0
Structural Engineer	P	257	0
Technician/Analyst	P	1,164	1
Transportation Engineer	P	802	5
Water Resources Engineer	P	248	0
(Other Employees - Not Listed)	P/S	693	9
Total		8,591	23



ATTACHMENT I – General Qualifications
**ANNUAL REQUEST FOR QUALIFICATIONS AND EXPERIENCE NO:
ADSP015-00004729**

STATE PROCUREMENT OFFICE
Department of Administration
100 North 15th Avenue, Suite 201
Phoenix, Arizona 85007

(If a firm has branch offices, complete for each specific branch office seeking work.)

1. **Annual Request for Qualifications**

a. FIRM (OR BRANCH OFFICE) NAME:	HDR Engineering, Inc.
b. FIRM (OR BRANCH OFFICE) STREET:	1 South Church Avenue, Suite 625
c. FIRM (OR BRANCH OFFICE) CITY:	Tucson
d. FIRM (OR BRANCH OFFICE) STATE:	Arizona
e. FIRM (OR BRANCH OFFICE) ZIP CODE:	85701
f. YEAR ESTABLISHED:	1985 (Tucson presence); 2014 (new address)
(g1). OWNERSHIP - TYPE:	Private Corporation
(g2). OWNERSHIP - SMALL BUSINESS STATUS:	N/A
h. POINT OF CONTACT NAME AND TITLE:	Michael Barton Managing Principal
i. POINT OF CONTACT TELEPHONE NUMBER:	520.584.3600
j. POINT OF CONTACT E-MAIL ADDRESS:	Michael.Barton@hdrinc.com
k. NAME OF FIRM (If block 1a is a branch office):	HDR Engineering, Inc.



ATTACHMENT I – General Qualifications
ANNUAL REQUEST FOR QUALIFICATIONS AND EXPERIENCE NO:
ADSP015-00004729

STATE PROCUREMENT OFFICE
Department of Administration
100 North 15th Avenue, Suite 201
Phoenix, Arizona 85007

2. EMPLOYEES BY DISCIPLINE

a. Discipline Title	b. Function: Primary (P) or Secondary (S)	c. No. of Employees - Firm	d. No. of Employees - Branch
Aeronautical Engineer	P	2	0
Archeologist	P	80	0
Architect	P	646	1
Biologist	P	69	0
CADD Technician	P	588	6
Civil Engineer	P	660	6
Construction Manager	P	210	0
Electrical Engineer	P	264	0
Environmental Engineer	P	99	0
Environmental Scientist	P	369	0
Geographical Information System Specialist	P	93	0
Geologist	P	71	0
Landscape Architect	P	35	0
Mechanical Engineer	P	187	0
Project Manager	P	1,759	4
Sanitary Engineer	P	243	0
Soils Engineer	P	52	0
Structural Engineer	P	257	2
Technician/Analyst	P	1,164	5
Transportation Engineer	P	802	4
Water Resources Engineer	P	248	0
(Other Employees - Not Listed)	P/S	693	7
Total		8,591	35



ATTACHMENT I – General Qualifications
ANNUAL REQUEST FOR QUALIFICATIONS AND EXPERIENCE NO:
ADSP015-00004729

STATE PROCUREMENT OFFICE
Department of Administration
100 North 15th Avenue, Suite 201
Phoenix, Arizona 85007

3. PROFILE OF FIRM'S EXPERIENCE AND ANNUAL AVERAGE REVENUE FOR LAST YEAR

a. Approximate No. of Projects	b. Experience	c. Revenue Index Number (see below)
15	Air Pollution Control	3
3	Airports; Terminals & Hangers; Freight Handling	7
50	Bridges	10
75	Construction Management	10
28	Dams; (Concrete; Arch)	5
32	Dams; (Earth; Rock); Dikes; Levees	8
25	Enviro. Impact Studies, Assessments, or Stmtms	10
100	Environmental Remediation	10
250	Highways: Streets; Airfield Paving; Parking Lots	10
20	Industrial Buildings; Manufacturing Plants	4
50	Planning (Site, Installation, and Project)	8
35	Power Generation, Transmission, Distribution	10
15	Railroad: Rapid Transit	10
20	Rivers: Canals; Waterways; Flood Control	7
60	Sewage Collection; Treatment and Disposal	10
75	Solid Wastes; Incineration; Landfill	9
100	Surveying; Platting; Mapping; Flood Plain Studies	6
50	Storm Water Handling & Facilities	7
100	Testing & Inspection Services	7
250	Traffic & Transportation Engineering	10
60	Water Resources; Hydrology; Ground Water	9
75	Water Supply; Treatment and Distribution	10

PROFESSIONAL SERVICES REVENUE INDEX NUMBER

- | | |
|---|---|
| 1. Less than \$100,000 | 6. \$2 million to less than \$5 million |
| 2. \$100,000 to less than \$250,000 | 7. \$5 million to less than \$10 million |
| 3. \$250,000 to less than \$500,000 | 8. \$10 million to less than \$25 million |
| 4. \$500,000 to less than \$1 million | 9. \$25 million to less than \$50 million |
| 5. \$1 million to less than \$2 million | 10. \$50 million or greater |



ATTACHMENT I – General Qualifications
ANNUAL REQUEST FOR QUALIFICATIONS AND EXPERIENCE NO:
ADSP015-00004729

STATE PROCUREMENT OFFICE
Department of Administration
100 North 15th Avenue, Suite 201
Phoenix, Arizona 85007

4. Resumes of Key Personnel Proposed for this Contract (Complete one Section 4 for each key person.)

a. NAME Jason Mikkelsen, PE, LEED AP	b. ROLE IN THIS CONTRACT Contract Manager/ Project Manager	c. YEARS EXPERIENCE	
		1. TOTAL 17	2. WITH CURRENT FIRM 3
d. LOCATION (City and State) Phoenix, Arizona			
e. EDUCATION (DEGREE AND SPECIALIZATION) BS, Civil Engineering		f. PROFESSIONAL TRAINING - REGISTRATIONS Professional Engineer (AZ #37312); ISI Envision Sustainability Professional; LEED Accredited Professional; LEED AP Building Design + Construction	
g. OTHER PROFESSIONAL QUALIFICATIONS (Organizations, Awards, etc.) Jason has 17 years experience and has been responsible for leading multiple teams of engineers, designers, and technicians to provide outstanding client service, prepare quality construction documents, build excellent relationships, and deliver successful projects. He has managed the design of commercial, federal, and energy-related site development projects ranging from 1 to 300+ acres, including municipal coordination, site layout, grading and drainage, site utilities, permitting, and construction administration.			

H. RELEVANT PROJECTS

1.	(1) TITLE AND LOCATION (City and State) AZDOA - State Capital Emergency Generator Evaluation and Utility Mapping, Phoenix, AZ	(2) YEAR COMPLETED	
		Professional Services 2014	Construction (if applicable) N/A
	(3) BRIEF DESCRIPTION (Brief scope, size, cost, etc.) AND SPECIFIC ROLE Project Manager. Obtained comprehensive information about existing emergency systems for multiple state-owned buildings in the vicinity of the State Capital campus in Downtown Phoenix, AZ as well as one other building in Phoenix, and three buildings in Tucson. Work also included existing subsurface utilities information. Fee: \$212K	<input checked="" type="checkbox"/> Check if project performed with current firm	
2.	(1) TITLE AND LOCATION (City and State) Arizona State University - Interdisciplinary Science and Technology Building 4 (ISTB4), Tempe, AZ	(2) YEAR COMPLETED	
		Professional Services 2010	Construction (if applicable) 2012
	(3) BRIEF DESCRIPTION (Brief scope, size, cost, etc.) AND SPECIFIC ROLE Project Manager for survey, civil design and limited construction administration for a 240,000 square foot high-rise structure that houses technology research, laboratory, and office space. Fee - \$140,000 (civil)	<input type="checkbox"/> Check if project performed with current firm	
3.	(1) TITLE AND LOCATION (City and State) ASDC - Prison Complexes, Perryville, Yuma & Tucson, AZ	(2) YEAR COMPLETED	
		Professional Services 2008	Construction (if applicable) 2009
	(3) BRIEF DESCRIPTION (Brief scope, size, cost, etc.) AND SPECIFIC ROLE Project Manager. Design services and support for three new prison complexes in Perryville, Yuma, and Tucson, that added an additional 4,000 inmate beds. Construction Value: \$100M	<input type="checkbox"/> Check if project performed with current firm	
4.	(1) TITLE AND LOCATION (City and State) US DHS - Renovate Bldg. 680, Support contract - Federal Law Enforcement Training Center (FLETC), Glynn, GA	(2) YEAR COMPLETED	
		Professional Services 2012	Construction (if applicable) 2013
	(3) BRIEF DESCRIPTION (Brief scope, size, cost, etc.) AND SPECIFIC ROLE Civil engineer for the renovation of 80,000+ SF facility adding office and storage space to support FLETC. Civil design included new parking areas, utility upgrades, and on-site drainage improvements.	<input checked="" type="checkbox"/> Check if project performed with current firm	
5.	(1) TITLE AND LOCATION (City and State) Pima County - Ina Road Water Pollution, Regional Optimization Master Plan (ROMP) Lab Expansion, AZ	(2) YEAR COMPLETED	
		Professional Services 2014-Present	Construction (if applicable) N/A
	(3) BRIEF DESCRIPTION (Brief scope, size, cost, etc.) AND SPECIFIC ROLE Civil engineer providing site design services for the expansion of this wastewater laboratory facility, including site planning, on-site utility design, and grading & drainage improvements.	<input checked="" type="checkbox"/> Check if project performed with current firm	



ATTACHMENT I – General Qualifications

**ANNUAL REQUEST FOR QUALIFICATIONS AND EXPERIENCE NO:
ADSP015-00004729**

**STATE PROCUREMENT OFFICE
Department of Administration
100 North 15th Avenue, Suite 201
Phoenix, Arizona 85007**

4. Resumes of Key Personnel Proposed for this Contract (Complete one Section 4 for each key person.)

a. NAME Mat Perkins, AIA, LEED AP, PMP	b. ROLE IN THIS CONTRACT Civil (Architectural Design)	c. YEARS EXPERIENCE	
		1. TOTAL 16	2. WITH CURRENT FIRM 15
d. LOCATION (City and State) Tucson, Arizona			
e. EDUCATION (DEGREE AND SPECIALIZATION) BA, Architecture		f. PROFESSIONAL TRAINING - REGISTRATIONS Registered Architect (AZ #39128) LEED AP Building Design + Construction LEED Accredited Professional Project Management Professional	

g. OTHER PROFESSIONAL QUALIFICATIONS (Organizations, Awards, etc.)
Mat has worked as a Designer and Project Architect for numerous private, state, and federal projects, most recently working on several Border Patrol Stations in Texas and Arizona as well as several Design-Build projects for the DOE. His ability to work closely with a contractor throughout project delivery has resulted in successful, award winning projects. Mat ensures that sustainability is designed into all projects.

H. RELEVANT PROJECTS

1.	(1) TITLE AND LOCATION (City and State) ADOT - DPS Pioneer Park	(2) YEAR COMPLETED	
	(3) BRIEF DESCRIPTION (Brief scope, size, cost, etc.) AND SPECIFIC ROLE Senior Project Manager. This project consists of two facilities to serve the public: \$1.2 million, 8,000 SF DPS district office containing multi-purpose rooms, squad rooms, booking and evidence areas and \$4.6 million Pioneer Park Regional Transportation Center on 21 acres with 12,000 SF Motor Vehicle Division district offices, 8,000 SF district transportation offices and a 6,500 SF materials testing laboratory on 21 master planned acres.	Professional Services 2002	Construction (if applicable) 2002
<input checked="" type="checkbox"/> Check if project performed with current firm			
2.	(1) TITLE AND LOCATION (City and State) USACE/Department of Homeland Security - Customs Border Patrol Co-Location Feasibility Study, Ajo, AZ	(2) YEAR COMPLETED	
	(3) BRIEF DESCRIPTION (Brief scope, size, cost, etc.) AND SPECIFIC ROLE Task Manager. Provided architectural project management support for the study. Mat performed all space and costing analysis. Project included a scope of work with 1,600 personnel in ten organizational components located at six dispersed facilities and a core campus. The facilities included both owned and leased property and the utilization varied from law enforcement to general office to secure operations space.	Professional Services 2011	Construction (if applicable) N/A
<input checked="" type="checkbox"/> Check if project performed with current firm			
3.	(1) TITLE AND LOCATION (City and State) USACE/Department of Homeland Security - - Ajo Border Patrol Station, Ajo, AZ	(2) YEAR COMPLETED	
	(3) BRIEF DESCRIPTION (Brief scope, size, cost, etc.) AND SPECIFIC ROLE Project Manager/Architect: Provided day-to-day oversight of architectural document preparation. Project was performed under a Fort Worth District ECSO IDIQ. Project included full architectural and engineering services for a \$26 million, 55,200 SF Border Patrol Station. The project achieved LEED Gold designation.	Professional Services 2012	Construction (if applicable) 2012
<input checked="" type="checkbox"/> Check if project performed with current firm			
4.	(1) TITLE AND LOCATION (City and State) USACE/Department of Homeland Security - Nogales Border Patrol Facility Assessment, Nogales, AZ	(2) YEAR COMPLETED	
	(3) BRIEF DESCRIPTION (Brief scope, size, cost, etc.) AND SPECIFIC ROLE Senior Project Architect. The Nogales Border Patrol station requires the renovaton of 6,550 of the existing warehouse to provide 22 new command contral worksations and a video wall. These workstations and the equipment that supports them required the addition of 17 new equipment racks and the electrical and mechanical to support the new services.	Professional Services 2012	Construction (if applicable) 2013
<input checked="" type="checkbox"/> Check if project performed with current firm			



ATTACHMENT I – General Qualifications

ANNUAL REQUEST FOR QUALIFICATIONS AND EXPERIENCE NO:
ADSP015-00004729

STATE PROCUREMENT OFFICE
Department of Administration
100 North 15th Avenue, Suite 201
Phoenix, Arizona 85007

5.	(1) TITLE AND LOCATION (<i>City and State</i>) USACE/Department of Homeland Security - Tactical Infrastructure Southwest Border, Nogales, AZ	(2) YEAR COMPLETED	
	(3) BRIEF DESCRIPTION (<i>Brief scope, size, cost, etc.</i>) AND SPECIFIC ROLE Project Architect. HDR is providing a fully developed design standard for the Southern Border 250 Agent Station. The standard, which is a pilot for designing the remaining core and special function facilities, clearly and concisely convey the specific intent of CBP in designing Border Patrol facilities that meet mission requirements, can be delivered efficiently within reasonable cost, and will meet sustainability and all code regulations.	Professional Services 2010-Present	Construction (if applicable) N/A
		<input checked="" type="checkbox"/>	Check if project performed with current firm



ATTACHMENT I – General Qualifications
ANNUAL REQUEST FOR QUALIFICATIONS AND EXPERIENCE NO:
ADSP015-00004729

STATE PROCUREMENT OFFICE
Department of Administration
100 North 15th Avenue, Suite 201
Phoenix, Arizona 85007

4. Resumes of Key Personnel Proposed for this Contract (Complete one Section 4 for each key person.)

a. NAME Jill Bennett, PE	b. ROLE IN THIS CONTRACT Transportation - Task Leader	c. YEARS EXPERIENCE	
		1. TOTAL 20	2. WITH CURRENT FIRM 8

d. LOCATION (City and State) **Phoenix, Arizona**

e. EDUCATION (DEGREE AND SPECIALIZATION)
BS, Civil Engineering

f. PROFESSIONAL TRAINING - REGISTRATIONS
Professional Engineer (AZ #33414); ISI Envision Sustainability Professional

g. OTHER PROFESSIONAL QUALIFICATIONS (Organizations, Awards, etc.)

Jill has over 20 years of engineering experience and specializes in project management, roadway geometric design, and traffic engineering for various transportation clients. Her background includes project team coordination, right-of-way and utility coordination, plan preparation, roadway and drainage design, digital terrain modeling, cost and quantity estimates, and post-design construction support.

H. RELEVANT PROJECTS

1.	(1) TITLE AND LOCATION (City and State) ADOT - SR 189, International Border to Grand Avenue - Mariposa Port of Entry (POE), Nogales, AZ	(2) YEAR COMPLETED	
		Professional Services 2011-Present	Construction (if applicable) N/A
	(3) BRIEF DESCRIPTION (Brief scope, size, cost, etc.) AND SPECIFIC ROLE Deputy Project Manager for the preparation of a design concept report, environmental assessment, AASHTO report, traffic and drainage reports, and change of access report for approximately 3.5 miles of SR 189 in Nogales. The first phase involves data collection, traffic modeling and evaluation, and alternative development.	<input checked="" type="checkbox"/> Check if project performed with current firm	
2.	(1) TITLE AND LOCATION (City and State) ADOT - Development On-Call, Statewide, AZ	(2) YEAR COMPLETED	
		Professional Services 2014-Present	Construction (if applicable) N/A
	(3) BRIEF DESCRIPTION (Brief scope, size, cost, etc.) AND SPECIFIC ROLE Contract Manager for this on-call contract to provide as-needed development services serving a number of departments in ADOT.	<input checked="" type="checkbox"/> Check if project performed with current firm	
3.	(1) TITLE AND LOCATION (City and State) ADOT - US 60 at Vicksburg Road Roundabout, PS&E and PDS, La Paz County, AZ	(2) YEAR COMPLETED	
		Professional Services 2010-Present	Construction (if applicable) N/A
	(3) BRIEF DESCRIPTION (Brief scope, size, cost, etc.) AND SPECIFIC ROLE Deputy Project Manager for the final design and construction support of a new single lane modern roundabout in western Arizona with the highest rural accident rate in the state. Federal safety funds were used to construct this project that was complicated by heavy truck use, localized roadway flooding issues, utility coordination, and lighting design.	<input checked="" type="checkbox"/> Check if project performed with current firm	
4.	(1) TITLE AND LOCATION (City and State) ADOT - I-17/SR 69 Cordes Junction Traffic Interchange, Cordes Junction, AZ	(2) YEAR COMPLETED	
		Professional Services 2012	Construction (if applicable) 2013
	(3) BRIEF DESCRIPTION (Brief scope, size, cost, etc.) AND SPECIFIC ROLE Project Engineer for this project that improved the operational characteristics of the interchange and segregated local traffic from through traffic reducing congestion and delays.	<input checked="" type="checkbox"/> Check if project performed with current firm	
5.	(1) TITLE AND LOCATION (City and State) City of Phoenix - On-Call Traffic Engineering Services for Sky Harbor International Airport, Phoenix, AZ	(2) YEAR COMPLETED	
		Professional Services 2010-Present	Construction (if applicable) N/A
	(3) BRIEF DESCRIPTION (Brief scope, size, cost, etc.) AND SPECIFIC ROLE Contract manager/project manager including managing scope, schedule, budget, and all tasks assigned in support of traffic operations and transportation planning for PSHIA. Tasks include coordination with ADOT, MAG, and FHWA; identifying traffic access and pinch points along Sky Harbor Boulevard with solutions; definition of micro-simulation and traffic demand models for the airport sub-area; and traffic engineering support for miscellaneous projects.	<input checked="" type="checkbox"/> Check if project performed with current firm	



ATTACHMENT I – General Qualifications
ANNUAL REQUEST FOR QUALIFICATIONS AND EXPERIENCE NO:
ADSP015-00004729

STATE PROCUREMENT OFFICE
Department of Administration
100 North 15th Avenue, Suite 201
Phoenix, Arizona 85007

4. Resumes of Key Personnel Proposed for this Contract (Complete one Section 4 for each key person.)

a. NAME Kurt Watzek	b. ROLE IN THIS CONTRACT Environmental - Task Leader	c. YEARS EXPERIENCE	
		1. TOTAL 29	2. WITH CURRENT FIRM 14

d. LOCATION (City and State) **Phoenix, Arizona**

e. EDUCATION (DEGREE AND SPECIALIZATION)
Master of Landscape Architecture
BA, Biology

f. PROFESSIONAL TRAINING - REGISTRATIONS
Professional Engineer (AZ #33414); ISI Envision Sustainability Professional

g. OTHER PROFESSIONAL QUALIFICATIONS (Organizations, Awards, etc.)

Kurt is a senior environmental planner with 26 years of experience in environmental analysis, site evaluation, environmental permitting compliance, and planning. Kurt is currently the ADOT Environmental On-call contract manager and has worked on ADOT projects for 15 years providing environmental clearances and working closely on interdisciplinary support efforts, including cultural resources, biology, hydrology, Section 404/401, and engineering. He is also the senior Clean Water Act specialist and senior biologist for HDR's Phoenix office. He has coordinated various National Environmental Policy Act and state environmental policy efforts on a wide variety of projects across Arizona.

H. RELEVANT PROJECTS

	(1) TITLE AND LOCATION (City and State)	(2) YEAR COMPLETED	
		Professional Services	Construction (if applicable)
1.	ADOT - Environmental On-Call Contracts, Statewide, AZ	2000-Present	N/A
	(3) BRIEF DESCRIPTION (Brief scope, size, cost, etc.) AND SPECIFIC ROLE Contract Manager, Task Manager and Environmental Planner. Responsible for all aspects of the On-Call contracts administration and execution, reviewing and processing task order requests and cost estimates, negotiations, task order tracking and monitoring, invoicing, and quality assurance/quality control (QA/QC).	<input checked="" type="checkbox"/>	Check if project performed with current firm
2.	ADOT - South Mountain Corridor Environmental Impact Statement and Location/Design Concept Report, Phoenix, AZ	2010-Present	N/A
	(3) BRIEF DESCRIPTION (Brief scope, size, cost, etc.) AND SPECIFIC ROLE Environmental Scientist providing Section 404 guidance and biology lead for the proposed 26-mile South Mountain Freeway Corridor.	<input checked="" type="checkbox"/>	Check if project performed with current firm
3.	ADOT - Transportation Enhancement and Scenic Roads On-Call, Statewide, AZ	2006-2010	N/A
	(3) BRIEF DESCRIPTION (Brief scope, size, cost, etc.) AND SPECIFIC ROLE Senior Environmental Planner for various projects throughout the state. This project included pedestrian improvements, scenic byway visual assessments, bike lane design, bridge fencing improvements, and constructability reviews.	<input checked="" type="checkbox"/>	Check if project performed with current firm
4.	Iberdrola Renewables - Dry Lake Wind Project Phase II, Snowflake, AZ	2009	N/A
	(3) BRIEF DESCRIPTION (Brief scope, size, cost, etc.) AND SPECIFIC ROLE Environmental planner for environmental and permitting support services for the Dry Lake II Wind Project including plant surveys, wetlands determination, 404 permitting support, cultural resource surveys, and assistance with County permits.	<input checked="" type="checkbox"/>	Check if project performed with current firm
5.	ADOT - San Rafael State Park Access Roads, Santa Cruz County, AZ	2009	N/A
	(3) BRIEF DESCRIPTION (Brief scope, size, cost, etc.) AND SPECIFIC ROLE Environmental Scientist. Assisted ADOT and Arizona State Parks (ASP) in developing a new park located in far southern Arizona near the Mexican border. The San Rafael State Park is a picturesque 19th century ranch set in a pristine prairie landscape.	<input checked="" type="checkbox"/>	Check if project performed with current firm



ATTACHMENT I – General Qualifications
ANNUAL REQUEST FOR QUALIFICATIONS AND EXPERIENCE NO:
ADSP015-00004729

STATE PROCUREMENT OFFICE
Department of Administration
100 North 15th Avenue, Suite 201
Phoenix, Arizona 85007

4. Resumes of Key Personnel Proposed for this Contract (Complete one Section 4 for each key person.)

a. NAME	b. ROLE IN THIS CONTRACT	c. YEARS EXPERIENCE	
Tim Thomure, PE, PMP	Water/Wastewater - Task Leader	1. TOTAL 20	2. WITH CURRENT FIRM 7
d. LOCATION (City and State) Phoenix, Arizona			
e. EDUCATION (DEGREE AND SPECIALIZATION) Master of Engineering (Water Resources Engineering) Certificate, Environmental Policy & Mgmt. (Graduate Certificate in Water Policy) BA, Geography		f. PROFESSIONAL TRAINING - REGISTRATIONS Professional Engineer (AZ #51974) ISI Envision Sustainability Professional Project Management Professional	
g. OTHER PROFESSIONAL QUALIFICATIONS (Organizations, Awards, etc.) Tim has 20 years of experience working in public utilities, private industry, and consulting. His areas of expertise include integrated resource planning, public policy development, capital program/project management, water distribution infrastructure, recharge project development, and strategic planning. As HDR's Area W&NR Operations Manager, he currently serves as the project manager, principal engineer, or principal investigator for a series of active water infrastructure projects.			

H. RELEVANT PROJECTS

1.	(1) TITLE AND LOCATION (City and State) City of Phoenix - Concrete Reservoir Assessment and Improvements Program, Phoenix, AZ	(2) YEAR COMPLETED	
		Professional Services 2000-Present	Construction (if applicable) Various
	(3) BRIEF DESCRIPTION (Brief scope, size, cost, etc.) AND SPECIFIC ROLE Project Manager and Technical Reviewer of condition assessments and design services for the rehabilitation of City potable water concrete reservoirs. Since the completion of the initial reservoir assessment and improvements study by HDR in 2000, the City has rehabilitated or begun the rehabilitation of 14 large-capacity concrete reservoirs. Of those 14 reservoirs, HDR has provided design and CA&I services for 11 facilities.	<input checked="" type="checkbox"/> Check if project performed with current firm	
2.	(1) TITLE AND LOCATION (City and State) City of Phoenix - Transmission Main Inspection and Assessment Program, Phoenix, AZ	(2) YEAR COMPLETED	
		Professional Services 2014	Construction (if applicable) N/A
	(3) BRIEF DESCRIPTION (Brief scope, size, cost, etc.) AND SPECIFIC ROLE QA/QC Reviewer. HDR is providing condition assessment, emergency rehabilitation, construction administration and inspection, and program planning services for the City's large diameter prestressed concrete cylinder pipe (PCCP) (approximately 150 miles).	<input checked="" type="checkbox"/> Check if project performed with current firm	
3.	(1) TITLE AND LOCATION (City and State) Tucson Water, Reservoir and Tank Rehabilitation Program, Tucson, AZ	(2) YEAR COMPLETED	
		Professional Services 2010-Present	Construction (if applicable) N/A
	(3) BRIEF DESCRIPTION (Brief scope, size, cost, etc.) AND SPECIFIC ROLE Program Manager for this multi-year program involving condition assessment, condition assessment, rehabilitation design, and construction administration for 34 concrete reservoirs and 34 steel storage tanks. Facilities to be rehabilitated under this program range from less than 1 MG to 60 MG in size and were constructed from 1950 to the present day. The program includes all potable and reclaimed water storage facilities within the Tucson Water system.	<input checked="" type="checkbox"/> Check if project performed with current firm	
4.	(1) TITLE AND LOCATION (City and State) WaterReuse Research Foundation, Approaches to Maintain Consistently High Quality Recycled Water in Storage and Distribution Systems	(2) YEAR COMPLETED	
		Professional Services 2014	Construction (if applicable) N/A
	(3) BRIEF DESCRIPTION (Brief scope, size, cost, etc.) AND SPECIFIC ROLE Principal Investigator and Project Manager for this study designed to identify Best Management Practices to assist reclaimed water agencies in maintaining high water quality in recycled water storage and distribution systems.	<input checked="" type="checkbox"/> Check if project performed with current firm	



ATTACHMENT I – General Qualifications

ANNUAL REQUEST FOR QUALIFICATIONS AND EXPERIENCE NO:
ADSP015-00004729

STATE PROCUREMENT OFFICE
Department of Administration
100 North 15th Avenue, Suite 201
Phoenix, Arizona 85007

5.	(1) TITLE AND LOCATION (<i>City and State</i>) Central Arizona Project - Investigation of Binational Desalination for the Benefit of State of Arizona and Sonora, Mexico	(2) YEAR COMPLETED	
		Professional Services 2011	Construction (if applicable) N/A
	(3) BRIEF DESCRIPTION (<i>Brief scope, size, cost, etc.</i>) AND SPECIFIC ROLE Senior Project Engineer for the preliminary investigation for constructing a large-scale desalination facility adjacent to the Gulf of California to provide a new water supply to users in Sonora, Mexico and Arizona, U.S.A. Concurrent investigation of alternatives to convey the treated water to Imperial Dam in California for use and/or exchange for Colorado River water at other points long the system.	<input checked="" type="checkbox"/> Check if project performed with current firm	



ATTACHMENT I – General Qualifications
ANNUAL REQUEST FOR QUALIFICATIONS AND EXPERIENCE NO:
ADSP015-00004729

STATE PROCUREMENT OFFICE
Department of Administration
100 North 15th Avenue, Suite 201
Phoenix, Arizona 85007

4. Resumes of Key Personnel Proposed for this Contract (Complete one Section 4 for each key person.)

a. NAME	b. ROLE IN THIS CONTRACT	c. YEARS EXPERIENCE	
Michael LaBianca, AICP	Planning - Task Leader	1. TOTAL 25	2. WITH CURRENT FIRM 12
d. LOCATION (City and State) Phoenix, Arizona			
e. EDUCATION (DEGREE AND SPECIALIZATION) Master, Environmental Planning BS, Geological & Related Sciences		f. PROFESSIONAL TRAINING - REGISTRATIONS AICP - American Institute of Certified Planners, No. 019258	
g. OTHER PROFESSIONAL QUALIFICATIONS (Organizations, Awards, etc.) Michael LaBianca has broad-based planning experience through his 25+ years of involvement on a wide range of land use planning, environmental, and public outreach projects. His experience has involved consensus building and public participation, GIS analysis in identifying opportunities and constraints in land use planning, environmental (bio-physical) assessment, suitability analyses, and parks and open space planning.			

H. RELEVANT PROJECTS

1.	(1) TITLE AND LOCATION (City and State) ADOT - North-South Corridor Study Environmental Impact Statement and Location/Design Concept Report	(2) YEAR COMPLETED	
		Professional Services 2008-Present	Construction (if applicable) N/A
	(3) BRIEF DESCRIPTION (Brief scope, size, cost, etc.) AND SPECIFIC ROLE Project Manager for this study providing environmental services and evaluating alternatives for the proposed North-South Freeway in Pinal County from US 60 South to I-10. Alternatives include tolling and Public Private Partnerships as a potential funding source.	<input checked="" type="checkbox"/> Check if project performed with current firm	
2.	(1) TITLE AND LOCATION (City and State) ADOT - South Mountain Corridor Environmental Impact Statement and Location/Design Concept Report, Phoenix, AZ	(2) YEAR COMPLETED	
		Professional Services 2010-Present	Construction (if applicable) N/A
	(3) BRIEF DESCRIPTION (Brief scope, size, cost, etc.) AND SPECIFIC ROLE Planning and GIS mapping for preparation of socioeconomic and land use reports for the South Mountain Transportation Draft Environmental Impact Statement. Mapped zoning, general plan, and existing land use for study area encompassing six municipalities.	<input checked="" type="checkbox"/> Check if project performed with current firm	
3.	(1) TITLE AND LOCATION (City and State) City of Goodyear - Transportation Master Plan, Goodyear, AZ	(2) YEAR COMPLETED	
		Professional Services 2014	Construction (if applicable) N/A
	(3) BRIEF DESCRIPTION (Brief scope, size, cost, etc.) AND SPECIFIC ROLE Project Manager for the Transportation Master Plan that was developed through a process that considered the strategic vision of the City of Goodyear and incorporated the regional planning efforts of the MAG.	<input checked="" type="checkbox"/> Check if project performed with current firm	
4.	(1) TITLE AND LOCATION (City and State) ADOT - Various PARA and SATS studies, Statewide, AZ	(2) YEAR COMPLETED	
		Professional Services 2000-Present	Construction (if applicable) N/A
	(3) BRIEF DESCRIPTION (Brief scope, size, cost, etc.) AND SPECIFIC ROLE Project Manager / Project Engineer / Planner for multimodal transportation plans for several fast growing Arizona communities through the PARA or SATS program of ADOT. Completed studies include Lake Havasu City, Bullhead City, Winslow, Ak-Chin Indian Community, Fort McDowell Yavapai Nation, Salt River Pima-Maricopa Indian Community, Greenlee County Trails Plan, and the Town of Snowflake.	<input checked="" type="checkbox"/> Check if project performed with current firm	
5.	(1) TITLE AND LOCATION (City and State) Nevada DOT - Connecting Nevada: Nevada's Long Range Transportation Plan	(2) YEAR COMPLETED	
		Professional Services 2012-Present	Construction (if applicable) N/A
	(3) BRIEF DESCRIPTION (Brief scope, size, cost, etc.) AND SPECIFIC ROLE Deputy Project Manager to develop a long-range visionary document for the State to help guide transportation and infrastructure investments. An important element of the study was to develop Nevada's first-ever Statewide Travel Demand Model. The study also included an initial freight assessment to identify expanded economic development in the State.	<input checked="" type="checkbox"/> Check if project performed with current firm	



ATTACHMENT I – General Qualifications

**ANNUAL REQUEST FOR QUALIFICATIONS AND EXPERIENCE NO:
ADSP015-00004729**

**STATE PROCUREMENT OFFICE
Department of Administration
100 North 15th Avenue, Suite 201
Phoenix, Arizona 85007**

4. Resumes of Key Personnel Proposed for this Contract (Complete one Section 4 for each key person.)

a. NAME Laura Paty, RLA	b. ROLE IN THIS CONTRACT Planning / Landscape Architecture - Task Leader	c. YEARS EXPERIENCE	
		1. TOTAL 30	2. WITH CURRENT FIRM 12

d. LOCATION (City and State) **Phoenix, Arizona**

e. EDUCATION (DEGREE AND SPECIALIZATION)
BA, Landscape Architecture

f. PROFESSIONAL TRAINING - REGISTRATIONS
Registered Landscape Architect, Arizona, No. 23439

g. OTHER PROFESSIONAL QUALIFICATIONS (Organizations, Awards, etc.)

Laura has more than 30 years of experience in both planning and landscape architecture. Her background includes work in landscape architectural design, site planning, master planning, design guidelines, and landscape character analysis. She has been actively involved in or managed planning and design projects ranging from parks and recreation areas to public transit facilities.

H. RELEVANT PROJECTS

	(1) TITLE AND LOCATION (City and State)	(2) YEAR COMPLETED	
		Professional Services	Construction (if applicable)
1.	ADOT - Transportation Enhancement and Scenic Roads On-Call, Statewide, AZ	2006-2010	N/A
	(3) BRIEF DESCRIPTION (Brief scope, size, cost, etc.) AND SPECIFIC ROLE Contract/ Project manager for this on-call contract for projects throughout the state. This project includes pedestrian improvements, scenic byway visual assessments, bike lane design, bridge fencing improvements, and constructability reviews.	<input checked="" type="checkbox"/>	Check if project performed with current firm
2.	ADOT - South Mountain Corridor Environmental Impact Statement and Location/Design Concept Report, Phoenix, AZ	2010-Present	N/A
	(3) BRIEF DESCRIPTION (Brief scope, size, cost, etc.) AND SPECIFIC ROLE Landscape Architect and graphic design assistance for. the assessment of the new 26-mile South Mountain Freeway Corridor, which consists of completing an EIS and Location/Design Concept Report for ADOT.	<input checked="" type="checkbox"/>	Check if project performed with current firm
3.	ADOT - Southern Greenlee County Trails Study	2014	N/A
	(3) BRIEF DESCRIPTION (Brief scope, size, cost, etc.) AND SPECIFIC ROLE Deputy Project Manager and Landscape Architect for the development of a trails study to create a system of multiuse trails in Southern Greenlee County. The study will establish a conceptual trails network and also identify steps for funding and implementation.	<input checked="" type="checkbox"/>	Check if project performed with current firm
4.	ADOT - San Xavier Pedestrian Access and Safety Study, San Xavier Indian Reservation, AZ	2011	N/A
	(3) BRIEF DESCRIPTION (Brief scope, size, cost, etc.) AND SPECIFIC ROLE Deputy Project Manager responsible for the planning effort to develop a long-range pedestrian access improvement plan. Tasks include identifying pedestrian safety risk factors and recommending effective pedestrian pathways to connectivity to current and future pedestrian generators, and roadway enhancements including bicycle lanes, sidewalks, a landscape buffer, and amenities such as benches and shades to enhance the walking experience.	<input checked="" type="checkbox"/>	Check if project performed with current firm
5.	Arizona Public Service, Celeborn Substation Site, Buckeye, AZ	2008	2009
	(3) BRIEF DESCRIPTION (Brief scope, size, cost, etc.) AND SPECIFIC ROLE Landscape Architect for construction plans, specifications, and cost estimate for the site work needed for construction of the Celeborn Substation Site. Preparation of applications and accompanying documents to obtain construction permits from appropriate government agencies.	<input checked="" type="checkbox"/>	Check if project performed with current firm



ATTACHMENT I – General Qualifications
ANNUAL REQUEST FOR QUALIFICATIONS AND EXPERIENCE NO:
ADSP015-00004729

STATE PROCUREMENT OFFICE
Department of Administration
100 North 15th Avenue, Suite 201
Phoenix, Arizona 85007

4. Resumes of Key Personnel Proposed for this Contract (Complete one Section 4 for each key person.)

a. NAME Jerry Spencer, PE	b. ROLE IN THIS CONTRACT Structural Engineering (Vertical, Water/Wastewater) - Task Leader	c. YEARS EXPERIENCE	
		1. TOTAL 36	2. WITH CURRENT FIRM 14
d. LOCATION (City and State) Phoenix, Arizona			
e. EDUCATION (DEGREE AND SPECIALIZATION) BS, Civil Engineering		f. PROFESSIONAL TRAINING - REGISTRATIONS Professional Engineer (AZ #18565)	
g. OTHER PROFESSIONAL QUALIFICATIONS (Organizations, Awards, etc.) Jerry is an Arizona-based senior structural engineer with over 36 years of civil engineering experience in design and construction administration services related to pipelines, booster pump stations, water storage and other types of treatment plant structures.			

H. RELEVANT PROJECTS

	(1) TITLE AND LOCATION (City and State)	(2) YEAR COMPLETED	
		Professional Services	Construction (if applicable)
1.	City of Mesa - South CAP Reservoir and Pump Station, Mesa, AZ	2005	2009
	(3) BRIEF DESCRIPTION (Brief scope, size, cost, etc.) AND SPECIFIC ROLE Structural Engineer for 7.5 MG cast in place, buried finished water reservoir with wet well pumping system. Reservoir has a two-way CIP concrete roof slab with drop panels at columns, tapered vertical walls and a mat foundation. Pump station has three separate wet wells for 80 MGD. Facility includes: a 1,200 SF, two level influent building; 5,500 SF, three level effluent building with 1600 SF mezzanine and 650 SF basement; and a 12,000 SF electrical building.	<input checked="" type="checkbox"/>	Check if project performed with current firm
2.	Metropolitan Domestic Water Improvement District - James Tripp Reservoir (Northeast Water Reservoir), Tucson, AZ	2006	2008
	(3) BRIEF DESCRIPTION (Brief scope, size, cost, etc.) AND SPECIFIC ROLE Structural Engineer for a 5.0 MG buried AWWA, D110, Type 3 prestressed concrete reservoir, with sliding wall base on membrane base slab. Also included a separate buried metering vault and Control Building.	<input checked="" type="checkbox"/>	Check if project performed with current firm
3.	City of Bend, Surface Water Improvements Phase 2, Bend, OR	2012	2013
	(3) BRIEF DESCRIPTION (Brief scope, size, cost, etc.) AND SPECIFIC ROLE Structural Engineer of Record for the design of a new surface water membrane treatment plant (WTP), river intake facility, river crossing pipe bridge on a 9.65 mile long 36-inch diameter steel pipeline, and 1.6 megawatt hydroelectric power house.	<input checked="" type="checkbox"/>	Check if project performed with current firm
4.	Tucson Water, Reservoir and Tank Rehabilitation Program, Tucson, AZ	2011-Present	N/A
	(3) BRIEF DESCRIPTION (Brief scope, size, cost, etc.) AND SPECIFIC ROLE Structural Engineer or this multi-year program involving condition assessment, condition assessment, rehabilitation design, and construction administration for 34 concrete reservoirs and 34 steel storage tanks. Facilities to be rehabilitated under this program range from less than 1 MG to 60 MG in size and were constructed from 1950 to the present day. The program includes all potable and reclaimed water storage facilities within the Tucson Water system.	<input checked="" type="checkbox"/>	Check if project performed with current firm
5.	City of Anacortes, Water Treatment Plant Improvements - Phase III A, Anacortes, WA	2010	2011
	(3) BRIEF DESCRIPTION (Brief scope, size, cost, etc.) AND SPECIFIC ROLE Structural Engineer of Record for the planning and design of a new surface water treatment plant. The plant has a design production capacity of 42 mgd and a hydraulic capacity of 54 mgd.	<input checked="" type="checkbox"/>	Check if project performed with current firm



ATTACHMENT I – General Qualifications
ANNUAL REQUEST FOR QUALIFICATIONS AND EXPERIENCE NO:
ADSP015-00004729

STATE PROCUREMENT OFFICE
Department of Administration
100 North 15th Avenue, Suite 201
Phoenix, Arizona 85007

4. Resumes of Key Personnel Proposed for this Contract (Complete one Section 4 for each key person.)

a. NAME John Misik, PE	b. ROLE IN THIS CONTRACT Structural Engineering (Transportation) - Task Leader	c. YEARS EXPERIENCE	
		1. TOTAL 36	2. WITH CURRENT FIRM 9
d. LOCATION (City and State) Phoenix, Arizona			
e. EDUCATION (DEGREE AND SPECIALIZATION) BS, Civil Engineering		f. PROFESSIONAL TRAINING - REGISTRATIONS Professional Engineer (AZ #20475)	
g. OTHER PROFESSIONAL QUALIFICATIONS (Organizations, Awards, etc.) John has 36 years of experience as project manager and project engineer in the design of transportation structures and other civil related projects. His background also includes conceptual design studies, transit (light rail), and bridge design, responsibility for final plans, specifications and cost estimates, supervision of subconsultants, utility coordination and project budgets and schedules.			

H. RELEVANT PROJECTS

1.	(1) TITLE AND LOCATION (City and State) ADOT - Bridge Design & Drainage On-call, Statewide, AZ	(2) YEAR COMPLETED	
		Professional Services 2006-Present	Construction (if applicable) N/A
	(3) BRIEF DESCRIPTION (Brief scope, size, cost, etc.) AND SPECIFIC ROLE Contract/Project Manager for various bridge repair task orders through the On-call Highway Bridge and Drainage Design Services contract. The task orders have included structural assessments, in-depth inspections, project assessment reports, and final design plans and specifications.	<input checked="" type="checkbox"/> Check if project performed with current firm	
2.	(1) TITLE AND LOCATION (City and State) ADOT - On-Call Bridge Inspection, Statewide, AZ	(2) YEAR COMPLETED	
		Professional Services 2008-Present	Construction (if applicable) N/A
	(3) BRIEF DESCRIPTION (Brief scope, size, cost, etc.) AND SPECIFIC ROLE QC Reviewer performing in-depth inspections on steel and concrete I-girders and box girders, curved steel plate girders, steel arches, concrete and steel frames, concrete culverts, wooden and steel trusses, and cable supported structures throughout the state.	<input checked="" type="checkbox"/> Check if project performed with current firm	
3.	(1) TITLE AND LOCATION (City and State) ADOT- South Mountain Corridor Environmental Impact Statement and Location/Design Concept Report, Phoenix, AZ	(2) YEAR COMPLETED	
		Professional Services 2010-Present	Construction (if applicable) N/A
	(3) BRIEF DESCRIPTION (Brief scope, size, cost, etc.) AND SPECIFIC ROLE Structural Quality Control Reviewer for the assessment of the proposed 26-mile South Mountain Freeway Corridor, which consists of completing an EIS and Location/Design Concept Report for ADOT.	<input checked="" type="checkbox"/> Check if project performed with current firm	
4.	(1) TITLE AND LOCATION (City and State) ADOT - I-17/SR 69 Cordes Junction Traffic Interchange, Cordes Junction, AZ	(2) YEAR COMPLETED	
		Professional Services 2012	Construction (if applicable) 2013
	(3) BRIEF DESCRIPTION (Brief scope, size, cost, etc.) AND SPECIFIC ROLE Lead Structural Engineer for this project that improved the operational characteristics of the interchange and segregated local traffic from through traffic reducing congestion and delays. Included a new full diamond traffic interchange on the I-17 north of the existing interchange and a realignment of SR 69 to a half diamond interchange.	<input checked="" type="checkbox"/> Check if project performed with current firm	
5.	(1) TITLE AND LOCATION (City and State) Valley Metro Rail - Planning Support Services, Phoenix, AZ	(2) YEAR COMPLETED	
		Professional Services 2012-Present	Construction (if applicable) N/A
	(3) BRIEF DESCRIPTION (Brief scope, size, cost, etc.) AND SPECIFIC ROLE Structural Designer providing transportation system planning level corridor studies beyond the already approved 57 miles of light rail transit in the Phoenix Metropolitan area. Contract includes: I-10 West High Capacity Transit alignment study, and analysis of proposed Tempe, Glendale and Central/South Mountain corridors. The operational characters of the 57-mile system will be evaluated as part of a configuration study.	<input checked="" type="checkbox"/> Check if project performed with current firm	



ATTACHMENT I – General Qualifications
ANNUAL REQUEST FOR QUALIFICATIONS AND EXPERIENCE NO:
ADSPO15-00004729

STATE PROCUREMENT OFFICE
Department of Administration
100 North 15th Avenue, Suite 201
Phoenix, Arizona 85007

4. Resumes of Key Personnel Proposed for this Contract (Complete one Section 4 for each key person.)

a. NAME Mark Fountain, PE, CFM	b. ROLE IN THIS CONTRACT Drainage (Water Resources) - Task Leader	c. YEARS EXPERIENCE	
		1. TOTAL 12	2. WITH CURRENT FIRM 8
d. LOCATION (City and State) Phoenix, Arizona			
e. EDUCATION (DEGREE AND SPECIALIZATION) BS, Civil Engineering		f. PROFESSIONAL TRAINING - REGISTRATIONS Professional Engineer (AZ #52498); ISI Envision Sustainability Professional; Certified Floodplain Manager	
g. OTHER PROFESSIONAL QUALIFICATIONS (Organizations, Awards, etc.) Mark is a water resources project manager who provides technical project assistance and expertise on a wide range of projects. He has been involved in numerous water resource engineering projects in both management and support roles. He has been responsible for preparing several FEMA FIS submittals and performing hydraulic studies as part of LOMR and CLOMR submittals.			

H. RELEVANT PROJECTS

1.	(1) TITLE AND LOCATION (City and State) ADOT- South Mountain Corridor Environmental Impact Statement and Location/Design Concept Report, Phoenix, AZ	(2) YEAR COMPLETED	
		Professional Services 2010-Present	Construction (if applicable) N/A
	(3) BRIEF DESCRIPTION (Brief scope, size, cost, etc.) AND SPECIFIC ROLE Project Designer responsible for preparation of updated HEC-1 hydrologic models based on the existing ADMP and the selected alternative for freeway alignment through the Durango basin, Laveen basin and Ahwatukee Foothills basin. Responsibilities included coordination with local municipalities and the Gila River Indian Community (GRIC), preparation of preliminary design plans for the proposed freeway channel, box culverts, and retention basins.	<input checked="" type="checkbox"/> Check if project performed with current firm	
2.	(1) TITLE AND LOCATION (City and State) Flood Control District of Maricopa County - Chandler/Gilbert Floodplain Delineation Study	(2) YEAR COMPLETED	
		Professional Services 2009	Construction (if applicable) N/A
	(3) BRIEF DESCRIPTION (Brief scope, size, cost, etc.) AND SPECIFIC ROLE Project Designer responsible for performing a detailed GIS QC review of the proposed HIS hydrology and hydraulics deliverable for the Chandler Gilbert FDS Phase 1 study area for FCDMC.	<input checked="" type="checkbox"/> Check if project performed with current firm	
3.	(1) TITLE AND LOCATION (City and State) Flood Control District of Maricopa County - Guadalupe FRS Gatehouse and Principal Spillway Outlet Alternatives Investigation, Phoenix, AZ	(2) YEAR COMPLETED	
		Professional Services 2014	Construction (if applicable) N/A
	(3) BRIEF DESCRIPTION (Brief scope, size, cost, etc.) AND SPECIFIC ROLE Project Engineer/Task Lead for hydrologic and hydraulic evaluations of the Guadalupe Flood Retarding Structure, gatehouse/intake structure, and principal spillway outlet.	<input checked="" type="checkbox"/> Check if project performed with current firm	
4.	(1) TITLE AND LOCATION (City and State) USACE - Fort Worth District - Ajo Border Patrol Station, Why (Rocky Point Junction), AZ	(2) YEAR COMPLETED	
		Professional Services 2009	Construction (if applicable) 2012
	(3) BRIEF DESCRIPTION (Brief scope, size, cost, etc.) AND SPECIFIC ROLE Stormwater Drainage Designer for the design of a major expansion of the new Ajo Border Patrol facility located on a 41-acre site. The stormwater permitting work included the development of a site specific Stormwater Pollution Prevention Plan (SWPPP) according to the Arizona Pollutant Discharge Elimination System (AZPDES) regulations.	<input checked="" type="checkbox"/> Check if project performed with current firm	
5.	(1) TITLE AND LOCATION (City and State) Walton International Group, Inc. - McClellan Wash Watercourse Master Plan, Eloy, AZ.	(2) YEAR COMPLETED	
		Professional Services 2012	Construction (if applicable) N/A
	(3) BRIEF DESCRIPTION (Brief scope, size, cost, etc.) AND SPECIFIC ROLE Project Engineer providing support services for hydrology and hydraulics to establish a watercourse master plan that can be used for future planning associated with development, land use, and right-of-way in the McClellan Wash drainage area.	<input checked="" type="checkbox"/> Check if project performed with current firm	



ATTACHMENT I – General Qualifications

**ANNUAL REQUEST FOR QUALIFICATIONS AND EXPERIENCE NO:
ADSP015-00004729**

**STATE PROCUREMENT OFFICE
Department of Administration
100 North 15th Avenue, Suite 201
Phoenix, Arizona 85007**

4. Resumes of Key Personnel Proposed for this Contract (Complete one Section 4 for each key person.)

a. NAME	b. ROLE IN THIS CONTRACT	c. YEARS EXPERIENCE	
Terri Bainbridge, PE, CFM	Drainage (Transportation) - Task Leader	1. TOTAL 37	2. WITH CURRENT FIRM 27
d. LOCATION (City and State) Tucson, Arizona			
e. EDUCATION (DEGREE AND SPECIALIZATION) BS, Geological Engineering		f. PROFESSIONAL TRAINING - REGISTRATIONS Professional Engineer (AZ #24383) Certified Floodplain Manager	
g. OTHER PROFESSIONAL QUALIFICATIONS (Organizations, Awards, etc.) Terri Bainbridge has 27 years of transportation engineering experience specifically in hydrology, hydraulics, and drainage. She has experience using HEC-RAS, HEC-2, FLO-2D, HEC-1, and other computer models, and is knowledgeable in FEMA requirements. She has been involved in a number of major projects for City of Tucson, Pima County, and ADOT and is often called upon by clients and competitors to provide drainage expertise.			

H. RELEVANT PROJECTS

1.	(1) TITLE AND LOCATION (City and State) ADOT - I-19 Duval Mine Road Traffic Interchange, Sahuarita, AZ	(2) YEAR COMPLETED	
		Professional Services 2009	Construction (if applicable) N/A
	(3) BRIEF DESCRIPTION (Brief scope, size, cost, etc.) AND SPECIFIC ROLE Drainage Engineer. Prepared or supervised hydrologic and hydraulic analysis and design. The project improved the traffic flow and capacity of Duval Mine Road and ramps at the I-19 interchange. This project also required special cross-drainage measures and 404 permitting. An especially extensive public outreach effort was undertaken to deal with the active and assertive communities of Sahuarita and Green Valley.	<input checked="" type="checkbox"/> Check if project performed with current firm	
2.	(1) TITLE AND LOCATION (City and State) City of Tucson - Speedway Boulevard, Camino Seco to Houghton, Tucson, AZ	(2) YEAR COMPLETED	
		Professional Services 2013	Construction (if applicable) 2013
	(3) BRIEF DESCRIPTION (Brief scope, size, cost, etc.) AND SPECIFIC ROLE Project Manager. The project involves reconstructing 2 miles of Speedway Boulevard to a four-lane divided urban arterial roadway with curbs and sidewalk. The project includes design of the new roadway, 12 cross drainage structures, pavement drainage, signing & marking, lighting & traffic signals, stormwater pollution prevention plans, environmental work, utility relocations including design of a joint use trench, and landscaping Terri served as HDR's project manager, the City of Tucson's project manager, the drainage designer, and the roadway designer.	<input checked="" type="checkbox"/> Check if project performed with current firm	
3.	(1) TITLE AND LOCATION (City and State) City of Tucson - Silverbell Road, Grant Road to Ina Road, Tucson, AZ	(2) YEAR COMPLETED	
		Professional Services 2014	Construction (if applicable) N/A
	(3) BRIEF DESCRIPTION (Brief scope, size, cost, etc.) AND SPECIFIC ROLE Project Manager for a Design Concept Report that addresses elements associated with the widening of Silverbell Road including alignment, right-of-way acquisition areas, drainage conveyance issues, an access control plan, and traffic analyses. HDR is a subconsultant on this project.	<input checked="" type="checkbox"/> Check if project performed with current firm	
4.	(1) TITLE AND LOCATION (City and State) Pima County Department of Transportation - La Canada Drive, Ina to Calle Concordia, Tucson, AZ	(2) YEAR COMPLETED	
		Professional Services 2012	Construction (if applicable) 2013
	(3) BRIEF DESCRIPTION (Brief scope, size, cost, etc.) AND SPECIFIC ROLE Drainage Project Engineer for a project that widened over three miles of La Canada Drive from a rural two-lane section to a four-lane urban section south of Ina Road to Calle Concordia with paved shoulders, curb and gutter, sidewalks and a public use trail. These improvements accommodate increased traffic demands in the area through 2030; improve vehicular, pedestrian, bicycle and equestrian safety; and provide a key north-south, all-weather route for residents, commuters and emergency service providers.	<input checked="" type="checkbox"/> Check if project performed with current firm	



ATTACHMENT I – General Qualifications

ANNUAL REQUEST FOR QUALIFICATIONS AND EXPERIENCE NO:
ADSP015-00004729

STATE PROCUREMENT OFFICE
Department of Administration
100 North 15th Avenue, Suite 201
Phoenix, Arizona 85007

5.	(1) TITLE AND LOCATION (<i>City and State</i>) Pima County Department of Transportation - La Cholla Boulevard, Ruthrauff to River, Tucson, AZ.	(2) YEAR COMPLETED	
		Professional Services 2011	Construction (if applicable) N/A
	(3) BRIEF DESCRIPTION (<i>Brief scope, size, cost, etc.</i>) AND SPECIFIC ROLE Drainage Project Engineer. The purpose of the project was to widen La Cholla Boulevard to a six-lane divided roadway fom Ruthrauff Road to River Road in order to improve safety, reduce congestion, improve operations and increase mobility. Ms. Bainbridge performed the hydraulic analysis (HEC-RAS) for the Rillito River. She ran the FEMA model, updated the model for existing deficiencies, and evaluated several configurations for the new bridge. She also provided quality control reviews on the drainage report.	<input checked="" type="checkbox"/> Check if project performed with current firm	



ATTACHMENT I – General Qualifications
ANNUAL REQUEST FOR QUALIFICATIONS AND EXPERIENCE NO:
ADSP015-00004729

STATE PROCUREMENT OFFICE
Department of Administration
100 North 15th Avenue, Suite 201
Phoenix, Arizona 85007

4. Resumes of Key Personnel Proposed for this Contract (Complete one Section 4 for each key person.)

a. NAME Scott Sikel, PE	b. ROLE IN THIS CONTRACT Aviation/Aeronautical	c. YEARS EXPERIENCE	
		1. TOTAL 24	2. WITH CURRENT FIRM 1

d. LOCATION (City and State) **Phoenix, Arizona**

e. EDUCATION (DEGREE AND SPECIALIZATION)
BS, Civil Engineering

f. PROFESSIONAL TRAINING - REGISTRATIONS
Professional Engineer (AZ #31385)

g. OTHER PROFESSIONAL QUALIFICATIONS (Organizations, Awards, etc.)

Scott Sikel brings over 23 years experience in a wide variety of aviation/civil engineering-related projects ranging from large-scale international airports such as Phoenix Sky Harbor, to mid-sized airports such as Scottsdale Municipal Airport to smaller General Aviation airports such as Marana Regional and Phoenix Goodyear Airport. His technical expertise includes the preparation of construction plans and specifications, construction phasing, and construction administration. Scott has performed pavement design and drainage design and has held responsible roles during the construction phase of various projects. He understands how to take design drawings and implement those in the field during construction. As a Project Manager, he provides continuity from design through construction to ensure a quality product.

H. RELEVANT PROJECTS

1.	(1) TITLE AND LOCATION (City and State) Taxiway B8 Reconstruction, Phoenix Sky Harbor International Airport, Phoenix, AZ	(2) YEAR COMPLETED	
	(3) BRIEF DESCRIPTION (Brief scope, size, cost, etc.) AND SPECIFIC ROLE Project Manager responsible for the preparation of construction documents for the removal and reconstruction of this taxiway. Based on the condition of the PCCP pavement, the Aviation Department elected to demolish the entire taxiway connector between Runway 8-26 and Taxiway B. This project required conducting a site survey of the project area, performing civil and electrical design, and submitting sealed construction plans and technical specifications. Work associated with this project included full depth pavement removal, PCCP reconstruction, airfield lighting, FAA status lighting, pavement grooving, pavement markings, as-built preparation, project close-out and final acceptance.	Professional Services 2012	Construction (if applicable) 2012
<input type="checkbox"/> Check if project performed with current firm			
2.	(1) TITLE AND LOCATION (City and State) Taxiway A Intersections Improvements - Phases 2/3; Phoenix-Goodyear Airport, Goodyear, AZ	(2) YEAR COMPLETED	
	(3) BRIEF DESCRIPTION (Brief scope, size, cost, etc.) AND SPECIFIC ROLE Design Project Manager for the last 2 phases of the Taxiway A Intersection improvements project. Responsible for preparing construction documents, and ensuring that construction was performed to the requirements of the technical specifications. This project included the preparation of construction plans for modifications to three intersections for Taxiway A at Phoenix Goodyear Airport. Phases 2 and 3 include 100% design documents and construction administration of two acute angle taxiway exits.	Professional Services 2011	Construction (if applicable) 2012
<input type="checkbox"/> Check if project performed with current firm			
3.	(1) TITLE AND LOCATION (City and State) Miscellaneous Pavement Reconstruction, Scottsdale Airport, Scottsdale, AZ	(2) YEAR COMPLETED	
	(3) BRIEF DESCRIPTION (Brief scope, size, cost, etc.) AND SPECIFIC ROLE Project Manager for the reconstruction of various segments of airfield and service road pavement. The project relocated the existing service road in two separate areas as well as reconstructed the entrance connectors for 5 separate aircraft hangars (Greenway Hangars). Phased construction plans were necessary in order to reconstruct the Greenway hangars without restricting access to any hangar at any time.	Professional Services 2008	Construction (if applicable) 2008
<input type="checkbox"/> Check if project performed with current firm			
4.	(1) TITLE AND LOCATION (City and State) Airport Improvements, Winslow-Lindbergh Regional Airport, Winslow, AZ	(2) YEAR COMPLETED	
	(3) BRIEF DESCRIPTION (Brief scope, size, cost, etc.) AND SPECIFIC ROLE	Professional Services 2004	Construction (if applicable) 2004
<input type="checkbox"/> Check if project performed with current firm			



ATTACHMENT I – General Qualifications

**ANNUAL REQUEST FOR QUALIFICATIONS AND EXPERIENCE NO:
ADSP015-00004729**

**STATE PROCUREMENT OFFICE
Department of Administration
100 North 15th Avenue, Suite 201
Phoenix, Arizona 85007**

	<p>(3) BRIEF DESCRIPTION (<i>Brief scope, size, cost, etc.</i>) AND SPECIFIC ROLE Senior Civil Engineer responsible for the production of plans, specifications, and estimates for the reconstruction of terminal taxiways and the terminal apron; pavement preservation using crack seal and slurry seal on Runway 11/29, Runway 4/22, Taxiway A, and Taxiway B; and pavement markings. Work included performing a runway safety area (RSA) inventory and updating the ALP. Also provided assistance to the City during the bid phase and administration, inspection, staking, and close-out services during the construction phase.</p>	<input type="checkbox"/> Check if project performed with current firm		
5.	<p>(1) TITLE AND LOCATION (<i>City and State</i>) Federal Transit Authority/Valley Metro Rail, Project Management Over-Site, Phoenix, Arizona</p> <p>(3) BRIEF DESCRIPTION (<i>Brief scope, size, cost, etc.</i>) AND SPECIFIC ROLE Local PMOC Representative. Scott was responsible for many tasks associated with procedure adherence, design review, Project Management Plan, and Safety & Security System Plan implementation. Responsibilities included continually monitoring performance and status of many of the tasks required and advised the FTA, as necessary, of any concerns or deficiencies by Valley Metro Rail.</p>	<p>(2) YEAR COMPLETED</p> <table border="1"> <tr> <td data-bbox="974 525 1266 808">Professional Services 2010</td> <td data-bbox="1266 525 1521 808">Construction (if applicable) N/A</td> </tr> </table> <p><input type="checkbox"/> Check if project performed with current firm</p>	Professional Services 2010	Construction (if applicable) N/A
Professional Services 2010	Construction (if applicable) N/A			



ATTACHMENT I – General Qualifications
ANNUAL REQUEST FOR QUALIFICATIONS AND EXPERIENCE NO:
ADSP015-00004729

STATE PROCUREMENT OFFICE
Department of Administration
100 North 15th Avenue, Suite 201
Phoenix, Arizona 85007

4. Resumes of Key Personnel Proposed for this Contract (Complete one Section 4 for each key person.)

a. NAME Chad McDermott, PE	b. ROLE IN THIS CONTRACT Construction Management	c. YEARS EXPERIENCE	
		1. TOTAL 23	2. WITH CURRENT FIRM 13

d. LOCATION (City and State) **Phoenix, Arizona**

e. EDUCATION (DEGREE AND SPECIALIZATION)
BS, Civil Engineering

f. PROFESSIONAL TRAINING - REGISTRATIONS
Professional Engineer (AZ #53949)
ATSSA Certified Traffic Control Supervisor

g. OTHER PROFESSIONAL QUALIFICATIONS (Organizations, Awards, etc.)

Chad McDermott has 22 years of experience in construction management in which he has been instrumental in recommending and coordinating unique approaches that incorporate innovative construction management techniques to finalize projects on schedule and within budget. He has extensive experience working on various types of projects ranging from flood control and water/wastewater treatment to transportation projects. Chad has a keen ability to utilize a partnering approach with both clients and contractors to complete projects to the satisfaction of the client. He is currently serving as the Department Manager in Arizona for HDR Construction Control Corporation.

H. RELEVANT PROJECTS

1.	(1) TITLE AND LOCATION (City and State) ADOT - Temporary Technical Engineering Personnel for Construction Projects Statewide (2011-2014)	(2) YEAR COMPLETED	
		Professional Services 2011-Present	Construction (if applicable) N/A
	(3) BRIEF DESCRIPTION (Brief scope, size, cost, etc.) AND SPECIFIC ROLE Contract Manager. HDR provides field technical staff on an as-needed basis for ADOT-managed highway construction projects. HDR provides specific employees to supplement ADOT positions when ADOT is short-staffed, such as resident engineers, inspectors, field office administrator/managers, materials inspectors, testers, and samplers, and documentation personnel. Assignments vary from one week to two years and are in both rural and urban settings in ADOT's nine Districts.	<input checked="" type="checkbox"/> Check if project performed with current firm	
2.	(1) TITLE AND LOCATION (City and State) Phoenix Sky Train Emergency Repair Design & Construction Support Services at Phoenix Sky Harbor International Airport, Phoenix, AZ	(2) YEAR COMPLETED	
		Professional Services 2013	Construction (if applicable) 2013
	(3) BRIEF DESCRIPTION (Brief scope, size, cost, etc.) AND SPECIFIC ROLE Construction Project Manager. HDR provided inspection services during the demolition and installation of the Phoenix Sky Train running surface expansion joint ride plates. Chad was responsible for all oversight inspection during demolition and construction, including the daily coordination of inspections, in addition to the review and approval of weekly submittal of all inspection documentation to the client. Construction consisted of the demolition and reconstruction of 305 expansion joint ride plates on approximately 2.5 miles of track from the 44th Street Station to Terminal 4. Throughout the demolition process, HDR inspectors were responsible for photo documentation of pre-demolition inspection of all the running surface expansion joint ride plates, inspecting the existing rebar, checking for voids in the concrete, inspection of all steel embeds, as well as the preparation and submittal of all demolition reports. During reconstruction, HDR inspectors were responsible for photo documentation of the construction of the running surface expansion joint ride plates, including inspection of drill and epoxy of embedded dowels into the deck, rebar placement, inspection of all formwork and ride plate embed placement, placement and finishing of concrete while maintaining surface tolerances within 1/16" to 1/8", in addition to the preparation and submittal of all ride plate reconstruction reports.	<input checked="" type="checkbox"/> Check if project performed with current firm	
3.	(1) TITLE AND LOCATION (City and State) Flood Control District of Maricopa Count - Buckeye Flood Retarding Structure (FRS) No. 1 Rehabilitation, Phoenix, AZ	(2) YEAR COMPLETED	
		Professional Services 2013	Construction (if applicable) 2014
	(3) BRIEF DESCRIPTION (Brief scope, size, cost, etc.) AND SPECIFIC ROLE Project Manager. This CMAR dam project is Phase 1 of the Buckeye FRS No. 1 Rehabilitation project and includes trenching up to 40 feet deep to install a three-	<input checked="" type="checkbox"/> Check if project performed with current firm	



ATTACHMENT I – General Qualifications

ANNUAL REQUEST FOR QUALIFICATIONS AND EXPERIENCE NO:
ADSP015-00004729

STATE PROCUREMENT OFFICE
Department of Administration
100 North 15th Avenue, Suite 201
Phoenix, Arizona 85007

foot wide, 14,080 foot long sand filter in the FRS to eliminate or mitigate current dam safety deficiencies and failure modes in an existing earthen flood control embankment west of Phoenix, AZ. A geotextile will be placed on the downstream side of the filter. New O&M access ramps will be installed on both sides of the dam at approximately the midpoint between Johnson Road and the west end of the FRS. Secondary project features include improvements to existing O&M roads on both sides of the dam, landscaping, improving aesthetics, and providing multi-use opportunities near the dam.

4.	(1) TITLE AND LOCATION (<i>City and State</i>) City of Scottsdale, Scottsdale / McDowell Transit Facility Construction Administration, Scottsdale, AZ	(2) YEAR COMPLETED	
		Professional Services N/A	Construction (if applicable) 2013
	(3) BRIEF DESCRIPTION (<i>Brief scope, size, cost, etc.</i>) AND SPECIFIC ROLE Contract Manager. HDR is providing full construction administration for the City of Scottsdale streetscape projects that includes removing the existing one-bus capacity bus bays south of McDowell Road on Scottsdale Road and replacing with three-bus capacity bus bays with new shelter canopies and other features.	<input checked="" type="checkbox"/> Check if project performed with current firm	
5.	(1) TITLE AND LOCATION (<i>City and State</i>) Nevada DOT - US 95 to Summerlin Parkway HOV Flyover	(2) YEAR COMPLETED	
		Professional Services 2011	Construction (if applicable) 2012
	(3) BRIEF DESCRIPTION (<i>Brief scope, size, cost, etc.</i>) AND SPECIFIC ROLE Project Manager. The project consisted of constructing an HOV lane from Northbound US 95 to Westbound Summerlin Parkway including a partial widening of Summerlin Parkway. Construction included a 12-span, 2,300' curved, steel plate girder bridge with associated spread footings, pier columns, and retaining walls. The bridge is a third level structure over the US 95/Rainbow Boulevard interchange. HDR also provided critical traffic control coordination with the adjacent contract on the US 95 widening project.	<input checked="" type="checkbox"/> Check if project performed with current firm	



ATTACHMENT I – General Qualifications
ANNUAL REQUEST FOR QUALIFICATIONS AND EXPERIENCE NO:
ADSP015-00004729

STATE PROCUREMENT OFFICE
Department of Administration
100 North 15th Avenue, Suite 201
Phoenix, Arizona 85007

4. Resumes of Key Personnel Proposed for this Contract (Complete one Section 4 for each key person.)

a. NAME Gregg Mitchell, PG	b. ROLE IN THIS CONTRACT Geotechnical / Geological	c. YEARS EXPERIENCE	
		1. TOTAL 26	2. WITH CURRENT FIRM 8

d. LOCATION (City and State) **Phoenix, Arizona**

e. EDUCATION (DEGREE AND SPECIALIZATION)
BS, Environmental Technology
Associate of Arts, Liberal Arts/Sciences

f. PROFESSIONAL TRAINING - REGISTRATIONS
Registered Professional Geologist (AZ #47555)

g. OTHER PROFESSIONAL QUALIFICATIONS (Organizations, Awards, etc.)

Gregg is an engineering and environmental geologist with 26 years of experience in geotechnical and environmental consulting including scope of work development, proposal preparation, site reconnaissance and field investigation, engineering and regulatory report preparation, project management, and regulatory agency liaison. His experience includes: geotechnical/geologic investigations for highways and roadways, bridges, railroads, mine sites, dams, tunnels, infrastructure, airport runways and air traffic control towers, and commercial and institutional building structures; CQA monitoring, inspection, and management for dams and landfill liner systems; preparation of high-level to detailed impact and analysis documents including EIS and critical issues analyses (CIA) for transportation and alternative energy planning projects; environmental remediation and site characterization including soil and groundwater investigations for CERCLA/RCRA sites, industrial facility closures, landfills, and leaking underground storage tank sites; and, solid waste engineering including landfill siting, permitting, closure, and Subtitle D environmental monitoring.

H. RELEVANT PROJECTS

	(1) TITLE AND LOCATION (City and State)	(2) YEAR COMPLETED	
		Professional Services	Construction (if applicable)
1.	ADOT - Bridge Design & Drainage On-call, Statewide, AZ	2008-Present	N/A
	(3) BRIEF DESCRIPTION (Brief scope, size, cost, etc.) AND SPECIFIC ROLE Geotechnical Investigator assisting ADOT with various bridge repair task orders through the On-call Highway Bridge and Drainage Design Services Contract. Repair work has included assessments, in-depth inspections, project assessment reports, and final design plans and specifications.	<input checked="" type="checkbox"/>	Check if project performed with current firm
2.	ADOT - South Mountain Corridor Environmental Impact Statement and Location/Design Concept Report, Phoenix, AZ	2010-Present	N/A
	(3) BRIEF DESCRIPTION (Brief scope, size, cost, etc.) AND SPECIFIC ROLE Engineering Geologist for the assessment of the proposed 26-mile South Mountain Freeway Corridor, which consists of completing an EIS and Location/Design Concept Report for ADOT.	<input checked="" type="checkbox"/>	Check if project performed with current firm
3.	ADOT - North-South Corridor Study Environmental Impact Statement and Location/Design Concept Report, AZ	2010-Present	N/A
	(3) BRIEF DESCRIPTION (Brief scope, size, cost, etc.) AND SPECIFIC ROLE Geotechnical Engineer providing environmental services and evaluating alternatives for the proposed North-South Freeway in Pinal County from US 60 South to I-10. Alternatives will include tolling and Public Private Partnerships as a potential funding source.	<input checked="" type="checkbox"/>	Check if project performed with current firm
4.	ADOT - I-17/SR 69 Cordes Junction Traffic Interchange, Cordes Junction, AZ	2010	2013
	(3) BRIEF DESCRIPTION (Brief scope, size, cost, etc.) AND SPECIFIC ROLE Engineering Geologist who prepared the quantitative estimate of potential for scour at bridge piers using the Erodibility Index Method by Annandale, which involved determining the erodibility index for the rock mass comprising the Big Bug Creek active channel at the I-17 Bridges, and prepared the evaluation of potential for scour report for the project. The project is designed to improve the capacity, geometrics, safety, and operational characteristics of the	<input checked="" type="checkbox"/>	Check if project performed with current firm



ATTACHMENT I – General Qualifications

ANNUAL REQUEST FOR QUALIFICATIONS AND EXPERIENCE NO:
ADSP015-00004729

STATE PROCUREMENT OFFICE
Department of Administration
100 North 15th Avenue, Suite 201
Phoenix, Arizona 85007

interchange at I-17 and SR-69 (Cordes Junction). Project improvements include adding width to the existing northbound (NB) Big Bug Bridge, which is a 3-span steel girder bridge.

(1) TITLE AND LOCATION (*City and State*)

USACE Los Angeles District - Rio Salado Oeste (Salt River) Restoration Project, Phoenix, AZ

(2) YEAR COMPLETED

Professional Services
2009

Construction (if applicable)
2010

5.

(3) BRIEF DESCRIPTION (*Brief scope, size, cost, etc.*) AND SPECIFIC ROLE

Engineering Geologist for a large river restoration project along the Salt River in central Arizona. The project included client management, technical team management, subcontractor management, budgeting, scheduling, and project delivery. The project involves the conceptual design of water supply and distribution, habitat restoration, public and transportation access, recreation, and flood control.

Check if project performed with current firm



ATTACHMENT I – General Qualifications
ANNUAL REQUEST FOR QUALIFICATIONS AND EXPERIENCE NO:
ADSP015-00004729

STATE PROCUREMENT OFFICE
Department of Administration
100 North 15th Avenue, Suite 201
Phoenix, Arizona 85007

4. Resumes of Key Personnel Proposed for this Contract (Complete one Section 4 for each key person.)

a. NAME Kelly Kading, CPG	b. ROLE IN THIS CONTRACT Hazmat	c. YEARS EXPERIENCE	
		1. TOTAL 31	2. WITH CURRENT FIRM 10

d. LOCATION (City and State) **Phoenix, Arizona**

e. EDUCATION (DEGREE AND SPECIALIZATION)
BS, Geology

f. PROFESSIONAL TRAINING - REGISTRATIONS
Certified Professional Geologist

g. OTHER PROFESSIONAL QUALIFICATIONS (Organizations, Awards, etc.)

Kelly Kading has 25 years of experience in hazardous materials assessment and remediation, transportation corridor assessment, NEPA coordination, and project and program management. He performs hazardous materials assessments of transportation corridor projects as well as Phase I and Phase II Assessments, up to and including recommendations for mitigation or remediation measures. He is also well versed in the preparation of NEPA documentation on sensitive transportation projects. He is knowledgeable in federal and state regulatory requirements. He serves as HDR's national leader of the Phase I Best Practices Team, and provides Phase I training to all HDR Phase I practitioners nationwide.

H. RELEVANT PROJECTS

1.	(1) TITLE AND LOCATION (City and State) ADOT - Environmental On-Call	(2) YEAR COMPLETED	
		Professional Services 2006-Present	Construction (if applicable) N/A
	(3) BRIEF DESCRIPTION (Brief scope, size, cost, etc.) AND SPECIFIC ROLE Hazardous materials assessment for statewide environmental on-call services including a wide variety of technical studies in support of NEPA documentation. To date, Mr. Kading has managed over 100 hazardous materials studies for ADOT ranging from basic risk-analysis PISA's to intrusive PSI investigations in support of litigation. He has also assisted ADOT with preparation and refinement of internal standards and protocols for the performance of hazardous materials investigations.	<input checked="" type="checkbox"/> Check if project performed with current firm	
2.	(1) TITLE AND LOCATION (City and State) ADOT - SR 30 (formerly SR 801) East DCR/EA, SR 303L to SR 202L, Phoenix, AZ	(2) YEAR COMPLETED	
		Professional Services 2012	Construction (if applicable) N/A
	(3) BRIEF DESCRIPTION (Brief scope, size, cost, etc.) AND SPECIFIC ROLE Hazardous materials assessment providing engineering and environmental documents for the proposed SR 30 freeway between SR 303 and SR 202L, which is approximately 26 miles long, in the southwest part of the Phoenix Valley traversing 5 local jurisdictions. Specific tasks include the preparation of a Corridor Alternative Selection Report (ASR), three System Interchange Selection Reports, a Location/Design Concept Report (L/DCR), two Environmental Assessments (EA), and 30% preliminary engineering documents. Hazardous materials analysis included assessment of all potential corridors for constraints related to hazardous materials releases.	<input checked="" type="checkbox"/> Check if project performed with current firm	
3.	(1) TITLE AND LOCATION (City and State) ADOT - Transportation Enhancement and Scenic Roads On-Call, Statewide, AZ	(2) YEAR COMPLETED	
		Professional Services 2006-2010	Construction (if applicable) N/A
	(3) BRIEF DESCRIPTION (Brief scope, size, cost, etc.) AND SPECIFIC ROLE Hazardous materials assessment for on-call services contract including a wide variety of technical studies in support of NEPA documentation. Kelly has managed hazardous materials studies ranging from basic risk-analysis PISA's to intrusive PSI investigations in support of litigation.	<input checked="" type="checkbox"/> Check if project performed with current firm	
4.	(1) TITLE AND LOCATION (City and State) Element Power US, LLC, Renewable Energy (Utility Scale Solar) Permitting, Engineering Design and Site Development, AZ	(2) YEAR COMPLETED	
		Professional Services 2010	Construction (if applicable) N/A
	(3) BRIEF DESCRIPTION (Brief scope, size, cost, etc.) AND SPECIFIC ROLE Hazardous materials reviewer for the development of a solar energy project on a 1,500-acre privately owned parcel. The project required a Maricopa County Comprehensive Plan Amendment (CPA), and a Special Use Permit (SUP).	<input checked="" type="checkbox"/> Check if project performed with current firm	



ATTACHMENT I – General Qualifications

**ANNUAL REQUEST FOR QUALIFICATIONS AND EXPERIENCE NO:
ADSP015-00004729**

**STATE PROCUREMENT OFFICE
Department of Administration
100 North 15th Avenue, Suite 201
Phoenix, Arizona 85007**

4. Resumes of Key Personnel Proposed for this Contract (Complete one Section 4 for each key person.)

a. NAME Frank Abell, RLS	b. ROLE IN THIS CONTRACT Survey	c. YEARS EXPERIENCE	
		1. TOTAL 33	2. WITH CURRENT FIRM 31

d. LOCATION (City and State) **Tucson, Arizona**

e. EDUCATION (DEGREE AND SPECIALIZATION)
Associate of Engineering, Survey Technician

f. PROFESSIONAL TRAINING - REGISTRATIONS

Registered Professional Land Surveyor, Arizona, No. 18211

g. OTHER PROFESSIONAL QUALIFICATIONS (Organizations, Awards, etc.)

Frank has 33 years of survey experience, 31 of which with HDR. He has served as our Field Services Manager since 1985 and has directed all of our survey since that time. That includes the survey and right-of-way activity for more than 50 major roadway projects and countless other smaller projects. These efforts have included execution of construction layout, right-of-way and property layout, aerial ground control surveys, detailed design surveys, boundary/right-of-way surveys, property surveys, and a wide variety of improvement projects including interstate highways, arterial roadways, local roadways, utility relocation, bridges, traffic interchanges, railroads, streetcar, underpasses, and so forth in both rural and urban settings.

H. RELEVANT PROJECTS

1.	(1) TITLE AND LOCATION (City and State) ADOT - On-Call Survey Services for ADOT Highway Design Projects, Statewide, AZ	(2) YEAR COMPLETED	
		Professional Services 2011-Present	Construction (if applicable) N/A
	(3) BRIEF DESCRIPTION (Brief scope, size, cost, etc.) AND SPECIFIC ROLE Contract Manager providing field survey services through the ADOT Engineering Survey Section (ESS) in support of roadway studies, designs, and other improvements.	<input checked="" type="checkbox"/> Check if project performed with current firm	
2.	(1) TITLE AND LOCATION (City and State) ADOT - Development On-Call, Statewide, AZ	(2) YEAR COMPLETED	
		Professional Services 2014-Present	Construction (if applicable) N/A
	(3) BRIEF DESCRIPTION (Brief scope, size, cost, etc.) AND SPECIFIC ROLE Survey Task Leader for this on-call contract to provide as-needed development services serving a number of departments in ADOT.	<input checked="" type="checkbox"/> Check if project performed with current firm	
3.	(1) TITLE AND LOCATION (City and State) ADOT - On Call Right of Way Survey and Right of Way Plans, Statewide, AZ	(2) YEAR COMPLETED	
		Professional Services 2012-Present	Construction (if applicable) N/A
	(3) BRIEF DESCRIPTION (Brief scope, size, cost, etc.) AND SPECIFIC ROLE Contract Manager assisting ADOT Right of Way Plans Section by identifying existing rights of way, surveying the existing monumentation, and documenting these findings with the Results of Survey drawings.	<input checked="" type="checkbox"/> Check if project performed with current firm	
4.	(1) TITLE AND LOCATION (City and State) Tucson Water, Various Well Sites, Tucson Water, Tucson, AZ	(2) YEAR COMPLETED	
		Professional Services 2012-Present	Construction (if applicable) N/A
	(3) BRIEF DESCRIPTION (Brief scope, size, cost, etc.) AND SPECIFIC ROLE This on-going project involves the survey of different well sites owned by the City. Most of these parcels have never been surveyed and many have been owned by the City for at least 50 years.	<input checked="" type="checkbox"/> Check if project performed with current firm	
5.	(1) TITLE AND LOCATION (City and State) City of Tucson - On-Call Survey Services	(2) YEAR COMPLETED	
		Professional Services 2011-Present	Construction (if applicable) N/A
	(3) BRIEF DESCRIPTION (Brief scope, size, cost, etc.) AND SPECIFIC ROLE Contract Manager providing for all aerial and ground survey work for property surveys, roadway and other construction surveys, layout services, engineering, parcel, easement, right-of-way, and A.L.T.A. surveys, calculations, drafting, monumentation, preparation of legal descriptions and exhibits, and other professional tasks associated with the maintenance, acquisition, or disposition of City-owned property.	<input checked="" type="checkbox"/> Check if project performed with current firm	



ATTACHMENT I – General Qualifications
ANNUAL REQUEST FOR QUALIFICATIONS AND EXPERIENCE NO:
ADSP015-00004729

STATE PROCUREMENT OFFICE
Department of Administration
100 North 15th Avenue, Suite 201
Phoenix, Arizona 85007

5. EXAMPLE PROJECTS WHICH BEST ILLUSTRATE PROPOSED TEAM'S QUALIFICATIONS FOR THIS CONTRACT

(Present no more than five (5) projects. Complete one Section 5 for each project.)

a. TITLE AND LOCATION <i>(City and State)</i> Engineering Services for the State Capital Emergency Generator Evaluations and Utility Mapping	b. YEAR COMPLETED	
	PROFESSIONAL SERVICES 2014	CONSTRUCTION <i>(If applicable)</i> N/A

23. PROJECT OWNER'S INFORMATION

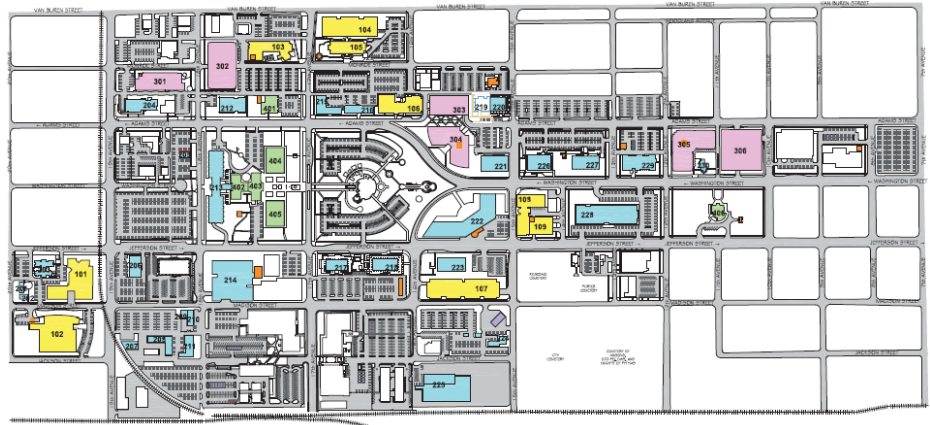
c. PROJECT OWNER Arizona Department of Administration	d. ORIGINAL BUDGET/NTE AMOUNT OF PROJECT \$212K	e. TOTAL COST OF PROJECT \$212K
---	---	---

f. BRIEF DESCRIPTION OF PROJECT AND RELEVANCE TO THIS CONTRACT (include scope, size, and length of project)

HDR was selected by the Arizona Department of Administration (ADOA) to provide engineering services for the State Capital Emergency Generator Evaluations and Utility Mapping project. The project involved two tasks, described below.

TASK 1 – EMERGENCY SYSTEMS AND GENERATOR EVALUATIONS

HDR obtained comprehensive information about existing emergency systems for multiple state-owned buildings in the vicinity of the State Capital campus in Downtown Phoenix, AZ as well as one other building in Phoenix, and three buildings in Tucson, AZ. The assessment started at the generators for the particular buildings and extended inwards to the listed buildings to develop an internal system mapping. The purpose of the generator assessment(s) is to provide a current picture of the health of the building generators. This information could then be used moving forward by AZDOA personnel to determine upgrade, replacement, subtraction, or rewiring needs.



Internal mapping of the emergency systems was intended to provide a system connection diagram indicating quantity and sizing of internal emergency system equipment. AZDOA would use this information to further study any deficiencies noted at the time of the survey, as well as develop a full understanding of the types of loads being served by these existing systems. This information could once again be used to determine future projects centered around expansion, consolidation, or replacement of existing systems.

TASK 2 – UTILITY MAPPING

HDR obtained comprehensive information about existing subsurface utilities on state-owned properties in the vicinity of the State Capital campus in Downtown Phoenix, AZ. HDR worked with AZDOA staff and qualified subconsultants to perform data collection, staff interviews, site visits, on-site locating/designating, and mapping of existing utilities as identified by ADOA.



ATTACHMENT I – General Qualifications

**ANNUAL REQUEST FOR QUALIFICATIONS AND EXPERIENCE NO:
ADSP015-00004729**

**STATE PROCUREMENT OFFICE
Department of Administration
100 North 15th Avenue, Suite 201
Phoenix, Arizona 85007**

5. EXAMPLE PROJECTS WHICH BEST ILLUSTRATE PROPOSED TEAM'S QUALIFICATIONS FOR THIS CONTRACT

(Present no more than five (5) projects. Complete one Section 5 for each project.)

a. TITLE AND LOCATION <i>(City and State)</i> ADOT, Environmental On-call, Statewide, AZ	b. YEAR COMPLETED	
	PROFESSIONAL SERVICES 2002-Ongoing	CONSTRUCTION <i>(If applicable)</i> N/A

23. PROJECT OWNER'S INFORMATION

c. PROJECT OWNER Arizona Department of Transportation	d. ORIGINAL BUDGET/NTE AMOUNT OF PROJECT \$2M	e. TOTAL COST OF PROJECT \$2M (Tasks to date)
---	---	---

f. BRIEF DESCRIPTION OF PROJECT AND RELEVANCE TO THIS CONTRACT (include scope, size, and length of project)

During the past 12 years, we have completed hundreds of assignments under this contract involving a full range of environmental services to support pre-design, design, and post-design activities throughout Arizona. This includes providing environmental determinations, categorical exclusions, environmental assessments, and supporting documents for the environmental clearance of highway projects. Activities include scoping, budgeting, data inventory and analysis, and document preparation. Project components include Sections 401, 402, and 404 permits; cultural resources; protected and sensitive status plants and animals; land ownership; socioeconomic impacts; hazardous materials assessments; public outreach; and noise and air quality. Coordination is typically required with a variety of stakeholders including tribal governments, Arizona Department of Agriculture, Arizona Game and Fish Department, State Land Department, and Bureau of Land Management.





ATTACHMENT I – General Qualifications

**ANNUAL REQUEST FOR QUALIFICATIONS AND EXPERIENCE NO:
ADSP015-00004729**

**STATE PROCUREMENT OFFICE
Department of Administration
100 North 15th Avenue, Suite 201
Phoenix, Arizona 85007**

5. EXAMPLE PROJECTS WHICH BEST ILLUSTRATE PROPOSED TEAM'S QUALIFICATIONS FOR THIS CONTRACT

(Present no more than five (5) projects. Complete one Section 5 for each project.)

a. TITLE AND LOCATION <i>(City and State)</i> ADOT, On-Call District Minor Projects, Tucson and Safford Districts, AZ	b. YEAR COMPLETED	
	PROFESSIONAL SERVICES	CONSTRUCTION <i>(If applicable)</i>
	2001-Ongoing	N/A

23. PROJECT OWNER'S INFORMATION

c. PROJECT OWNER Arizona Department of Transportation	d. ORIGINAL BUDGET/NTE AMOUNT OF PROJECT \$2M	e. TOTAL COST OF PROJECT \$771K (tasks to date)
---	---	---

g. BRIEF DESCRIPTION OF PROJECT AND RELEVANCE TO THIS CONTRACT (include scope, size, and length of project)

Under multiple on-call contracts with ADOT, we have served southern Arizona, including the Tucson and Safford Districts. A list of some of tasks delivered under these contracts include:

- **US 191 Cochise Overpass**
- **I-10 General Plan**
- **Oracle Road Bike Lanes DCR**
- **Cerro Prieta Wash Drop Structure**
- **Camino de Manana**
- **SR 86, MP 105.44 Box Culvert**
- **Sierra Vista Multiuse**
- **Nogales Mariposa Port**
- **SR 286 Erosion Protection**
- **La Cholla Boulevard - Santa Cruz River**
- **SR 189/I-19**
- **SR 77 Roger Road**
- **SR 79 Oracle Junction**
- **SR 79 Box Culvert**
- **Continental TI**
- **SR 79 Box Culvert Extension**
- **SR 79, Extension of 6 Box Culverts**





ATTACHMENT I – General Qualifications

ANNUAL REQUEST FOR QUALIFICATIONS AND EXPERIENCE NO:
ADSP015-00004729

STATE PROCUREMENT OFFICE
Department of Administration
100 North 15th Avenue, Suite 201
Phoenix, Arizona 85007

5. EXAMPLE PROJECTS WHICH BEST ILLUSTRATE PROPOSED TEAM'S QUALIFICATIONS FOR THIS CONTRACT

(Present no more than five (5) projects. Complete one Section 5 for each project.)

a. TITLE AND LOCATION (City and State)	b. YEAR COMPLETED	
	PROFESSIONAL SERVICES	CONSTRUCTION (If applicable)
ADOA Managed Buildings Energy Audits - Phase 1	2014	N/A

23. PROJECT OWNER'S INFORMATION

c. PROJECT OWNER	d. ORIGINAL BUDGET/NTE AMOUNT OF PROJECT	e. TOTAL COST OF PROJECT
Arizona Department of Administration	\$54K	\$54K

h. BRIEF DESCRIPTION OF PROJECT AND RELEVANCE TO THIS CONTRACT (include scope, size, and length of project)

HDR provided energy audits for all Arizona Department of Administration (ADOA) managed facilities. The scope of work for Phase I included an update of previous investment grade energy audits completed for each of the facilities listed below:

- a. 1624 West Adams (Building #216)
- b. 1688 West Adams (Building #215)
- c. 1716 West Adams (Building #401)
- d. 1740 West Adams (Building #212)
- e. 1700 West Washington (H, M, S, T) (Buildings #404, 403, 405, 213)

The total area in this phase of the work was 672,203 square feet. HDR created new energy consumption baselines for each of the facilities and created a list of Energy Conservation Measures (ECM), complete with an estimate of costs and savings that achieve a combined simple payback of five years or less.

We worked with ADOA and the Governor's Office of Energy Policy (GOEP) to establish a measurement and verification program for the savings from each of the ECM's. A prioritization of sub-metering at a building level was also provided to allow for validation of savings. HDR coordinated any rebate programs that ADOA can benefit from directly with the vendors.



ATTACHMENT I – General Qualifications

ANNUAL REQUEST FOR QUALIFICATIONS AND EXPERIENCE NO:
ADSP015-00004729

STATE PROCUREMENT OFFICE
Department of Administration
100 North 15th Avenue, Suite 201
Phoenix, Arizona 85007

5. EXAMPLE PROJECTS WHICH BEST ILLUSTRATE PROPOSED TEAM'S QUALIFICATIONS FOR THIS CONTRACT

(Present no more than five (5) projects. Complete one Section 5 for each project.)

a. TITLE AND LOCATION (City and State)	b. YEAR COMPLETED	
	PROFESSIONAL SERVICES	CONSTRUCTION (If applicable)
Phoenix Transmission Main Inspection and Assessment	2014	N/A

23. PROJECT OWNER'S INFORMATION

c. PROJECT OWNER City of Phoenix	d. ORIGINAL BUDGET/NTE AMOUNT OF PROJECT \$3M	e. TOTAL COST OF PROJECT \$3M
-------------------------------------	--	----------------------------------

i. BRIEF DESCRIPTION OF PROJECT AND RELEVANCE TO THIS CONTRACT (include scope, size, and length of project)

The City of Phoenix has 260 miles of 42-inch or larger water transmission mains; approximately 150 miles are composed of prestressed concrete cylinder pipe (PCCP). In 2003, the city initiated a program to inspect its PCCP. The program has provided useful information for assessing, and at times rehabilitating, portions of pipe. However, high priority pipes were not assessed because of the difficulties arising from shutdowns and deployment of inspection equipment. HDR was selected to conduct assessment of the highest priority 32 miles of the city's PCCP, including 10 separate pipelines throughout the city's water transmission system.



Scheduled for completion in 2014, the project entails execution, shutdown and startup plans (partial and full); data collection through monitoring, external and internal inspection; analysis of data; and recommendations for each pipeline. HDR developed a plan for performing the condition assessment on each of the pipelines, using subconsultants for electromagnetic assessment, mortar petrographic analysis, and wire metallurgy analysis as appropriate for collecting data for determining the condition of and future recommendations for each pipeline. HDR provided electromagnetic (EMAG) survey, pipe-to-soil potential assessment, transient pressure monitoring, pipe continuity testing, internal visual/sounding inspection, soil sampling, and pipe dissection.

The city also wanted the project to yield an inspection and assessment protocol to guide its staff in continuing pipeline assessments in the future. To assist the city in this endeavor, HDR is providing the city's staff with hands-on training in shutdown/startup planning, visual/sounding inspection, pipe dissection, and transient pressure monitoring as they inspect some of the pipelines.

Project Highlights

- Condition assessment of PCCP, 42-inch diameter and larger
- Developed city's large pipe inspection and assessment program
- Provided specialty inspection services for prioritized pipes



ATTACHMENT I – General Qualifications

ANNUAL REQUEST FOR QUALIFICATIONS AND EXPERIENCE NO:
ADSP015-00004729

STATE PROCUREMENT OFFICE
Department of Administration
100 North 15th Avenue, Suite 201
Phoenix, Arizona 85007

6. ADDITIONAL INFORMATION

a. PROVIDE ANY ADDITIONAL INFORMATION YOU FEEL MAY BE NECESSARY TO DESCRIBE YOUR FIRMS QUALIFICATIONS. (ATTACH ADDITIONAL SHEETS AS NEEDED.)

Together, anything is possible.

At HDR, we believe that the way we work can add meaning and value to the world. That ideas inspire positive change. That coloring outside the lines can illuminate fresh perspectives. And that small details yield important realizations. Above all, we believe that collaboration is the best way forward.

So while we are most well-known for delivering architecture and engineering services—for adding beauty and structure to communities through high performance buildings and smart infrastructure—we provide much more than that. We create an unshakable foundation for progress because our multidisciplinary teams also include the firepower of archeologists, economists, builders, analysts, artists and scientists.



Our 8,500 employees, working in 200 locations around the world, push open the doors to what's possible each and every day. This is where great begins.

HDR has been serving Arizona clients since 1959 and we have 220 professionals working from three primary locations in the State. We are consistently ranked by Engineering News-Record among the top engineering and environmental firms and were ranked as the No. 1 Engineering Firm in the Phoenix Business Journal's 2014 Book of Lists. We are well known as an on-call architectural/engineering consulting firm in Arizona. We are currently providing services for about 30 on-call contracts for a variety of disciplines throughout the State. These on-call services are provided for federal, state, and local governmental agencies. We are very familiar with the specific needs of on-call contracts through providing similar services under multiple on-calls for Arizona agencies, including the Arizona Department of Transportation (ADOT); the cities of Tucson, Scottsdale, Mesa, Tempe, Yuma, Avondale, Goodyear, Glendale, and Phoenix; Pinal County; Pima County; Flood Control District of Maricopa County (FCDMC); and Maricopa County Department of Transportation (MCDOT), among others.

We have extensive experience with contracts that require performance of multiple, simultaneous task orders. Our assembled team will review each request, visit the site (as appropriate), review available data such as record plans and/or operations data, and develop an action plan for the work. In doing this up front, scope and technical questions can be raised, recommendations for improving the scope of work can be made, and a preliminary cost estimate can be developed. Upon receipt of Notice-to-Proceed, we will immediately initiate the work effort. We recognize that the successful delivery of multi-disciplinary projects demand close coordination and communication between you and the task order team.

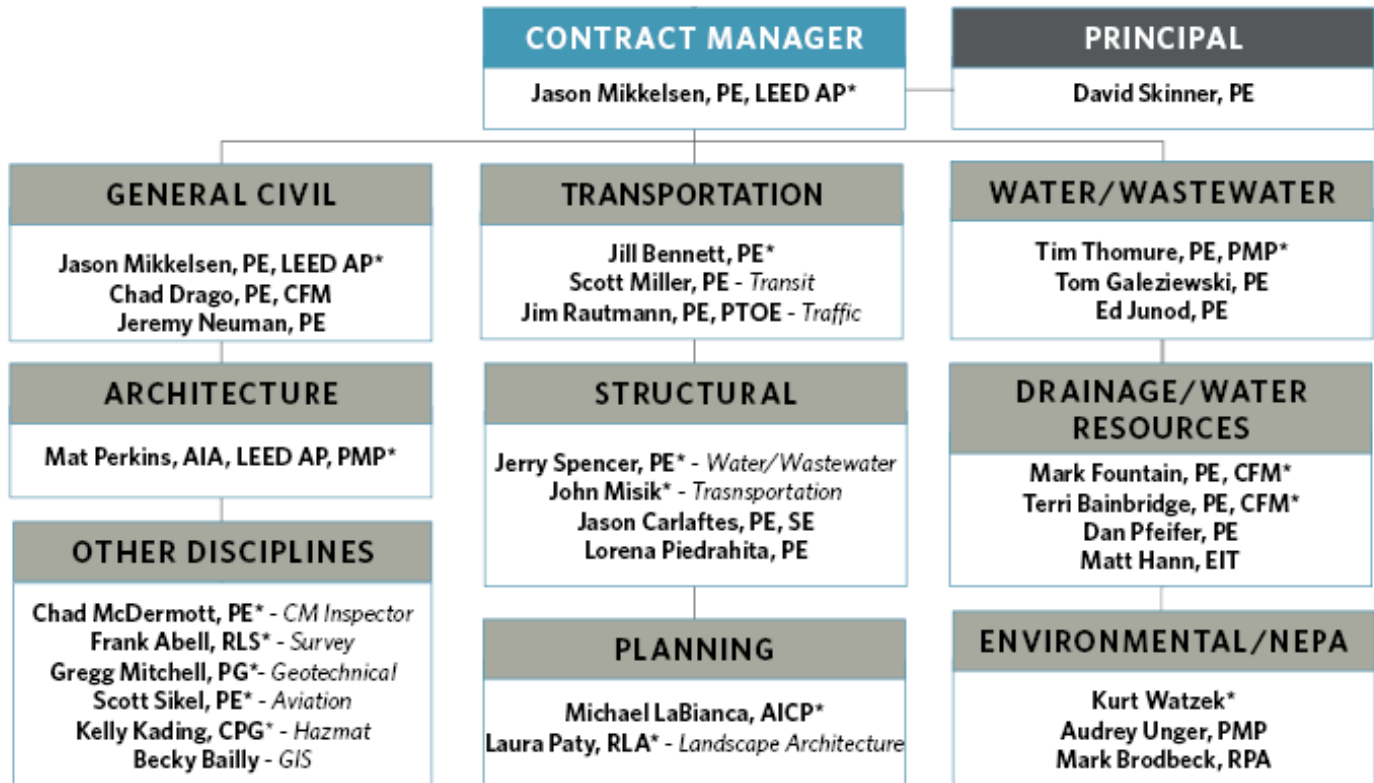
Our greatest asset is our people. For this contract, we have customized a team to leverage the knowledge and experience of our technical resources to effectively meet your goals. Most of our team members have a long history with our organization, creating a stable leadership core to guide long-term strategies and daily operations. We also have tremendous global resources available to assist local staff, as requested, to meet your needs.



ATTACHMENT I – General Qualifications
ANNUAL REQUEST FOR QUALIFICATIONS AND EXPERIENCE NO:
ADSP015-00004729

STATE PROCUREMENT OFFICE
 Department of Administration
 100 North 15th Avenue, Suite 201
 Phoenix, Arizona 85007

Our depth of staff enables us to meet the wide range of possible technical and schedule requirements. We look carefully at our existing project commitments as we develop our team organization to ensure that the personnel selected for each project will be available to proceed without delay. HDR has a proven and effective project controls system that assists each project manager in being proactive with regard to communications, schedule, budget, and quality control.



*Key Staff - Resume Provided in Section 4

7. ANNUAL AVERAGE PROFESSIONAL SERVICES REVENUES OF FIRM FOR LAST 3 YEARS

a.	Percentage of Total Work Attributable to State, Federal and Municipal Government Work:	70%
b.	Percentage of Total Work Attributable to Non-Government Work:	30%

8. AUTHORIZED REPRESENTATIVE. The foregoing is a statement of facts.

Signature: Date: December 30, 2014
 Name: David Skinner, PE Title: Vice President/Area Operations Manager