



ATTACHMENT I – General Qualifications
**ANNUAL REQUEST FOR QUALIFICATIONS AND EXPERIENCE NO:
ADSP015-00004729**

STATE PROCUREMENT OFFICE
Department of Administration
100 North 15th Avenue, Suite 201
Phoenix, Arizona 85007

(If a firm has branch offices, complete for each specific branch office seeking work.)

1. **Annual Request for Qualifications**

a. FIRM (OR BRANCH OFFICE) NAME:	KPFF Consulting Engineers
b. FIRM (OR BRANCH OFFICE) STREET:	2800 N Central Avenue, Suite 1010
c. FIRM (OR BRANCH OFFICE) CITY:	Phoenix
d. FIRM (OR BRANCH OFFICE) STATE:	AZ
e. FIRM (OR BRANCH OFFICE) ZIP CODE:	85004
f. YEAR ESTABLISHED:	1960 as Al Kelly & Associates / 1976 as KPFF
(g1). OWNERSHIP - TYPE:	Corporation
(g2). OWNERSHIP - SMALL BUSINESS STATUS:	None
h. POINT OF CONTACT NAME AND TITLE:	Timothy S. Sepper, PE, SE
i. POINT OF CONTACT TELEPHONE NUMBER:	602-264-1010
j. POINT OF CONTACT E-MAIL ADDRESS:	timothy.sepper@kpff.com or karen.ratliff@kpff.com
k. NAME OF FIRM (If block 1a is a branch office):	KPFF Inc.



ATTACHMENT I – General Qualifications
ANNUAL REQUEST FOR QUALIFICATIONS AND EXPERIENCE NO:
ADSP015-00004729

STATE PROCUREMENT OFFICE
Department of Administration
100 North 15th Avenue, Suite 201
Phoenix, Arizona 85007

2. EMPLOYEES BY DISCIPLINE

a. Discipline Title	b. Function: Primary (P) or Secondary (S)	c. No. of Employees - Firm	d. No. of Employees - Branch
Administrative	P	125	3
CADD Technician	P	129	1
CADD Technician	S		6
Civil Engineer	P	190	
Construction Inspector	P	6	
Construction Inspector	S		5
Construction Manager	P	2	
Mechanical Engineer	P	5	
Mining Engineer	P	1	
Project Manager	P	6	
Structural Engineer	P	375	12
Transportation Engineer	P	27	
Other	P	17	
Total		883	27



ATTACHMENT I – General Qualifications
ANNUAL REQUEST FOR QUALIFICATIONS AND EXPERIENCE NO:
ADSP015-00004729

STATE PROCUREMENT OFFICE
Department of Administration
100 North 15th Avenue, Suite 201
Phoenix, Arizona 85007

3. PROFILE OF FIRM'S EXPERIENCE AND ANNUAL AVERAGE REVENUE FOR LAST YEAR

a. Approximate No. of Projects	b. Experience	c. Revenue Index Number (see below)
29	Airports; Terminals and Hangars; Freight Handling	4
1	Bridges	1
5	Commercial Buildings (Low Rise); Shopping Centers	1
28	Educational Facilities; Classrooms	4
7	Garages; Vehicle Maintenance Facilities; Parking	2
3	Hospital and Medical Facilities	1
7	Hotels; Motels	1
11	Housing (Residential, Multi-Family; Apartments; Condominiums)	1
2	Industrial Buildings; Manufacturing Plants	1
7	Prisons & Correctional Facilities	1
7	Recreation Facilities (Parks, Marinas, Etc)	1
2	Rehabilitation (Bldgs; Structural)	1
9	Structural Design; Special Structures	1
4	Towers (Self Supporting & Guyed)	1
7	Utilities (Gas & Steam)	2
10	Warehouses & Depots	2

PROFESSIONAL SERVICES REVENUE INDEX NUMBER

- | | |
|---|---|
| 1. Less than \$100,000 | 6. \$2 million to less than \$5 million |
| 2. \$100,000 to less than \$250,000 | 7. \$5 million to less than \$10 million |
| 3. \$250,000 to less than \$500,000 | 8. \$10 million to less than \$25 million |
| 4. \$500,000 to less than \$1 million | 9. \$25 million to less than \$50 million |
| 5. \$1 million to less than \$2 million | 10. \$50 million or greater |



ATTACHMENT I – General Qualifications
ANNUAL REQUEST FOR QUALIFICATIONS AND EXPERIENCE NO:
ADSP015-00004729

STATE PROCUREMENT OFFICE
Department of Administration
100 North 15th Avenue, Suite 201
Phoenix, Arizona 85007

4. Resumes of Key Personnel Proposed for this Contract (Complete one Section 4 for each key person.)

a. NAME Timothy S. Sepper, PE, SE	b. ROLE IN THIS CONTRACT Project Principal, Structural Engineering	c. YEARS EXPERIENCE	
		1. TOTAL 30	2. WITH CURRENT FIRM 30
d. LOCATION (City and State) KPFF Consulting Engineers, Phoenix, AZ			
e. EDUCATION (DEGREE AND SPECIALIZATION) M.S., Civil Engineering, University of Illinois, 1984 B.S., Civil Engineering, University of Illinois, 1982		f. PROFESSIONAL TRAINING - REGISTRATIONS AZ, CA, NV, IL / Professional Structural Engineer CA, NV / Professional Engineer (Civil)	

g. OTHER PROFESSIONAL QUALIFICATIONS (Organizations, Awards, etc.)

Society of American Military Engineers, Structural Engineers Association of Arizona, ACEC, AISC

H. RELEVANT PROJECTS

	(1) TITLE AND LOCATION (City and State)	(2) YEAR COMPLETED	
		Professional Services	Construction (if applicable)
1.	Bridge Plan Review for Eastmark Bella Via Phase 1B, Signal Butte Road, South of Ray Road, over Powerline Floodway, Mesa, AZ	2014	
	(3) BRIEF DESCRIPTION (Brief scope, size, cost, etc.) AND SPECIFIC ROLE Provided structural engineering plan review of bridge drawings and calculations, coordination meeting with City of Mesa, and second plan review of submitted documents. All comments were supplied back to the City in a digital PDF format. Served as project principal and reviewer.	<input checked="" type="checkbox"/>	Check if project performed with current firm
2.	ADOC Eyman Prison Complex, Rynning Unit Condition Assessment and Design of Repair, Florence, AZ	2014	2014
	(3) BRIEF DESCRIPTION (Brief scope, size, cost, etc.) AND SPECIFIC ROLE Served as project principal for the investigation and subsequent design for repair of Cellblocks 3,4,5,6, & 7at the Rynning Unit with a primary goal of reviewing the area in the mechanical room and the water soaked reinforced block wall. The project scope included the investigative phase with remedial options, design and construction phase services.	<input checked="" type="checkbox"/>	Check if project performed with current firm
3.	Territory Square Library and Recreation Center, Florence, AZ	2014	
	(3) BRIEF DESCRIPTION (Brief scope, size, cost, etc.) AND SPECIFIC ROLE Serving as project principal and project manager responsible for structural engineering services for a central single-story, 30,000-sf library/offices building; a single-story, 7,000-sf bathhouse to the west in the pool / recreation area; and a single -story, 1,500-sf pumphouse also within the pool / recreation area.	<input checked="" type="checkbox"/>	Check if project performed with current firm
4.	City of Chandler Police Department Master Plan, Chandler, AZ	2014	
	(3) BRIEF DESCRIPTION (Brief scope, size, cost, etc.) AND SPECIFIC ROLE The scope of service for the project is to determine the immediate and long term police department facility needs and to develop a comprehensive Police Department Master Plan that will address the efficient use of existing public safety facilities and also identity appropriate planning of future facilities. Reviewed the proposed master plan to provide input on future facilities structural engineering systems. Served as project principal and project manager.	<input checked="" type="checkbox"/>	Check if project performed with current firm



ATTACHMENT I – General Qualifications

ANNUAL REQUEST FOR QUALIFICATIONS AND EXPERIENCE NO:
ADSP015-00004729

STATE PROCUREMENT OFFICE
Department of Administration
100 North 15th Avenue, Suite 201
Phoenix, Arizona 85007

	(1) TITLE AND LOCATION (<i>City and State</i>)	(2) YEAR COMPLETED	
	Phoenix Mesa Gateway West Terminal Expansion, Mesa, AZ	Professional Services 2014	Construction (if applicable) 2014
5.	(3) BRIEF DESCRIPTION (<i>Brief scope, size, cost, etc.</i>) AND SPECIFIC ROLE The expansion was designed and built in three phases. The scope of work consisted of 61,000-sf of new construction and 42,000-sf of renovation to the existing facilities. Served as project principal responsible for structural framing options, quality assurance/quality control and sealing of construction documents.	<input checked="" type="checkbox"/>	Check if project performed with current firm



ATTACHMENT I – General Qualifications
ANNUAL REQUEST FOR QUALIFICATIONS AND EXPERIENCE NO:
ADSP015-00004729

STATE PROCUREMENT OFFICE
Department of Administration
100 North 15th Avenue, Suite 201
Phoenix, Arizona 85007

4. Resumes of Key Personnel Proposed for this Contract (Complete one Section 4 for each key person.)

a. NAME Michael S. Puhlmann, PE, SE	b. ROLE IN THIS CONTRACT Project Manager, Structural Engineering	c. YEARS EXPERIENCE	
		1. TOTAL 31	2. WITH CURRENT FIRM 31
d. LOCATION (City and State) KPF Consulting Engineers, Phoenix, AZ			
e. EDUCATION (DEGREE AND SPECIALIZATION) B.S., Civil Engineering, Brigham Young University, 1983		f. PROFESSIONAL TRAINING - REGISTRATIONS AZ / Professional Structural Engineer	
g. OTHER PROFESSIONAL QUALIFICATIONS (Organizations, Awards, etc.) Structural Engineers Association of Arizona, ACEC, ASCE			

H. RELEVANT PROJECTS

	(1) TITLE AND LOCATION (City and State)	(2) YEAR COMPLETED	
		Professional Services	Construction (if applicable)
1.	ADOT Delcer Storage Facilities, Various Locations in Northern & Eastern AZ	2014	2014
	(3) BRIEF DESCRIPTION (Brief scope, size, cost, etc.) AND SPECIFIC ROLE The scope of work is to update existing construction documents to current codes for Delcer storage facilities with a membrane roof, assist ADOT in the bidding process, and provide construction administration at the following locations: Alpine, Fort Rock, Payson, Oak Creek, and Safford.		
2.	ADOC Eyman Prison Complex, Rynning Unit Design of Repair, Florence, AZ	2014	2014
	(3) BRIEF DESCRIPTION (Brief scope, size, cost, etc.) AND SPECIFIC ROLE Served as project manager for the design of the repair of deteriorated and spalling above grade concrete slab in Cellblocks 3,4,5,6, & 7 involving the application of carbon fiber to strengthen the structure.		
3.	ADOT Truck Wash Facilities, Various Locations Within AZ	2014	2015
	(3) BRIEF DESCRIPTION (Brief scope, size, cost, etc.) AND SPECIFIC ROLE Serving as project manager/project engineer responsible for structural engineering design on various truck wash facilities. The building consists of 20' X 60' metal building with a spreader rack and catwalk inside.		
4.	ADOT Mag Chloride Tank Containment Basin	2014	2015
	(3) BRIEF DESCRIPTION (Brief scope, size, cost, etc.) AND SPECIFIC ROLE Serving as project manager/project engineer responsible for structural engineering design of steel canopy at new a new basin as well as at the existing basin. The canopies consist of steel roof with four columns.		
5.	City of Phoenix, Convention Center East Parking Garage Assessment, Phoenix, AZ	2013	
	(3) BRIEF DESCRIPTION (Brief scope, size, cost, etc.) AND SPECIFIC ROLE		



ATTACHMENT I – General Qualifications

ANNUAL REQUEST FOR QUALIFICATIONS AND EXPERIENCE NO:
ADSP015-00004729

STATE PROCUREMENT OFFICE
Department of Administration
100 North 15th Avenue, Suite 201
Phoenix, Arizona 85007

(3) BRIEF DESCRIPTION (*Brief scope, size, cost, etc.*) AND SPECIFIC ROLE

Check if project performed with current firm

Served as project manager. The project entailed the general assessment on the condition of the City of Phoenix East Parking Structure. The assessment is to be used by The City for budgeting purposes for 5 and 10 years out. KPFF served as the prime consultant responsible for project meetings, project management, and all document preparation and review thereof. In addition, KPFF provided structural engineering services consisting of assess of expansion joints, assess stairs and cladding, assess damaged masonry walls and spalling concrete, and assess large exterior signage.



ATTACHMENT I – General Qualifications
ANNUAL REQUEST FOR QUALIFICATIONS AND EXPERIENCE NO:
ADSP015-00004729

STATE PROCUREMENT OFFICE
Department of Administration
100 North 15th Avenue, Suite 201
Phoenix, Arizona 85007

4. Resumes of Key Personnel Proposed for this Contract (Complete one Section 4 for each key person.)

a. NAME Andrew S. Coffey, PE	b. ROLE IN THIS CONTRACT Project Manager, Structural Engineering	c. YEARS EXPERIENCE	
		1. TOTAL 17	2. WITH CURRENT FIRM 9
d. LOCATION (City and State) KPF Consulting Engineers, Phoenix, AZ			
e. EDUCATION (DEGREE AND SPECIALIZATION) M.S., Civil Engineering, New Mexico State University, 1998		f. PROFESSIONAL TRAINING - REGISTRATIONS CA / Civil Engineer	
g. OTHER PROFESSIONAL QUALIFICATIONS (Organizations, Awards, etc.) Structural Engineers Association of Arizona, Arizona Consulting Engineers Association			

H. RELEVANT PROJECTS

	(1) TITLE AND LOCATION (City and State)	(2) YEAR COMPLETED	
		Professional Services	Construction (if applicable)
1.	ADOC Eyman Prison Complex, Rynning Unit Condition Assessment and Design of Repair, Florence, AZ	2014	2014
	(3) BRIEF DESCRIPTION (Brief scope, size, cost, etc.) AND SPECIFIC ROLE Served as project manager for the investigation and subsequent design of repair of Cellblocks 3,4,5,6, & 7at the Rynning Unit with a primary goal of reviewing the area in the mechanical room and the water soaked reinforced block wall. The project scope included the investigative phase with remedial options, design and construction phase services.		
2.	Chandler Gilbert Community College, Coyote Center, Chandler, AZ	2014	2014
	(3) BRIEF DESCRIPTION (Brief scope, size, cost, etc.) AND SPECIFIC ROLE Project manager responsible for structural engineering services related to the development of this 74,000-sf student center including basketball gymnasium with 1,100 retractable seats, fitness/training rooms, weight room, locker rooms, enrollment services, student services, and associated offices, educational space, and entrance lobbies.		
3.	Flagstaff Medical Center Parking Garage, Structural Assessment and Repair, Flagstaff, AZ	2014	
	(3) BRIEF DESCRIPTION (Brief scope, size, cost, etc.) AND SPECIFIC ROLE Served as project manager responsible for structural engineering services for this four-story, 45,500-sf concrete parking structure which is showing signs of distress. The scope of services consisted of preliminary condition assessment, comprehensive condition assessment, and structural design of repair.		
4.	Holly Frontier Asphalt Pipe Supports, Peoria, AZ	2013	2013
	(3) BRIEF DESCRIPTION (Brief scope, size, cost, etc.) AND SPECIFIC ROLE Served as project manager responsible for structural engineering and construction phase services for pipe stands, new box culvert / vault, elevated pipe bridge and foundations at road crossing, truss design for intermediate pipe supports, and thermal expansion analysis and anchor location determination.		
5.		(2) YEAR COMPLETED	



ATTACHMENT I – General Qualifications

ANNUAL REQUEST FOR QUALIFICATIONS AND EXPERIENCE NO:
ADSPO15-00004729

STATE PROCUREMENT OFFICE
Department of Administration
100 North 15th Avenue, Suite 201
Phoenix, Arizona 85007

(1) TITLE AND LOCATION (<i>City and State</i>)	Professional Services	Construction (if applicable)
Holly Frontier Asphalt Tank and Equipment Anchorage, Peoria, AZ	2013	2013
(3) BRIEF DESCRIPTION (<i>Brief scope, size, cost, etc.</i>) AND SPECIFIC ROLE <input checked="" type="checkbox"/> Check if project performed with current firm		
Served as project manager responsible for structural engineering and construction phase services for foundation design and equipment anchorage for several tanks and heavy equipment.		



ATTACHMENT I – General Qualifications
ANNUAL REQUEST FOR QUALIFICATIONS AND EXPERIENCE NO:
ADSP015-00004729

STATE PROCUREMENT OFFICE
Department of Administration
100 North 15th Avenue, Suite 201
Phoenix, Arizona 85007

5. EXAMPLE PROJECTS WHICH BEST ILLUSTRATE PROPOSED TEAM'S QUALIFICATIONS FOR THIS CONTRACT

(Present no more than five (5) projects. Complete one Section 5 for each project.)

a. TITLE AND LOCATION <i>(City and State)</i> ADOC Eyman Prison Complex, Rynning Unit Condition Assessment and Design of Repair, Florence, AZ	b. YEAR COMPLETED	
	PROFESSIONAL SERVICES 6/2014	CONSTRUCTION <i>(If applicable)</i> 6/2014

23. PROJECT OWNER'S INFORMATION

c. PROJECT OWNER Arizona Department of Corrections Tony Zelenak, Lead Project Manager, (602) 364-4294 o), (602) 525-7101 c), tzelena@azcorrections.gov	d. ORIGINAL BUDGET/NTE AMOUNT OF PROJECT \$247,000	e. TOTAL COST OF PROJECT \$276,000 (change order due to unforeseen conditions)
---	---	---

f. BRIEF DESCRIPTION OF PROJECT AND RELEVANCE TO THIS CONTRACT (include scope, size, and length of project)

The project consisted of the review of the entire structure of Cellblocks 3,4,5,6, & 7at the Rynning Unit with a primary goal of reviewing the area in the mechanical room and the water soaked reinforced block wall. The project scope included the investigative phase to determine the cause(s) of the problem with remedial options. Followed by design phase which included traditional repair methods in addition to the application of carbon fiber material to strengthen the above grade concrete slab.



Spalling and deteriorated concrete slab

05/15/2013



Removal of deteriorated concrete

04/25/2014



Epoxy applied over exposed rebar

05/02/2014



After application of Carbon Fiber Material

06/25/2014



ATTACHMENT I – General Qualifications
ANNUAL REQUEST FOR QUALIFICATIONS AND EXPERIENCE NO:
ADSP015-00004729

STATE PROCUREMENT OFFICE
Department of Administration
100 North 15th Avenue, Suite 201
Phoenix, Arizona 85007

5. EXAMPLE PROJECTS WHICH BEST ILLUSTRATE PROPOSED TEAM'S QUALIFICATIONS FOR THIS CONTRACT

(Present no more than five (5) projects. Complete one Section 5 for each project.)

TITLE AND LOCATION <i>(City and State)</i> ADOT Delcer Storage Facilities, Various Locations in Northern & Eastern AZ	b. YEAR COMPLETED	
	PROFESSIONAL SERVICES 12/2014	CONSTRUCTION <i>(If applicable)</i> 12/2014

23. PROJECT OWNER'S INFORMATION

c. PROJECT OWNER ADOT; Mr. Giovanni Nabavi, ITD Facilities Planner, (602) 712-7486; gnabavi@azdot.gov	d. ORIGINAL BUDGET/NTE AMOUNT OF PROJECT \$67,935 (kpff fee)	e. TOTAL COST OF PROJECT \$2.1 M
--	---	-------------------------------------

f. BRIEF DESCRIPTION OF PROJECT AND RELEVANCE TO THIS CONTRACT (include scope, size, and length of project)

The scope of work is to update existing construction documents to current codes for Delcer storage facilities with a membrane roof, assist ADOT in the bidding process, and provide construction administration at the following locations: Alpine, Fort Rock, Payson, Oak Creek, and Safford.



Oak Creek



Oak Creek



Alpine



Alpine



ATTACHMENT I – General Qualifications
ANNUAL REQUEST FOR QUALIFICATIONS AND EXPERIENCE NO:
ADSP015-00004729

STATE PROCUREMENT OFFICE
Department of Administration
100 North 15th Avenue, Suite 201
Phoenix, Arizona 85007

5. EXAMPLE PROJECTS WHICH BEST ILLUSTRATE PROPOSED TEAM'S QUALIFICATIONS FOR THIS CONTRACT

(Present no more than five (5) projects. Complete one Section 5 for each project.)

TITLE AND LOCATION <i>(City and State)</i> ADOT Truck Wash Facilities, Various Locations Within AZ	b. YEAR COMPLETED	
	PROFESSIONAL SERVICES 2015 (est)	CONSTRUCTION <i>(If applicable)</i> 2015 (est)

23. PROJECT OWNER'S INFORMATION

c. PROJECT OWNER ADOT; Mr. Giovanni Nabavi, ITD Facilities Planner, (602) 712-7486; gnabavi@azdot.gov	d. ORIGINAL BUDGET/NTE AMOUNT OF PROJECT \$42,400 (kpf fee)	e. TOTAL COST OF PROJECT \$1.8 M
--	--	-------------------------------------

f. BRIEF DESCRIPTION OF PROJECT AND RELEVANCE TO THIS CONTRACT (include scope, size, and length of project)

KPFF provided structural engineering services for the design of various truck wash facilities within Arizona. The structure consists of 1,200-sf metal building with a spreader rack and catwalk within the interior.



Springerville (Construction 11/2014)



ATTACHMENT I – General Qualifications
ANNUAL REQUEST FOR QUALIFICATIONS AND EXPERIENCE NO:
ADSP015-00004729

STATE PROCUREMENT OFFICE
Department of Administration
100 North 15th Avenue, Suite 201
Phoenix, Arizona 85007

5. EXAMPLE PROJECTS WHICH BEST ILLUSTRATE PROPOSED TEAM'S QUALIFICATIONS FOR THIS CONTRACT

(Present no more than five (5) projects. Complete one Section 5 for each project.)

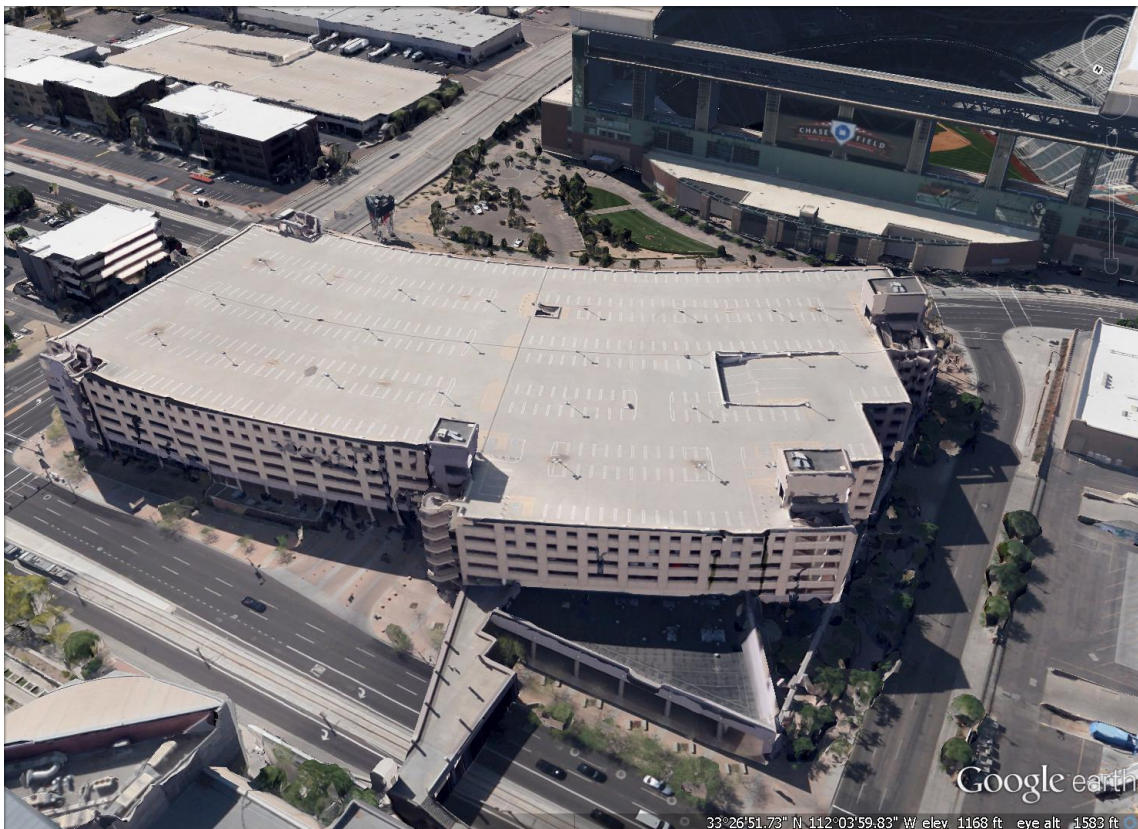
TITLE AND LOCATION <i>(City and State)</i> City of Phoenix, Convention Center East Parking Garage Assessment	b. YEAR COMPLETED	
	PROFESSIONAL SERVICES 5/2013	CONSTRUCTION <i>(If applicable)</i>

23. PROJECT OWNER'S INFORMATION

c. PROJECT OWNER City of Phoenix, Phoenix Convention Center & Venues; Michael Montgomery, Project Manager, 602-534-8439; michael.montgomery@phoenix.gov	d. ORIGINAL BUDGET/NTE AMOUNT OF PROJECT \$52,667 (kpff fee)	e. TOTAL COST OF PROJECT \$52,667 (kpff fee)
--	---	---

f. BRIEF DESCRIPTION OF PROJECT AND RELEVANCE TO THIS CONTRACT (include scope, size, and length of project)

The project entails the general facilities assessment on the condition of the City of Phoenix East Parking Structure. The assessment is used by The City for budgeting purposes for years to come. KPFF served as the prime consultant responsible for project meetings, project management, and all document preparation and review thereof. In addition, KPFF provided structural engineering services consisting of assess of expansion joints, assess stairs and cladding, assess damaged masonry walls and spalling concrete, and assess large exterior signage.





ATTACHMENT I – General Qualifications
ANNUAL REQUEST FOR QUALIFICATIONS AND EXPERIENCE NO:
ADSP015-00004729

STATE PROCUREMENT OFFICE
Department of Administration
100 North 15th Avenue, Suite 201
Phoenix, Arizona 85007

5. EXAMPLE PROJECTS WHICH BEST ILLUSTRATE PROPOSED TEAM'S QUALIFICATIONS FOR THIS CONTRACT

(Present no more than five (5) projects. Complete one Section 5 for each project.)

TITLE AND LOCATION <i>(City and State)</i> Flagstaff Medical Center Parking Garage, Structural Assessment and Design of Repair, Flagstaff, AZ	b. YEAR COMPLETED	
	PROFESSIONAL SERVICES 12/2014	CONSTRUCTION <i>(If applicable)</i>

23. PROJECT OWNER'S INFORMATION

c. PROJECT OWNER Flagstaff Medical Center, Flagstaff, AZ Aaron Kotzin, Dir of Facilities Services Aaron.kotzin@nahealth.com	d. ORIGINAL BUDGET/NTE AMOUNT OF PROJECT \$16,000 (kpff fee – hourly basis)	e. TOTAL COST OF PROJECT \$300,000 (est)
--	--	---

f. BRIEF DESCRIPTION OF PROJECT AND RELEVANCE TO THIS CONTRACT (include scope, size, and length of project)

KPFF provided structural engineering services for this four-story, 45,500-sf concrete parking structure which is showing signs of distress. The scope of services consisted of preliminary condition assessment, comprehensive condition assessment, and structural design of repair. The repairs are designed to accommodate the owner's schedule and budget in order for the work to be completed with minimal disruption to the garage users while the is being performed.





ATTACHMENT I – General Qualifications

ANNUAL REQUEST FOR QUALIFICATIONS AND EXPERIENCE NO:
ADSP015-00004729

STATE PROCUREMENT OFFICE
Department of Administration
100 North 15th Avenue, Suite 201
Phoenix, Arizona 85007

6. ADDITIONAL INFORMATION

a. PROVIDE ANY ADDITIONAL INFORMATION YOU FEEL MAY BE NECESSARY TO DESCRIBE YOUR FIRMS QUALIFICATIONS. (ATTACH ADDITIONAL SHEETS AS NEEDED.)

Founded in 1960, KPFF has provided consulting engineering services for structural, civil, composite, transportation, and municipal engineering; planning services for various government agencies and private enterprises. The company is a national firm with over 20 offices across the United States, with each office independently managed to better reflect the needs of the community it serves.

KPFF has maintained stability throughout the years because of our strong reputation for producing quality services with an experienced engineering staff. This strength has enabled us to maintain a list of repeat clientele who provide the company with 80% of our workload. KPFF’s approach is based upon a thorough understanding of our clients’ needs, application of the best available design and materials technology, understanding of construction processes and costs, and a sincere desire to produce the best quality production on time and within budget.


Since the early 1960s, has and continues to provide structural engineering services for the design of a wide variety of facilities for the Arizona Department of Administration and the State of Arizona. Projects include expansion and new construction of office buildings, pedestrian bridges, laboratories, courthouses, warehouses, maintenance facilities, prisons, health facilities, and parking garages. In addition to applied dead, live, thermal, wind, and seismic loadings, many of these structures are designed to accommodate special vibration isolation requirements, interstitial space, access flooring, and hazardous material storage. Design characteristics of these facilities include high mass, ideal damping, increased floor stiffness, and vibration isolation techniques to control the vibration as it pertains to human occupant sensitivity. The structural systems include stiff concrete and steel framed floor structures combined with isolation of mechanical systems from the supporting structure. KPFF has designed projects where these characteristics were incorporated into the design including the Polly Rosenbaum Archives Building, State Supreme Court Building, the Department of Economic Security Office Building, the Department of Revenue Office Building and Parking Garage, and the West Wing Addition to the State Capitol. In addition, other municipal/office facilities include the Maricopa County Administration Office Tower, Maricopa County Forensic Science Center, Maricopa County Design-Build Clerk of Superior Court and Parking, Glendale Western Area Public Safety Facility, Chandler Police and Courts Complex, and the ASU Interdisciplinary Science and Technology Building 1 (LEED™ Gold).

Sustainable Design - KPFF understands the importance of helping to create and support a sustainable future through environmentally conscious building practices. Our clients are aware of the importance of stewardship for the earth, and that development of the project is considerate of the environment and natural resources. Our work is based on the understanding that our role as design professionals has both a tangible and intangible impact upon the environment. From knowing how different structural systems effect natural ventilation to augmenting our specifications to incorporate recycled and renewable materials, we are continuously looking to increase our impact. KPFF has designed LEED™ rated facilities for silver, gold, and platinum. Furthermore, with several LEED™ Accredited Professionals in our organization, KPFF actively stays abreast of market trends and demands.

7. ANNUAL AVERAGE PROFESSIONAL SERVICES REVENUES OF FIRM FOR LAST 3 YEARS

a. Percentage of Total Work Attributable to State, Federal and Municipal Government Work:	60%
b. Percentage of Total Work Attributable to Non-Government Work:	40%

8. AUTHORIZED REPRESENTATIVE. The foregoing is a statement of facts.

Signature:  Date: 12-19-2014

Name: Timothy S. Sepper, PE, SE Title: Principal



CORPORATE ORGANIZATION

June 2014

SHAREHOLDERS

- | | | | |
|--------------|---------------|-------------|-----------------|
| J. Abdie | T. Gsell | M. Moravec | D. Schwartz |
| D. Allwardt | R. Hartman | B. Moyes | A. Scott |
| J. Asher | I. Hasayen | S. Murray | L. Scott |
| P. Behnam | T. Heiman | D. Oates | D. Seman |
| J. Black | M. Hershberg | C. Olson | T. Sepper |
| N. Charlton | R. Hodali | A. Orue | M. Steepy |
| M. Chase | N. Ingraffea | B. Patsy | J. Stewart |
| R. Davis | A. Johnson | M. Press | L. Swan |
| S. Dill | R. Johnson | B. Raji | B. Thorpe |
| B. Dilsworth | S. Kingsley | A. Reynolds | C. Totten |
| M. Dolan | E. Lehmkuhl | R. Rezaian | C. Vanderzanden |
| M. Dygean | R. Leimkuhler | J. Richards | G. Varney |
| R. Fecarotta | D. McMullen | R. Riley | M. Veldee |
| G. Gaafar | J. Miller | S. Roberts | N. Watson |
| J. Gavan | F. Mohseni | M. Schmid | R. Young |
| J. Gavazza | A. Monnier | | |

OFFICERS

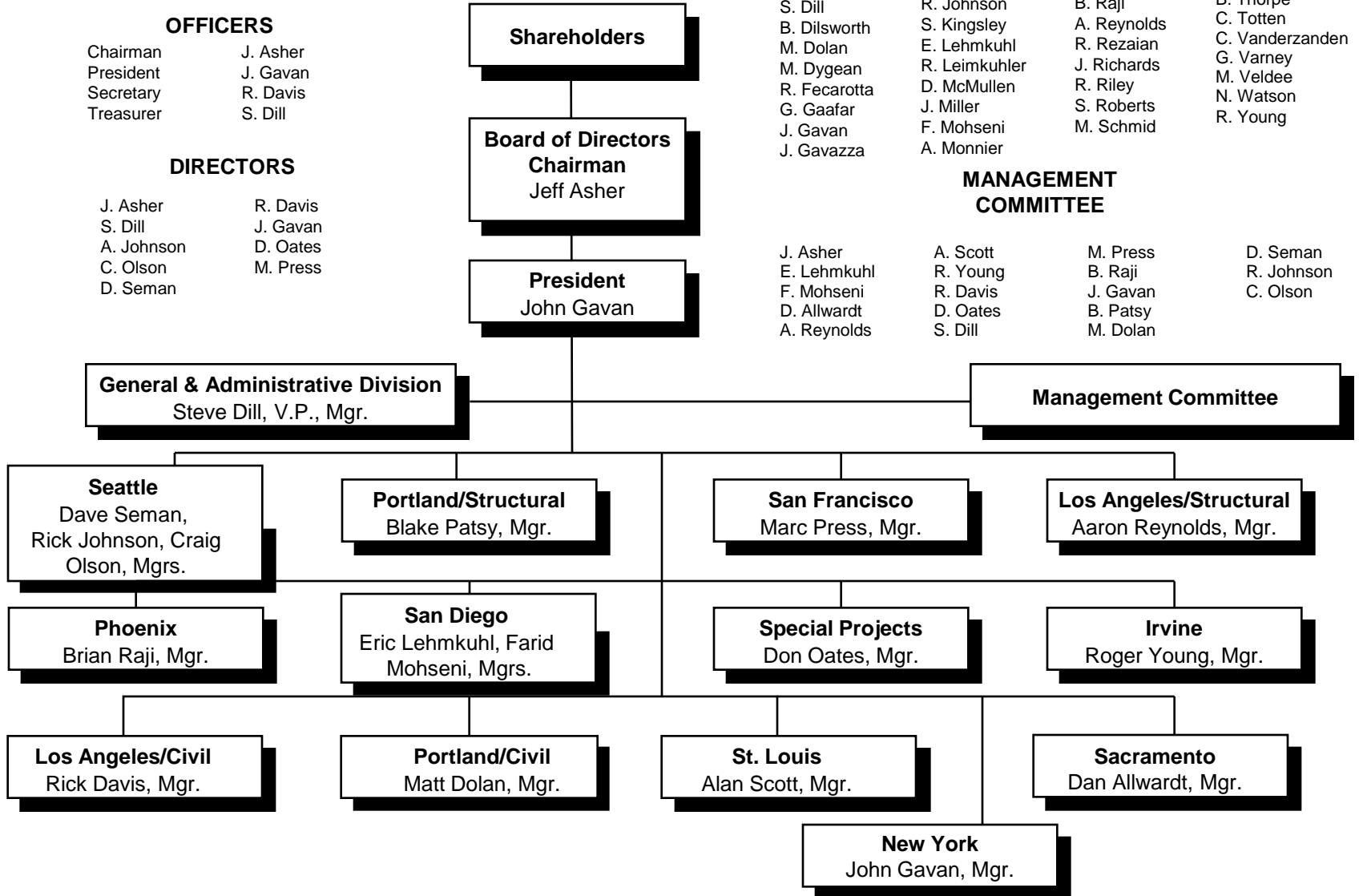
- | | |
|-----------|----------|
| Chairman | J. Asher |
| President | J. Gavan |
| Secretary | R. Davis |
| Treasurer | S. Dill |

DIRECTORS

- | | |
|------------|----------|
| J. Asher | R. Davis |
| S. Dill | J. Gavan |
| A. Johnson | D. Oates |
| C. Olson | M. Press |
| D. Seman | |

MANAGEMENT COMMITTEE

- | | | | |
|-------------|----------|----------|------------|
| J. Asher | A. Scott | M. Press | D. Seman |
| E. Lehmkuhl | R. Young | B. Raji | R. Johnson |
| F. Mohseni | R. Davis | J. Gavan | C. Olson |
| D. Allwardt | D. Oates | B. Patsy | |
| A. Reynolds | S. Dill | M. Dolan | |



**PHOENIX
DECEMBER 2014**

